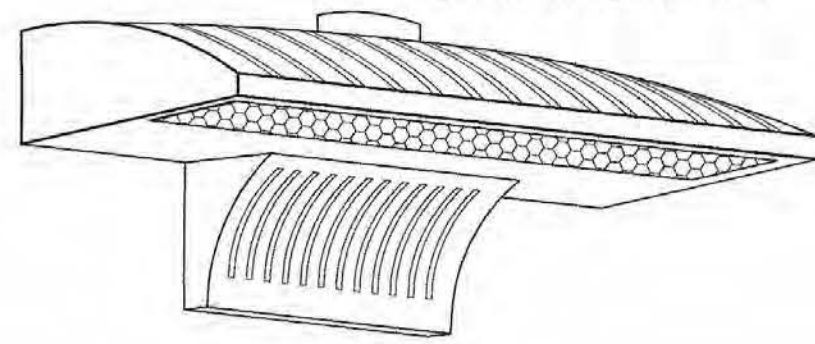


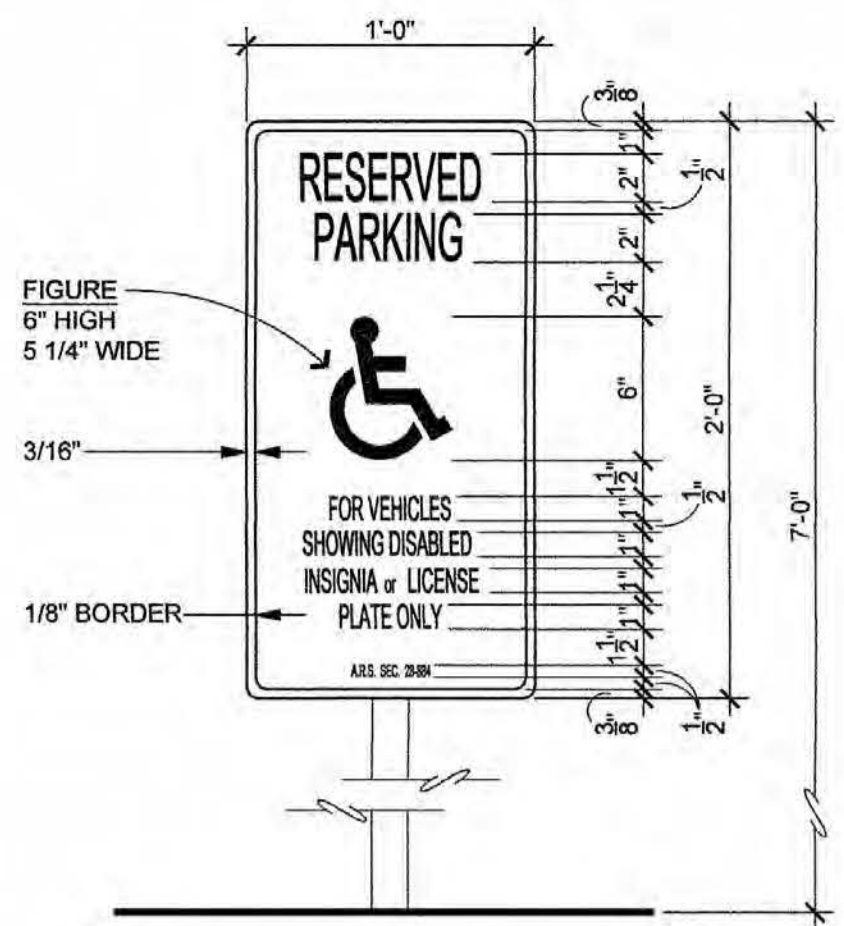
**D-Series Size 2
LED WALL LUMINAIRE**



E LIGHT FIXTURE
SCALE: NONE

NOTE: SEE ELECTRICAL AND CUT SHEET DRAWINGS FOR SPECIFIC FIXTURES AND HEIGHTS. 25'-0" MAXIMUM HT. EXCEPTION: WHERE WITHIN 150 LF OF RESIDENTIAL ZONING, 15'-0" MAXIMUM HT. PROVIDE MAXIMUM 1 FOOT CANDLE AT PROPERTY LINE

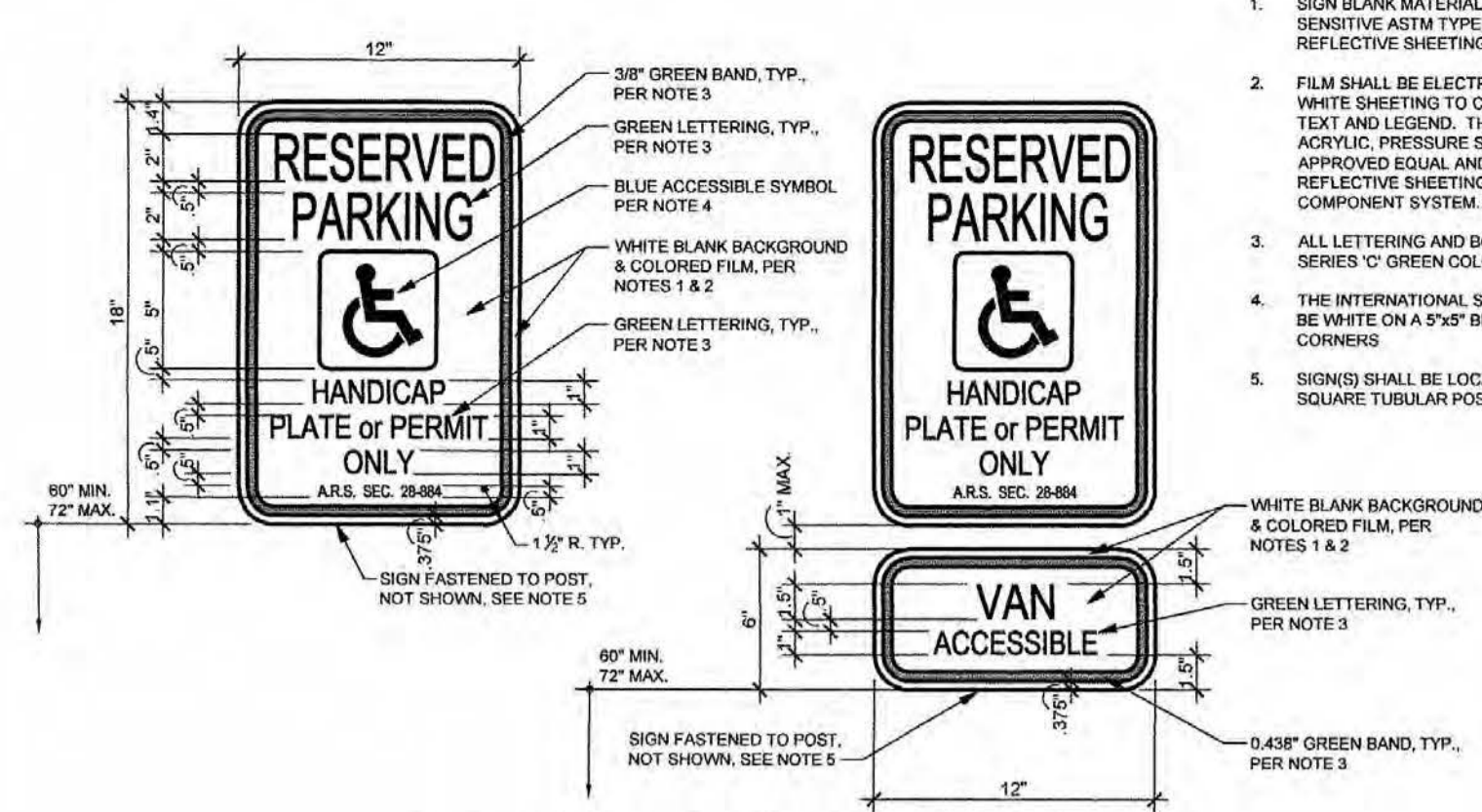
D ACCESSIBILITY SIGN
SCALE: 1 1/2" = 1'-0"



C ACCESSIBLE SIGNAGE
SCALE: NONE

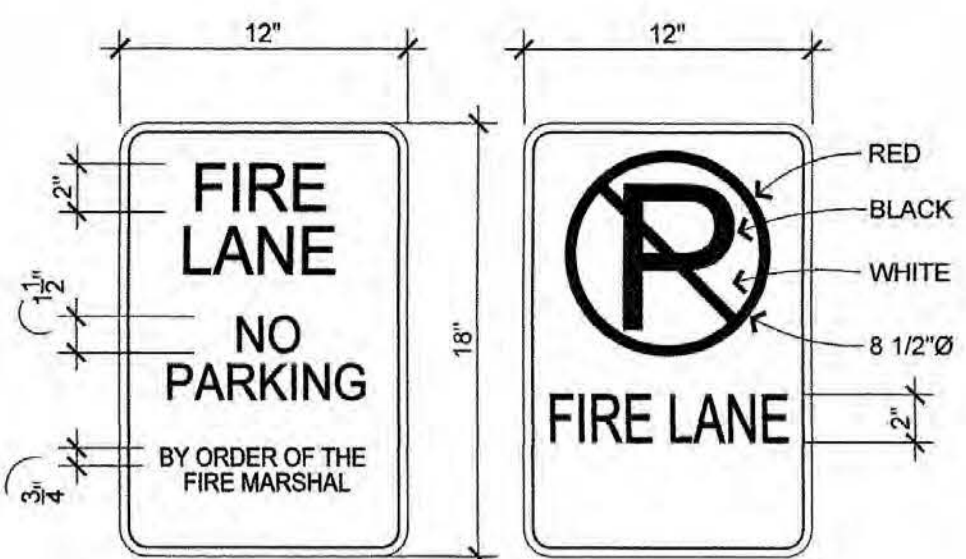
NOTE

ADA signs shall comply with the layout shown and shall be installed a minimum of 5' from the ground to the bottom of the sign but no more than 6' (to be in compliance with state law - ARS 28-882 and the requirements of the US Access Board)

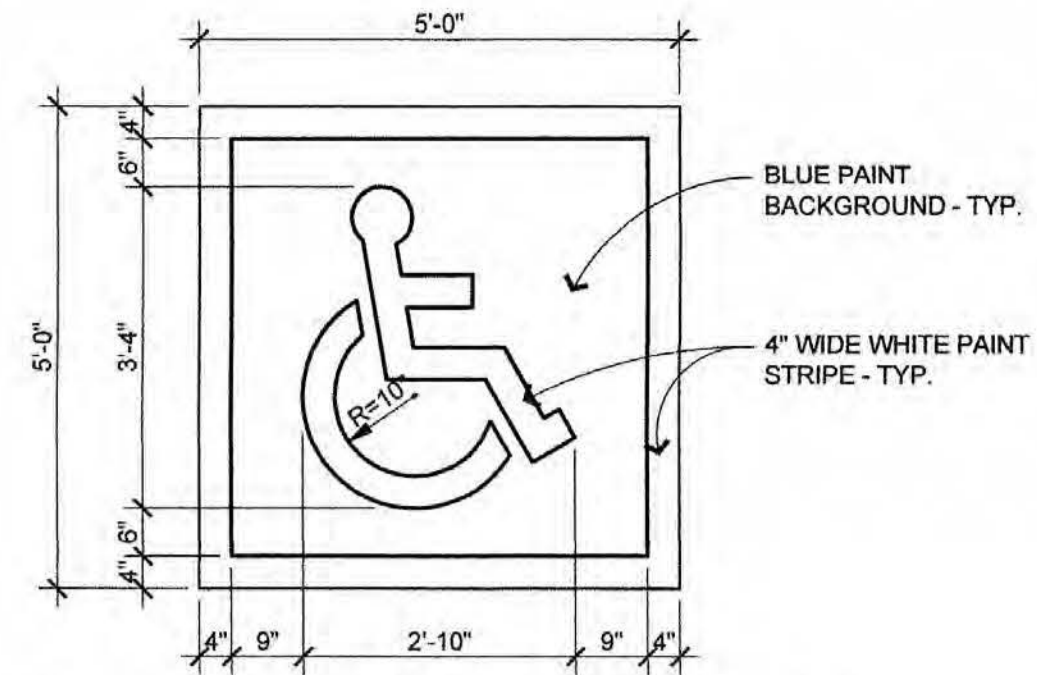


B FIRE LANE SIGNAGE
SCALE: 1 1/2" = 1'-0"

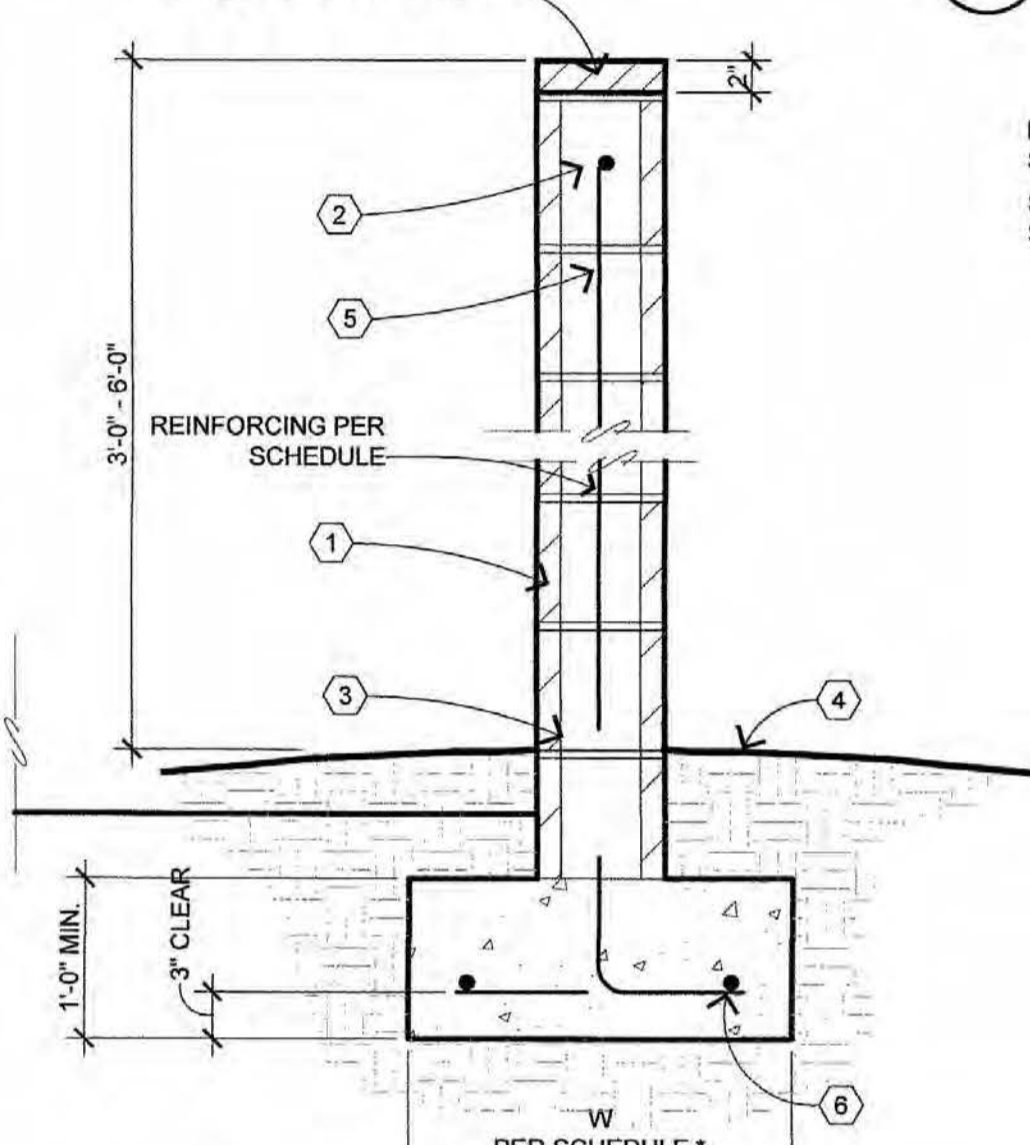
- The sign plate shall be a minimum of 12" x 18" with a thickness of .080 aluminum construction.
- The sign face shall have a white reflective background with a red legend. Use the standard 3M Scotchlite sign face Number R7-32 or equivalent, with red screen printed lettering as shown above.



A SYMBOL OF ACCESSIBILITY
SCALE: 1/2" = 1'-0"



J SCREEN WALL DETAIL
SCALE: 1" = 1'-0"

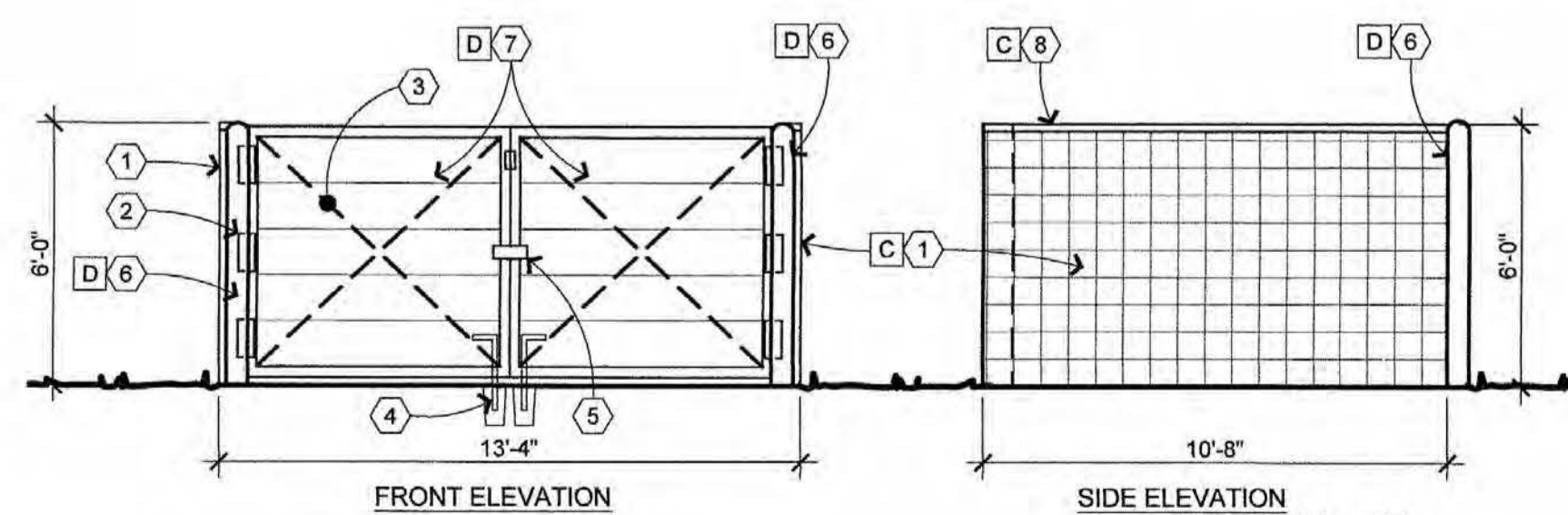


SCREENWALL DETAIL KEYNOTES:

- 8" MASONRY WALL
- (2) #5 IN 8" DEEP CONT. BOND BEAM
- DOWELS TO MATCH AND LAP VERT. WALL REINFORCING (72 BAR DIA. LAP). ALTERNATE DIRECTION OF BEND
- FINISH GRADE
- #5 VERTS AT 48" O.C. MAX.
- (2) #5 CONTINUOUS

H'	W'
H < 9'-0"	1'-4"
3'-1" < H ≤ 8'-0"	2'-0"

NOTE: PROVIDE MASONRY CONTROL JOINTS 20'-0" O.C. MAX.



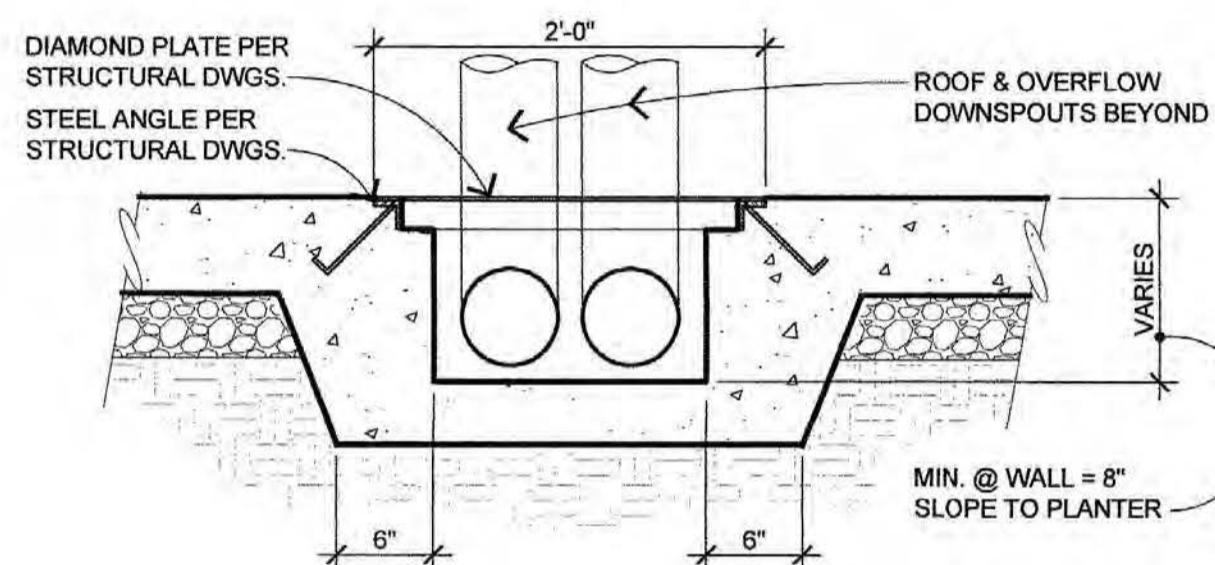
L TRASH ENCLOSURE ELEVATIONS
SCALE: 1/4" = 1'-0"

TRASH PAD ELEVATIONS KEYNOTES

- 6'-0" high, 8" architectural cmu wall. (Use center scored cmu)
- Gates to be hinged on the bollard (2 or 3 hinges).
- 1/2" or 3/4" steel rod, typ.
- 1/2" or 3/4" cane bolts at least 3" long.
- Latch placed mid-way up gates
- 4" diameter steel pipe bollard x 7'-0" long. Extend below finish grade 3'-0" into 2'-0" diameter concrete foot. Fill pipe with concrete
- Flat seam metal infill
- 2" solid cmu cap block

NOTE: See Sheet A-2 for paint colors

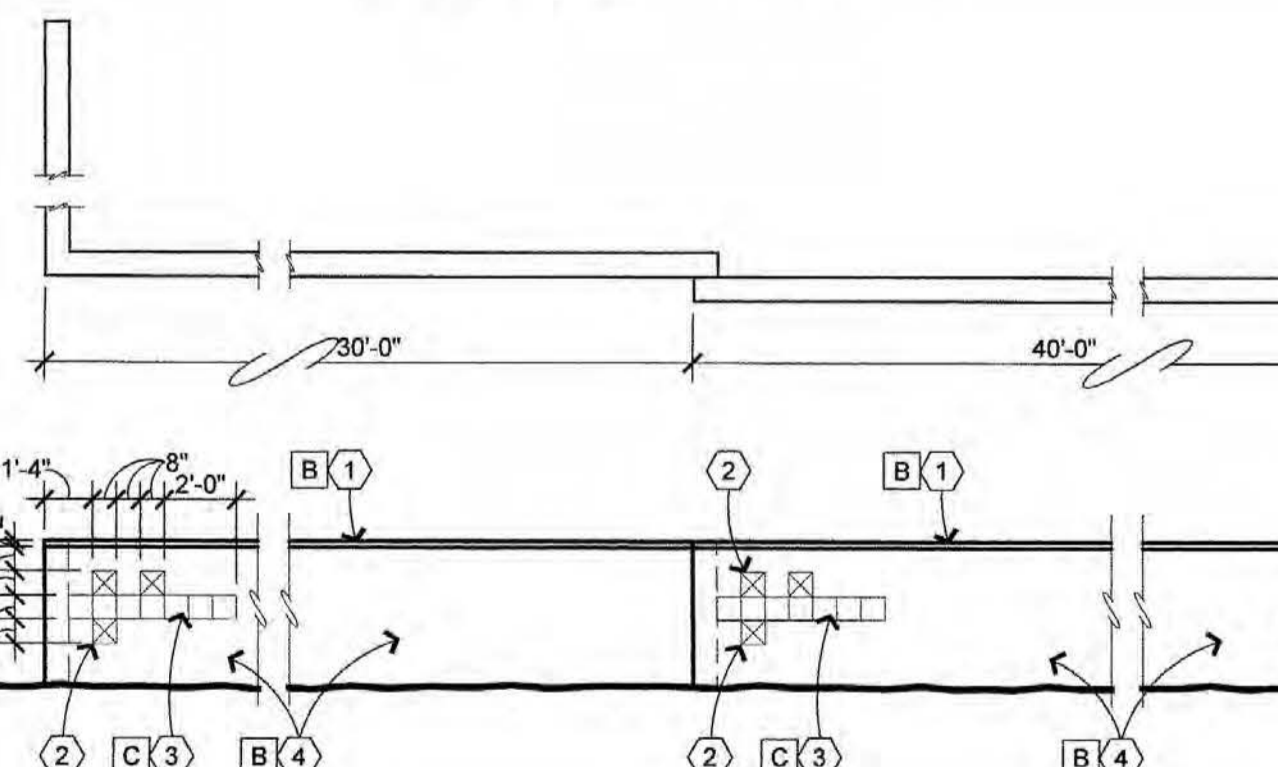
I TROUGH @ ROOF DRAIN
SCALE: 1" = 1'-0"



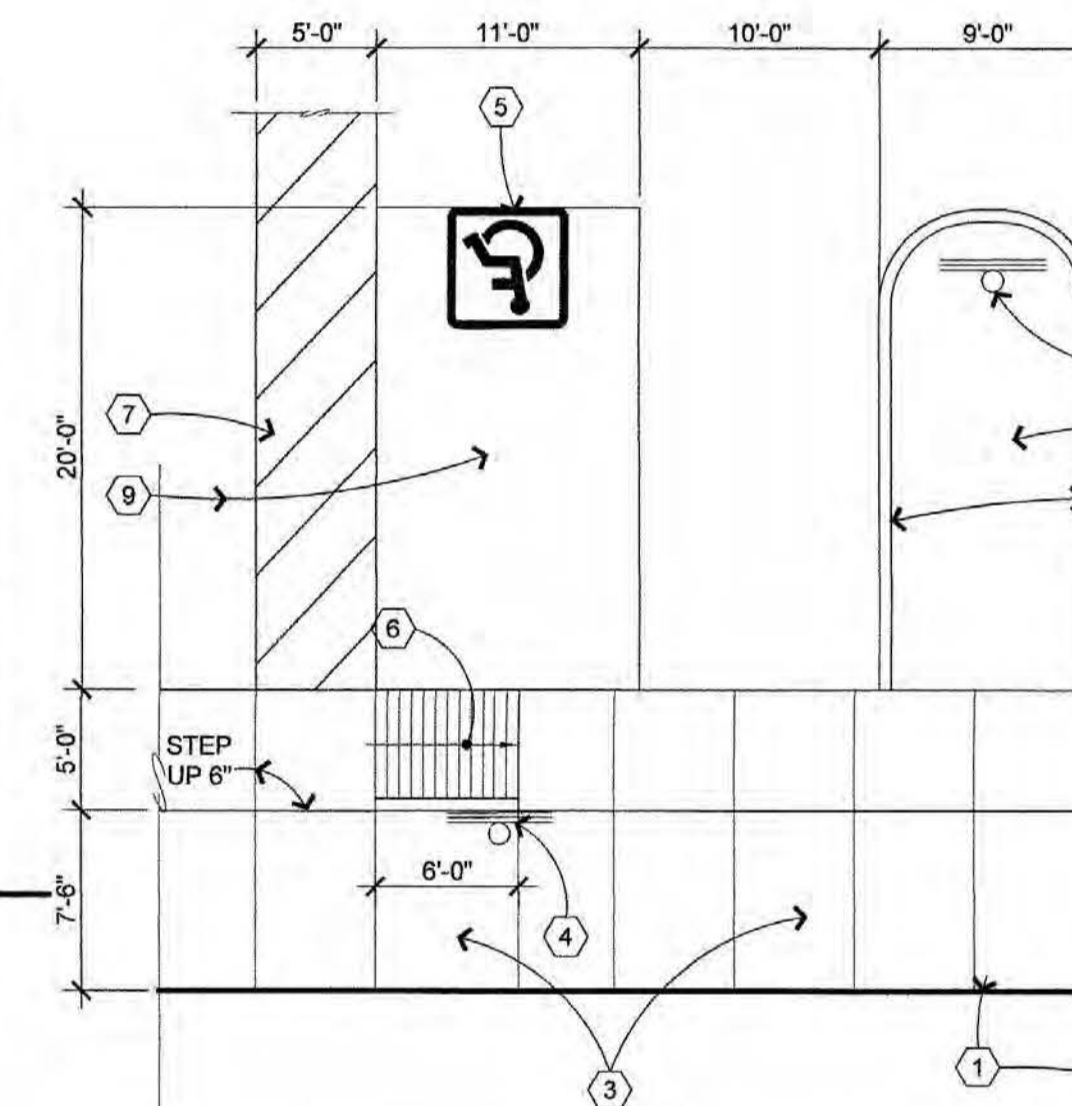
ACCESSIBLE PARKING KEYNOTES

- Face of proposed building
- 6" concrete curb per civil drawings
- 4" concrete sidewalk with salt finish
- Accessible signage per details
- Accessible symbol painted on pavement per details
- Ramp up maximum 1:12 with score joints per 2010 ADA Standards
- 4" wide yellow painted striping at 24" oc and at perimeter
- 4" concrete slab raised up to +6" above grade or match finish floor
- Asphalt pavement per civil drawings
- Bike rack for two bikes per details
- Landscape planter
- Provide signage, "DO NOT ENTER"
- Diamond plate @ trough per detail

H ACCESSIBLE PARKING - NWC
SCALE: 1/8" = 1'-0"



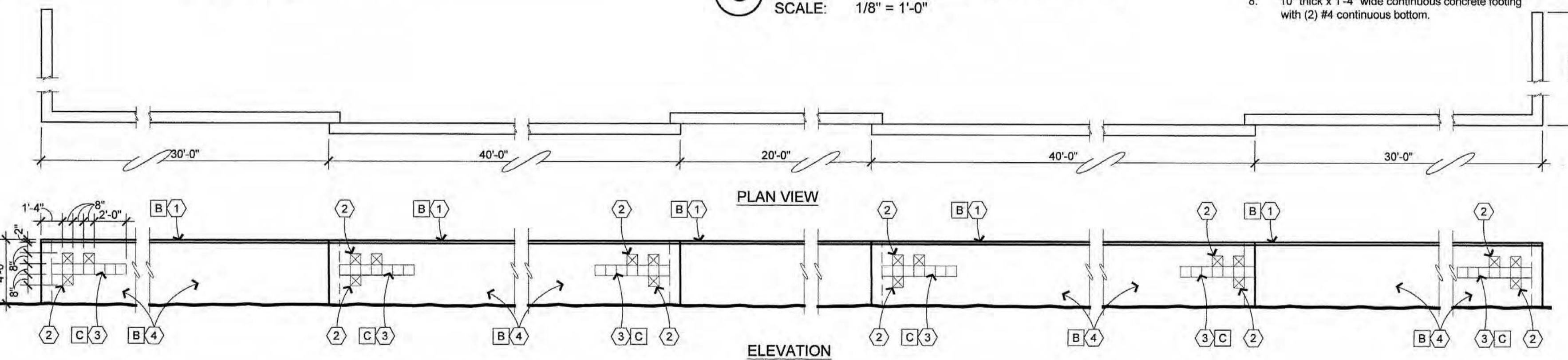
G ACCESSIBLE PARKING - NEC
SCALE: 1/8" = 1'-0"



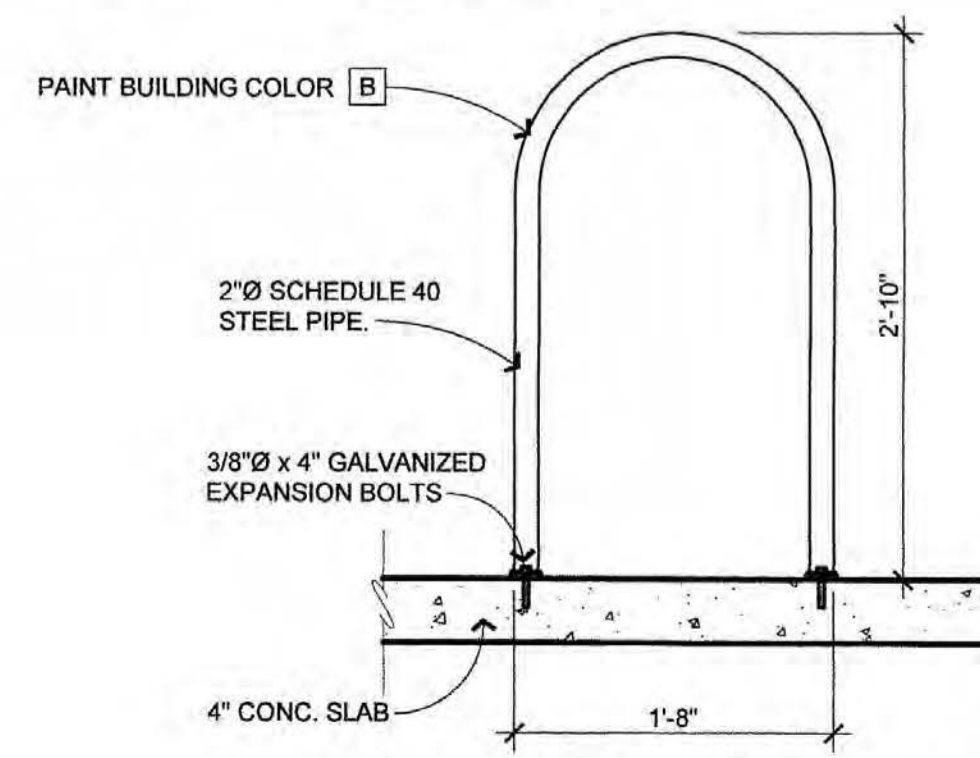
K SCREEN WALL
SCALE: 3/16" = 1'-0"

BELL ROAD CMU SCREEN WALL KEYNOTES

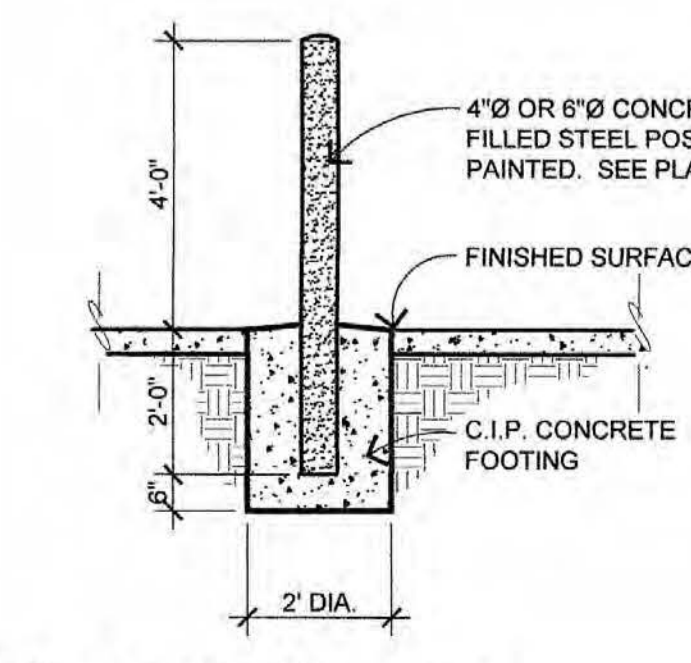
- 2" solid cmu cap block
- 8" x 8" opening, typical
- 8" center scored cmu
- 8" split faced cmu



N BIKE RACK ELEVATION
SCALE: 1" = 1'-0"



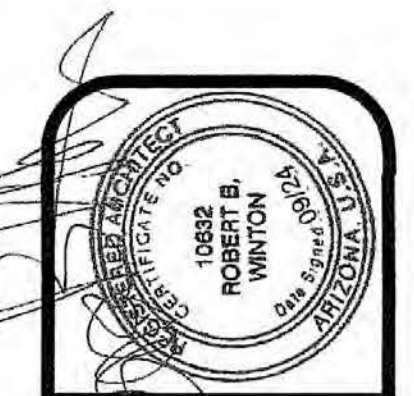
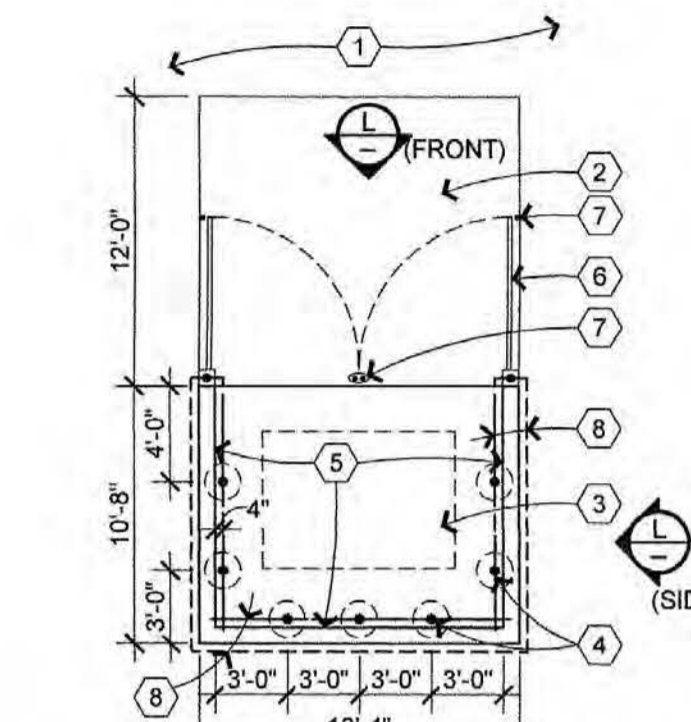
M PIPE BOLLARD
SCALE: 3/8" = 1'-0"



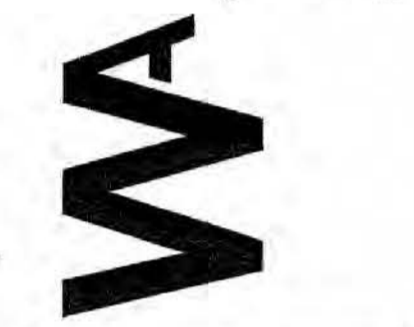
F TRASH ENCLOSURE BLOW-UP PLAN
SCALE: 1/8" = 1'-0"

TRASH PAD BLOW-UP PLAN KEYNOTES

- Existing pavement per civil drawings
- 6" thick, rebar reinforced concrete slab per structural drawings. 3% max. slope.
- Trash bins (NIC)
- 4" diameter steel pipe bollard x 7'-0" long. Extend below finish grade 3'-0" into 2'-0" diameter concrete foot. Fill pipe with concrete
- 6'-0" high, 8" architectural cmu wall, 8" masonry (cmu) with #4 rebar @ 48" o.c vertical and duroc (No. 4 gauge wire) horizontal ladder type joint reinforcement at 16" o.c.
- Pair 6'-0" x 6'-0" swing gates. Gates to be 2" x 3" tube steel with flat seam metal infill. Gates are to be welded to the bollards in front of the station.
- 1" diameter x 3" long sleeve pipe flush with pavement (4 total). These holes are to be kept clean at all times.
- 10" thick x 1'-4" wide continuous concrete footing with (2) #4 continuous bottom.



winton architects, inc.
Phoenix, Az. 85014
1435 E. Rancho Drive
(602) 230-9778
wintonarch@gmail.com



A NEW BUILDING FOR: KIWAMI ON BELL
5327 W. BELL ROAD
GLENDALE, ARIZONA 85306
LOGOS BUILDERS SOUTHWEST

job no. 24114
drawn LB
approved RBW
date 9/25/24

revisions

SP-2