



**winton architects, inc.**  
 Phoenix, AZ. 85014  
 1435 E. Rancho Drive  
 (602) 230-9778  
 wintonarch@gmail.com

**WA**

**A NEW BUILDING FOR: KIWAMI ON BELL**  
**5327 W. BELL ROAD**  
**GLENDALE, ARIZONA 85306**  
**LOGOS BUILDERS SOUTHWEST**

job no. 24-268  
 drawn DTR  
 approved FJN  
 date 12/02/24

revisions

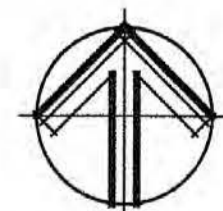
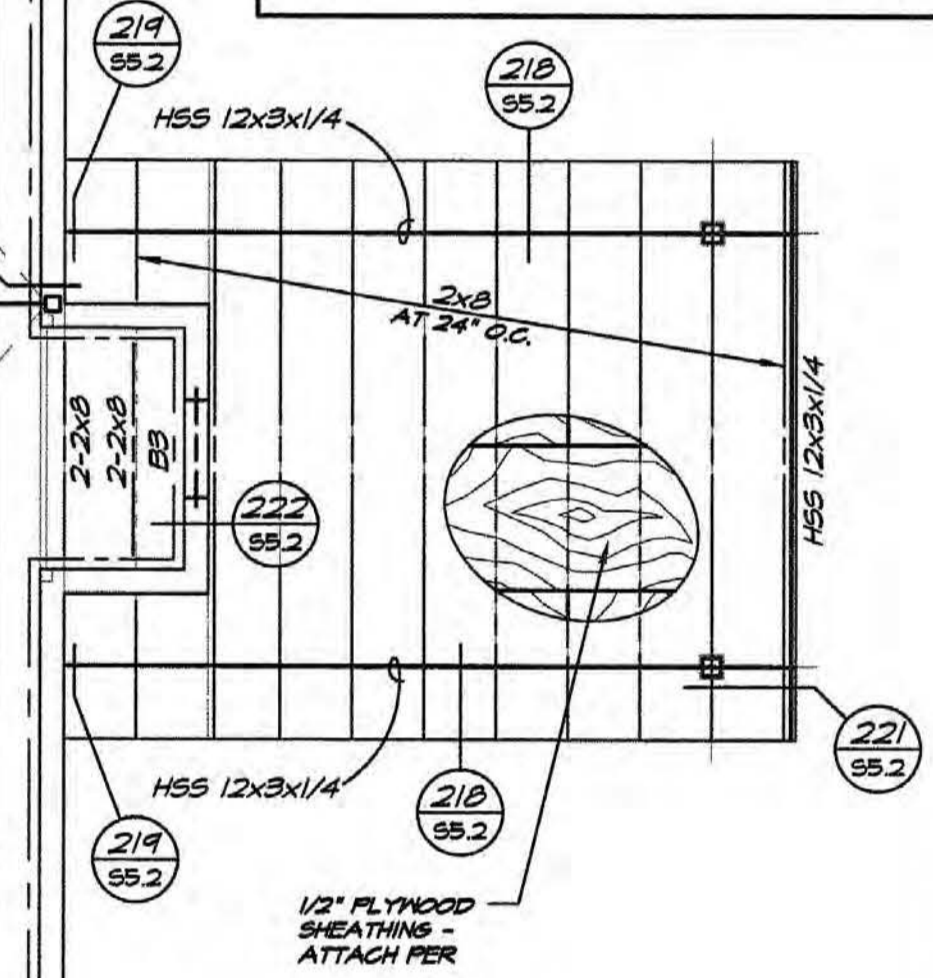
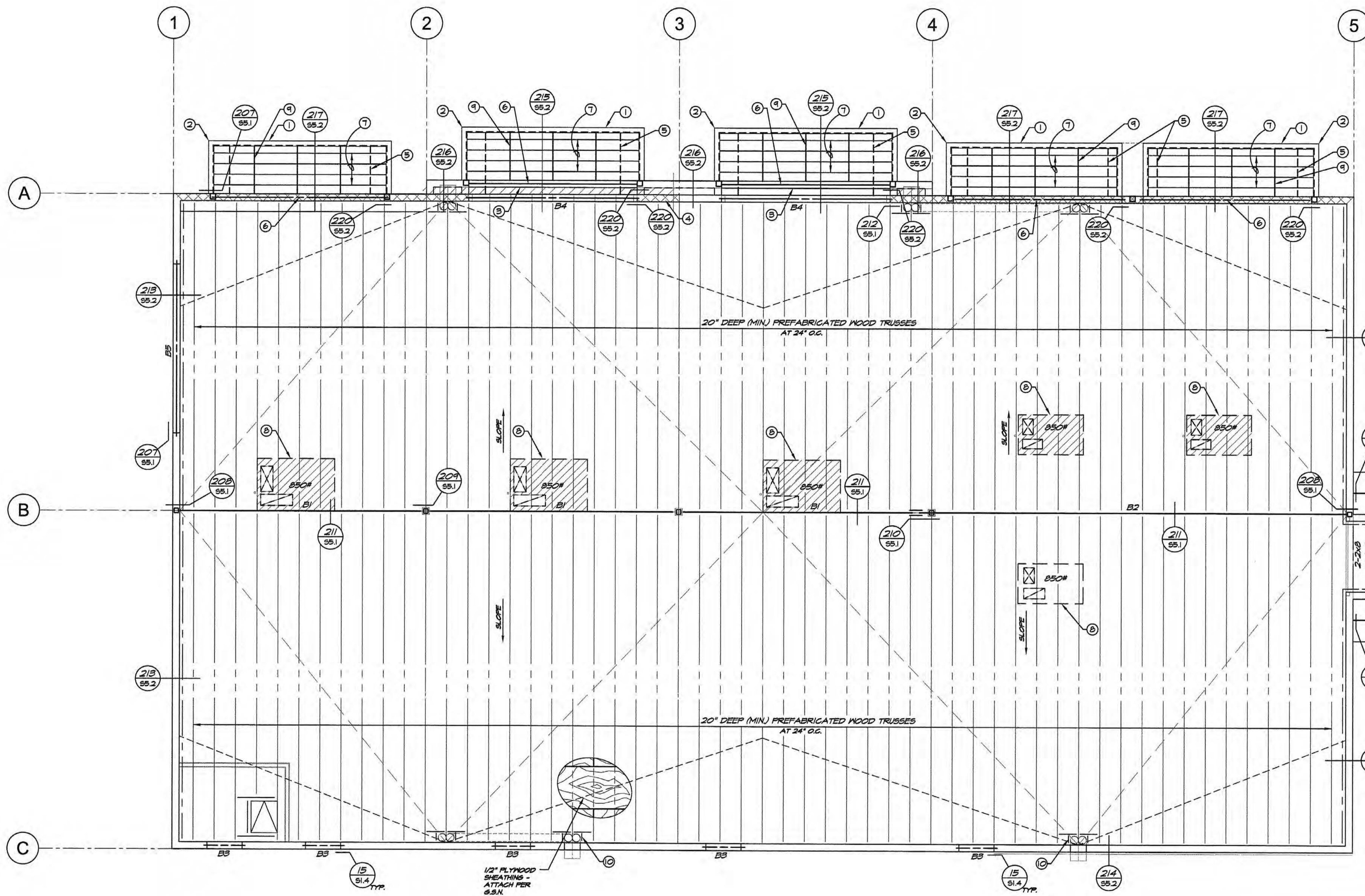
**S3.1**

**ROOF FRAMING NOTES:**

1. VERIFY ALL DIMENSIONS WITH ARCHITECTURAL DRAWINGS. ROOF ELEVATIONS, WHERE SHOWN, ARE TO BE PROVIDED AND VERIFIED BY THE ARCHITECT.
2. SCHEDULED MARK DESIGNATIONS ARE TYPICAL TO THE PROJECT AND MAY NOT NECESSARILY BE FOUND ON THIS PLAN.
3. B1, B2, ETC. - AS SHOWN ON PLAN INDICATES WOOD BEAM, SEE SCHEDULE SHEET S1.5.
4. FOR CLARITY, DETAILS MAY SHOW ONLY ONE SIDE OF FRAMING CONDITION.
5. FOR CLARITY, ALL ROOF OPENINGS MAY NOT BE SHOWN ON ROOF FRAMING PLAN. FOR EXACT SIZE, NUMBER AND LOCATION OF OPENINGS, SEE ARCHITECTURAL, MECHANICAL, PLUMBING AND ELECTRICAL DRAWINGS. FOR FRAMING AT OPENINGS, SEE TYPICAL DETAILS.
6. VERIFY EXACT SIZE AND WEIGHT OF EQUIPMENT ON ROOF WITH MECHANICAL CONTRACTOR.

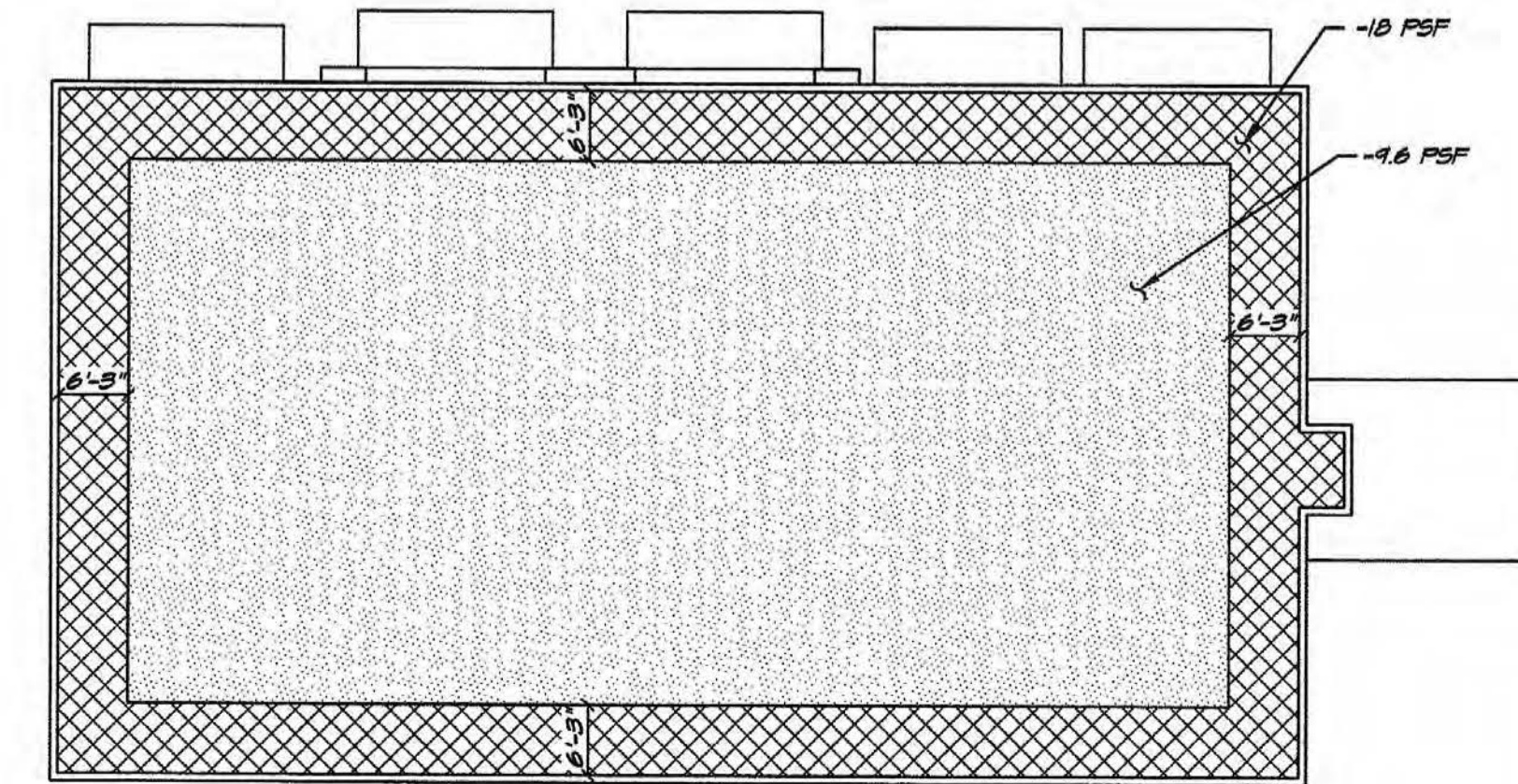
**PLAN NOTES:**

- 1 1/4"x16" DEEP "L" BENT PLATE PERIMETER CANOPY FRAME.
- 2 FULLY WELDED MITERED CORNER.
- 3 TRUSS MANUF. TO DESIGN FOR 100 (DL) WALL LOAD.
- 4 LINE OF FURRING WALL BELOW.
- 5 STEEL TIE ROD - SPACED PER ARCH'L DRAWINGS. REFER TO DETAIL 215/55.2.
- 6 HSS 16x4x1/4.
- 7 HSS 4x2x1/4 - TYPICAL.
- 8 MECH'L UNIT PER MECH'L DRAWINGS. REFER TO DETAIL 205/55.1 FOR FRAMING OF PLATFORM AND DETAIL 205/55.1 FOR FRAMING AT DUCT OPENING - TYPICAL.
- 9 HSS 6x3x1/4.
- 10 2-2x12 BLOCKING AROUND DRAIN PIPES.



**ROOF FRAMING PLAN**

SCALE: 3/16" = 1'-0"



**NET WIND UPLIFT DIAGRAM**

**[bn]**  
 bakkum noelke  
 CONSULTING  
 structural engineers  
 2025 E. Arizona Biltmore Dr.  
 Phoenix, AZ. 85016  
 Phone 602.855.5200  
 Email info@bakkumnoelke.com  
 web@bakkumnoelke.com