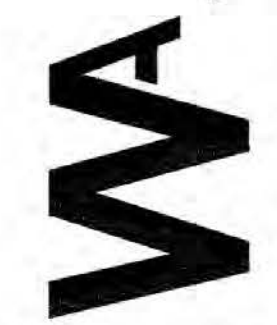


winton architects, inc.
 Phoenix, Az. 85014
 1435 E. Rancho Drive
 (602) 230-9778
 wintonarch@gmail.com

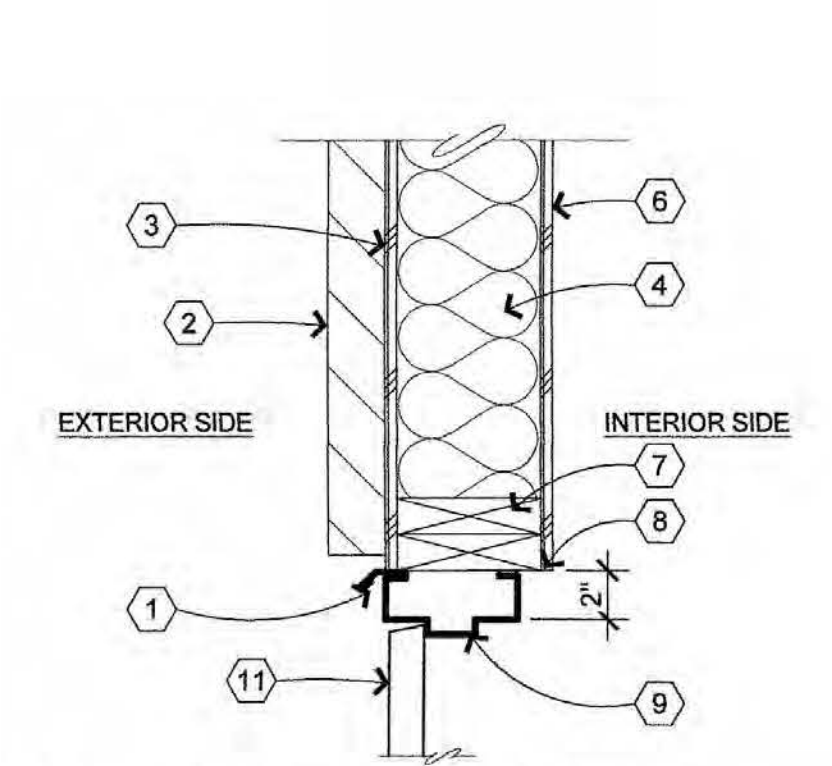


A NEW BUILDING FOR: KIWAMI ON BELL
 5327 W. BELL ROAD
 GLENDALE, ARIZONA 85306
 LOGOS BUILDERS SOUTHWEST

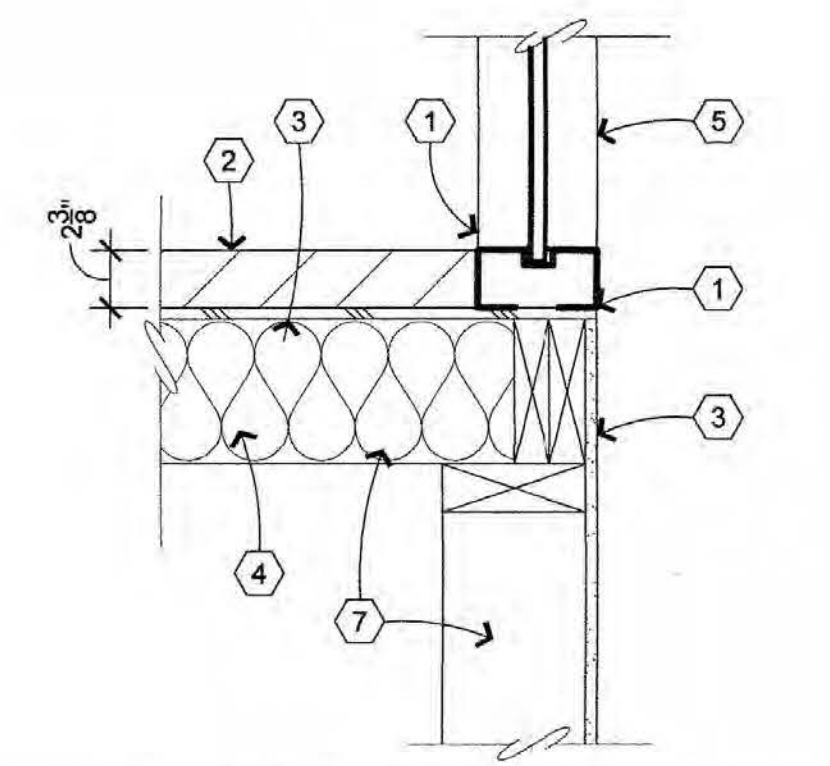
job no. 24114
 drawn LB
 approved RBW
 date 9/25/24

revisions

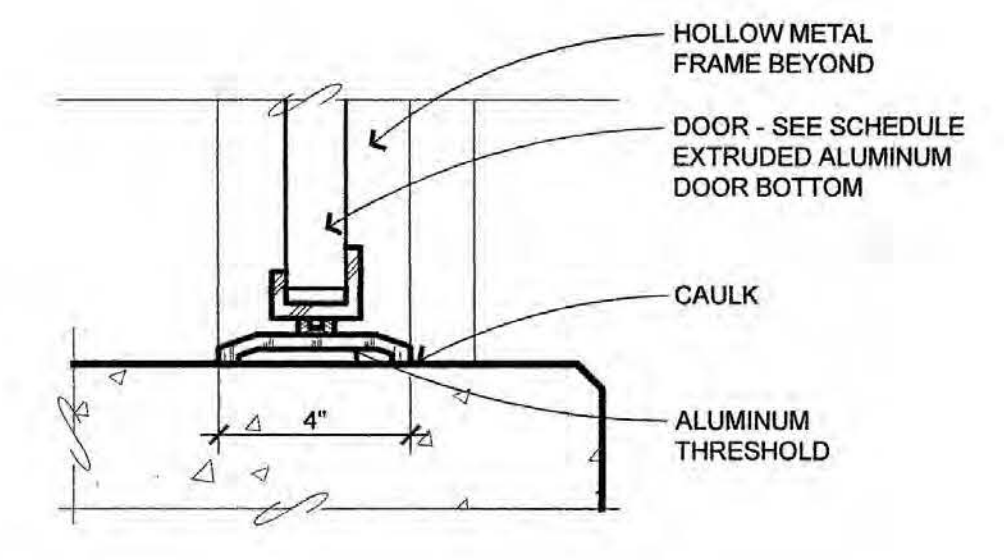
A-5



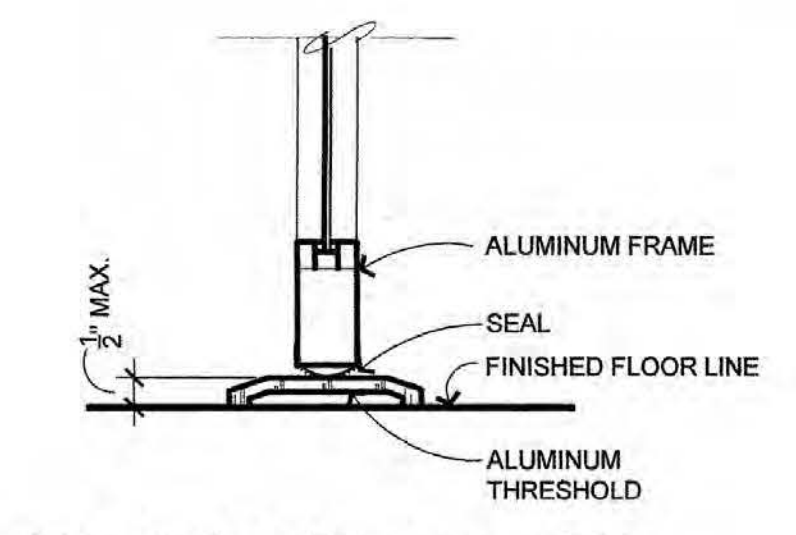
E JAMB @ HM DOOR
 SCALE: 1 1/2" = 1'-0"



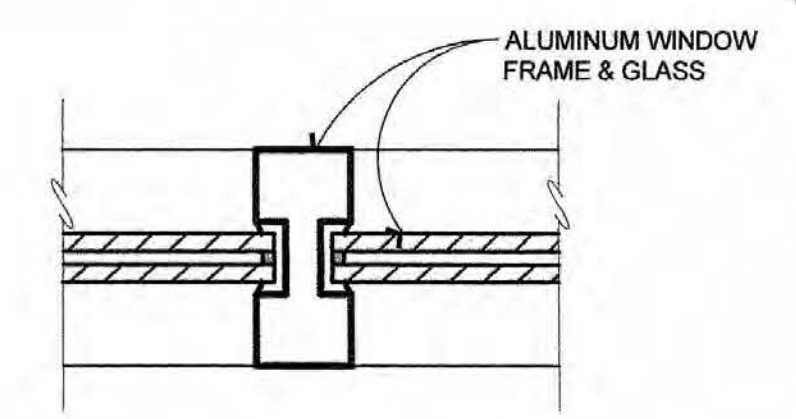
D STOREFRONT JAMB
 SCALE: 1 1/2" = 1'-0"



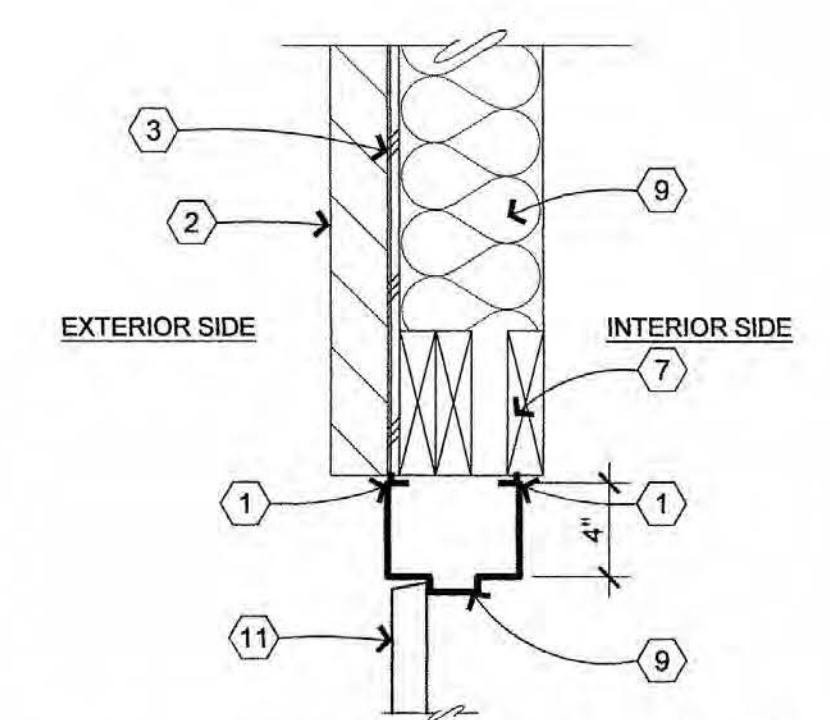
C THRESHOLD - H.M. DOOR DET.
 SCALE: 3" = 1'-0"



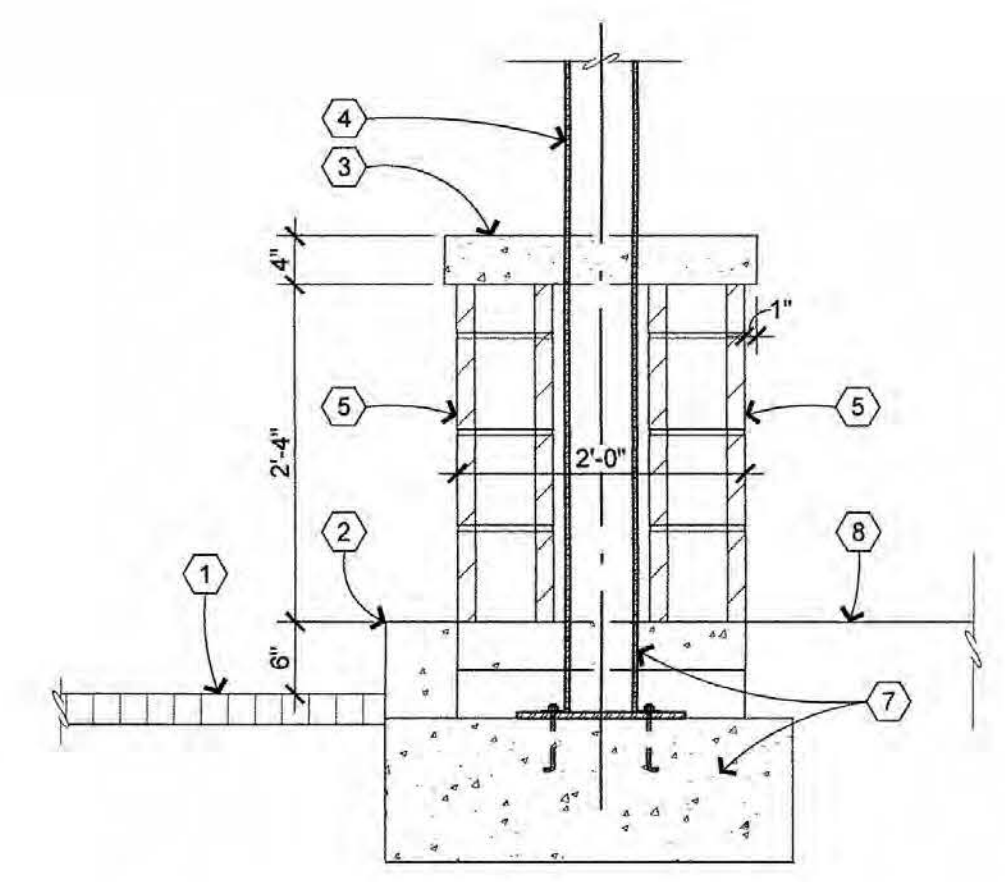
B THRESHOLD - ALUM. DOOR DET.
 SCALE: 3" = 1'-0"



G TYP. VERTICAL MULLION
 SCALE: 3" = 1'-0"



F HEADER @ HM DOOR
 SCALE: 1 1/2" = 1'-0"



A SECTION @ CANOPY COLUMN
 SCALE: 3/4" = 1'-0"

- SECTION AT CANOPY COLUMN PEDESTAL KEYNOTES:**
- Asphalt pavement per civil drawings
 - 6" cast-in-place concrete
 - 4" thick concrete cap
 - Steel pipe column per structural drawings
 - 8" split faced center scored cmu
 - 4" concrete at raised pad
 - See structural drawings
 - Landscape per Site Plan

- JAMB AND HEAD DETAIL KEYNOTES**
- Continuous caulking
 - 2 3/8" cmu veneer per exterior elevations
 - Plywood sheathing per structural drawings
 - 6" batt insulation (R19)
 - Storefront glass/framing
 - 5/8" drywall
 - 2 x 6 stud wall per structural drawings
 - Casing bead at drywall
 - 16ga hollow metal door frame
 - 18ga hollow metal door per schedule