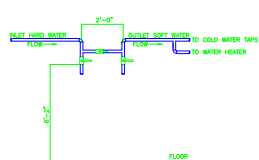
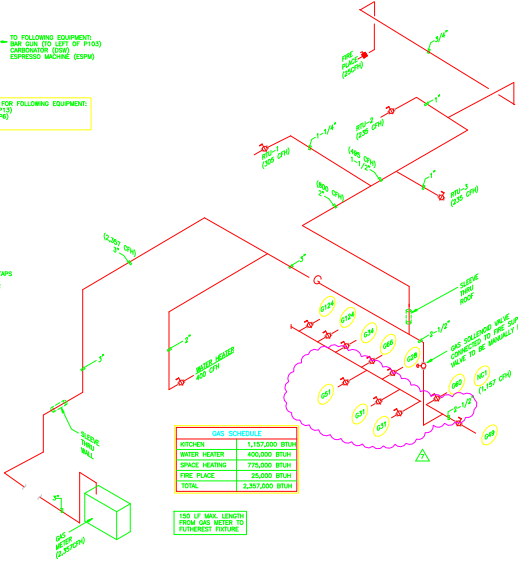


01 FILTER SYSTEM
NO SCALE



02 WATER SOFTENER BYPASS VALVE
NO SCALE

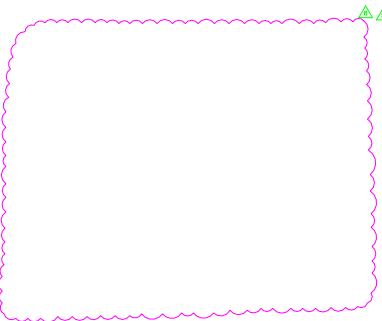


GAS SCHEDULE

KITCHEN	1,157,000 BTUH
WATER HEATER	400,000 BTUH
SPACE HEATING	775,000 BTUH
FIRE PLACE	35,000 BTUH
TOTAL	2,357,000 BTUH

100 LF MAX. LENGTH FROM GAS METER TO FURNACE/FIXTURE

03 GAS RISER DIAGRAM
NO SCALE



05 GAS WATER HEATER PIPING DIAGRAM
NO SCALE

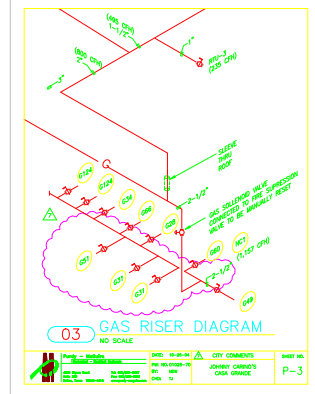
PLUMBING FIXTURE SCHEDULE

TYPE	DESCRIPTION
WC-A	AMERICAN STANDARD #2243A15, 1.50L/FUSH, ELONGATED, COMPLETE WITH #481310-100 BOLT CAPS. CURBNET. PPS OPEN FRONT. SEAT LESS COVER. SLOAN #111 FLUSH VALVE.
WC-B	AMERICAN STANDARD #2243A102, 1.5 0A/FUSH, ELONGATED, COMPLETE WITH #481310-100 BOLT CAPS. CURBNET. PPS OPEN FRONT. SEAT LESS COVER. SLOAN #111 FLUSH VALVE. ADA COMPLIANT.
UR-A	AMERICAN STANDARD #841-132 MOUNT RM 17" A.F.F. COMPLETE WITH SLOAN ROVAL #184-1 FLUSH VALVE 1/2" S.S.F.
LAV-A	AMERICAN STANDARD SELF DRAINING #2047A20R COMPLETE WITH 2085-130 FAUCET AND STRAINER WITH TALLFACE. 3 GPM RESTRICTION. INSTANT DRINK AND HOT WATER DRINKING WITH "HUBBARD" TAP GLASS"
WOP	WOP FAUCET - PPS. 1/2" O.D. 1/2" O.D. FAUCET AND NO. 132 HOSE AND TRACKET.
FD	FLOOR DRAIN - JR SMITH #2025-A - COMPLETE WITH DEEP SEAL P-TRAP AND TRAP PRIMER ALLET. NICKEL FINISH. TOP IN BATHROOM AND KITCHEN AND EAST BOWL TOP IN WATER HEATER ROOM.
FS	FLOOR SINK - JR SMITH #2140-12 - COMPLETE WITH SEDIMENT BUCKET AND 1/2" GRATE.
WATER	WATER HEATER - A.D. SMITH MODEL #8TH-400A, 130 GAL. STORAGE CAPACITY, 480 GPM RECOVERY @ 100°F RISE. 400,000 BTUH.
WH-1	SHALL BE EQUAL TO WOODFORD MODEL HOT AND COLD WATER HOSE BB WITH VACUUM BREAKER.
WH-2	SHALL BE EQUAL TO WOODFORD MODEL 45 COLD WATER HOSE BB WITH VACUUM BREAKER.
WH-3	SHALL BE EQUAL TO WOODFORD MODEL 17 COLD WATER HOSE BB FOR CONNECTION TO WATER.
TD-1	TRENCH DRAIN SHALL BE EQUAL TO POLY DRAIN #840 12" WIDE CHANNEL WITH SLOTTED STAINLESS STEEL GRADE END CAPS, #840 A BOTTOM OUTLET, #233 OUTLET STRAINER. OVERALL TRENCH DRAIN GRATE SIZE SHALL BE 12"X40"
TD-2	TRENCH DRAIN SHALL BE EQUAL TO POLY DRAIN #840 12" WIDE CHANNEL WITH SLOTTED STAINLESS STEEL GRADE END CAPS, #840 A BOTTOM OUTLET, #233 OUTLET STRAINER. OVERALL TRENCH DRAIN GRATE SIZE SHALL BE 12"X18"
TV	TEMPERING VALVE SHALL BE EQUAL TO 259080S #4-1/4" (SET @ 110°F MAX).

NOTE: ALL PLUMBING FIXTURES INCLUDING ALL FLOOR DRAIN, FLOOR SINKS AND SODA LINES ARE TO BE PROVIDED UNDER GENERAL CONTRACT AND PROVIDED BY GENERAL CONTRACTOR.

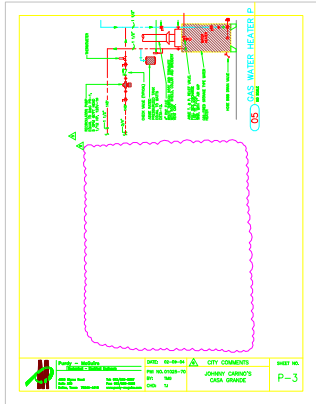
PLUMBING SCHEDULE

P1	1/2" C.B. 40" A.F.F. FOR COFFEE MAKER
P2	1/2" C.B. 40" A.F.F. FOR TEA MAKER
P6	1/2" C.B. 15" A.F.F. FOR SODA LINE
P7	1/2" C.B. 30" A.F.F. FOR SINK FAUCET
P8	1/2" C.B. 30" A.F.F. FOR SINK FAUCET
P9	1/2" C.B. 30" A.F.F. FOR SINK FAUCET
P10	1/2" C.B. 30" A.F.F. FOR SINK FAUCET
P11	1/2" C.B. 30" A.F.F. FOR SINK FAUCET
P12	1/2" C.B. 15" A.F.F. B.S.C. ON DISPOSABLE FAUCETS
P13	1/2" C.B. 12" A.F.F. B.S.C. ON DISPOSABLE FAUCETS
P14	1/2" C.B. 12" A.F.F. B.S.C. ON DISPOSABLE FAUCETS
P15	1/2" C.B. 12" A.F.F. B.S.C. ON DISPOSABLE FAUCETS
P16	1/2" C.B. 12" A.F.F. B.S.C. ON DISPOSABLE FAUCETS
P17	1/2" C.B. 12" A.F.F. B.S.C. ON DISPOSABLE FAUCETS
P18	1/2" C.B. 12" A.F.F. B.S.C. ON DISPOSABLE FAUCETS
P19	1/2" C.B. 12" A.F.F. B.S.C. ON DISPOSABLE FAUCETS
P20	1/2" C.B. 12" A.F.F. B.S.C. ON DISPOSABLE FAUCETS
P21	1/2" C.B. 12" A.F.F. B.S.C. ON DISPOSABLE FAUCETS
P22	1/2" C.B. 12" A.F.F. B.S.C. ON DISPOSABLE FAUCETS
P23	1/2" C.B. 12" A.F.F. B.S.C. ON DISPOSABLE FAUCETS
P24	1/2" C.B. 12" A.F.F. B.S.C. ON DISPOSABLE FAUCETS
P25	1/2" C.B. 12" A.F.F. B.S.C. ON DISPOSABLE FAUCETS
P26	1/2" C.B. 12" A.F.F. B.S.C. ON DISPOSABLE FAUCETS
P27	1/2" C.B. 12" A.F.F. B.S.C. ON DISPOSABLE FAUCETS
P28	1/2" C.B. 12" A.F.F. B.S.C. ON DISPOSABLE FAUCETS
P29	1/2" C.B. 12" A.F.F. B.S.C. ON DISPOSABLE FAUCETS
P30	1/2" C.B. 12" A.F.F. B.S.C. ON DISPOSABLE FAUCETS
P31	1/2" C.B. 12" A.F.F. B.S.C. ON DISPOSABLE FAUCETS
P32	1/2" C.B. 12" A.F.F. B.S.C. ON DISPOSABLE FAUCETS
P33	1/2" C.B. 12" A.F.F. B.S.C. ON DISPOSABLE FAUCETS
P34	1/2" C.B. 12" A.F.F. B.S.C. ON DISPOSABLE FAUCETS
P35	1/2" C.B. 12" A.F.F. B.S.C. ON DISPOSABLE FAUCETS
P36	1/2" C.B. 12" A.F.F. B.S.C. ON DISPOSABLE FAUCETS
P37	1/2" C.B. 12" A.F.F. B.S.C. ON DISPOSABLE FAUCETS
P38	1/2" C.B. 12" A.F.F. B.S.C. ON DISPOSABLE FAUCETS
P39	1/2" C.B. 12" A.F.F. B.S.C. ON DISPOSABLE FAUCETS
P40	1/2" C.B. 12" A.F.F. B.S.C. ON DISPOSABLE FAUCETS
P41	1/2" C.B. 12" A.F.F. B.S.C. ON DISPOSABLE FAUCETS
P42	1/2" C.B. 12" A.F.F. B.S.C. ON DISPOSABLE FAUCETS
P43	1/2" C.B. 12" A.F.F. B.S.C. ON DISPOSABLE FAUCETS
P44	1/2" C.B. 12" A.F.F. B.S.C. ON DISPOSABLE FAUCETS
P45	1/2" C.B. 12" A.F.F. B.S.C. ON DISPOSABLE FAUCETS
P46	1/2" C.B. 12" A.F.F. B.S.C. ON DISPOSABLE FAUCETS
P47	1/2" C.B. 12" A.F.F. B.S.C. ON DISPOSABLE FAUCETS
P48	1/2" C.B. 12" A.F.F. B.S.C. ON DISPOSABLE FAUCETS
P49	1/2" C.B. 12" A.F.F. B.S.C. ON DISPOSABLE FAUCETS
P50	1/2" C.B. 12" A.F.F. B.S.C. ON DISPOSABLE FAUCETS
P51	1/2" C.B. 12" A.F.F. B.S.C. ON DISPOSABLE FAUCETS
P52	1/2" C.B. 12" A.F.F. B.S.C. ON DISPOSABLE FAUCETS
P53	1/2" C.B. 12" A.F.F. B.S.C. ON DISPOSABLE FAUCETS
P54	1/2" C.B. 12" A.F.F. B.S.C. ON DISPOSABLE FAUCETS
P55	1/2" C.B. 12" A.F.F. B.S.C. ON DISPOSABLE FAUCETS
P56	1/2" C.B. 12" A.F.F. B.S.C. ON DISPOSABLE FAUCETS
P57	1/2" C.B. 12" A.F.F. B.S.C. ON DISPOSABLE FAUCETS
P58	1/2" C.B. 12" A.F.F. B.S.C. ON DISPOSABLE FAUCETS
P59	1/2" C.B. 12" A.F.F. B.S.C. ON DISPOSABLE FAUCETS
P60	1/2" C.B. 12" A.F.F. B.S.C. ON DISPOSABLE FAUCETS
P61	1/2" C.B. 12" A.F.F. B.S.C. ON DISPOSABLE FAUCETS
P62	1/2" C.B. 12" A.F.F. B.S.C. ON DISPOSABLE FAUCETS
P63	1/2" C.B. 12" A.F.F. B.S.C. ON DISPOSABLE FAUCETS
P64	1/2" C.B. 12" A.F.F. B.S.C. ON DISPOSABLE FAUCETS
P65	1/2" C.B. 12" A.F.F. B.S.C. ON DISPOSABLE FAUCETS
P66	1/2" C.B. 12" A.F.F. B.S.C. ON DISPOSABLE FAUCETS
P67	1/2" C.B. 12" A.F.F. B.S.C. ON DISPOSABLE FAUCETS
P68	1/2" C.B. 12" A.F.F. B.S.C. ON DISPOSABLE FAUCETS
P69	1/2" C.B. 12" A.F.F. B.S.C. ON DISPOSABLE FAUCETS
P70	1/2" C.B. 12" A.F.F. B.S.C. ON DISPOSABLE FAUCETS
P71	1/2" C.B. 12" A.F.F. B.S.C. ON DISPOSABLE FAUCETS
P72	1/2" C.B. 12" A.F.F. B.S.C. ON DISPOSABLE FAUCETS
P73	1/2" C.B. 12" A.F.F. B.S.C. ON DISPOSABLE FAUCETS
P74	1/2" C.B. 12" A.F.F. B.S.C. ON DISPOSABLE FAUCETS
P75	1/2" C.B. 12" A.F.F. B.S.C. ON DISPOSABLE FAUCETS
P76	1/2" C.B. 12" A.F.F. B.S.C. ON DISPOSABLE FAUCETS
P77	1/2" C.B. 12" A.F.F. B.S.C. ON DISPOSABLE FAUCETS
P78	1/2" C.B. 12" A.F.F. B.S.C. ON DISPOSABLE FAUCETS
P79	1/2" C.B. 12" A.F.F. B.S.C. ON DISPOSABLE FAUCETS
P80	1/2" C.B. 12" A.F.F. B.S.C. ON DISPOSABLE FAUCETS
P81	1/2" C.B. 12" A.F.F. B.S.C. ON DISPOSABLE FAUCETS
P82	1/2" C.B. 12" A.F.F. B.S.C. ON DISPOSABLE FAUCETS
P83	1/2" C.B. 12" A.F.F. B.S.C. ON DISPOSABLE FAUCETS
P84	1/2" C.B. 12" A.F.F. B.S.C. ON DISPOSABLE FAUCETS
P85	1/2" C.B. 12" A.F.F. B.S.C. ON DISPOSABLE FAUCETS
P86	1/2" C.B. 12" A.F.F. B.S.C. ON DISPOSABLE FAUCETS
P87	1/2" C.B. 12" A.F.F. B.S.C. ON DISPOSABLE FAUCETS
P88	1/2" C.B. 12" A.F.F. B.S.C. ON DISPOSABLE FAUCETS
P89	1/2" C.B. 12" A.F.F. B.S.C. ON DISPOSABLE FAUCETS
P90	1/2" C.B. 12" A.F.F. B.S.C. ON DISPOSABLE FAUCETS
P91	1/2" C.B. 12" A.F.F. B.S.C. ON DISPOSABLE FAUCETS
P92	1/2" C.B. 12" A.F.F. B.S.C. ON DISPOSABLE FAUCETS
P93	1/2" C.B. 12" A.F.F. B.S.C. ON DISPOSABLE FAUCETS
P94	1/2" C.B. 12" A.F.F. B.S.C. ON DISPOSABLE FAUCETS
P95	1/2" C.B. 12" A.F.F. B.S.C. ON DISPOSABLE FAUCETS
P96	1/2" C.B. 12" A.F.F. B.S.C. ON DISPOSABLE FAUCETS
P97	1/2" C.B. 12" A.F.F. B.S.C. ON DISPOSABLE FAUCETS
P98	1/2" C.B. 12" A.F.F. B.S.C. ON DISPOSABLE FAUCETS
P99	1/2" C.B. 12" A.F.F. B.S.C. ON DISPOSABLE FAUCETS
P100	1/2" C.B. 12" A.F.F. B.S.C. ON DISPOSABLE FAUCETS



03 GAS RISER DIAGRAM
NO SCALE

Project: [redacted]	Sheet No: P-3	City Comments: [redacted]
Revision: [redacted]	Scale: [redacted]	Drawn: [redacted]
Checked: [redacted]	Approved: [redacted]	Date: [redacted]



05 GAS WATER HEATER PIPING
NO SCALE

Project: [redacted]	Sheet No: P-3	City Comments: [redacted]
Revision: [redacted]	Scale: [redacted]	Drawn: [redacted]
Checked: [redacted]	Approved: [redacted]	Date: [redacted]