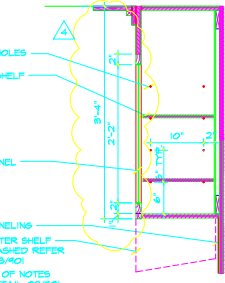
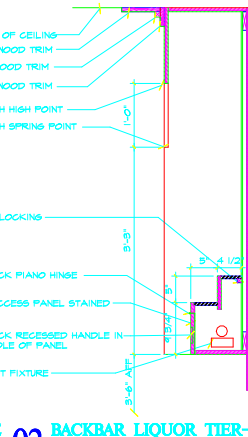
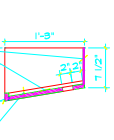


**04 BACKBAR CABINET-STAIN GRADE**  
1" = 1'-0"

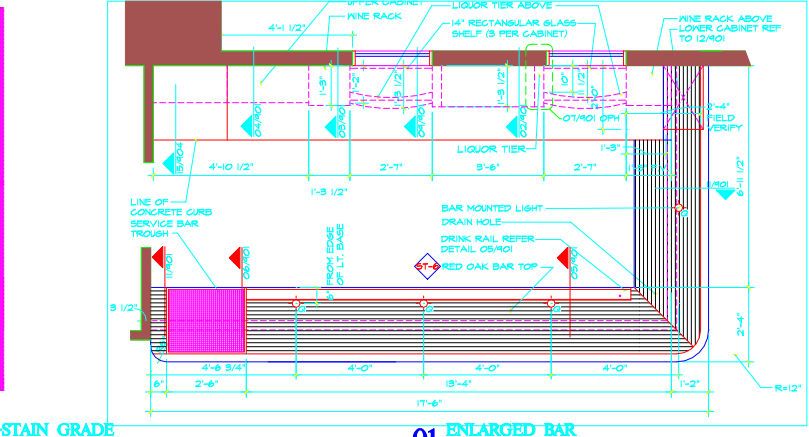
**09 BACKBAR AT WINDOW-STAIN GRADE**  
1" = 1'-0"



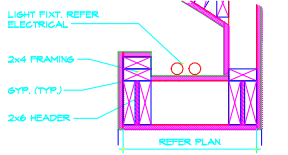
**03 BACKBAR WINE RACK-STAIN GRADE**  
1" = 1'-0"



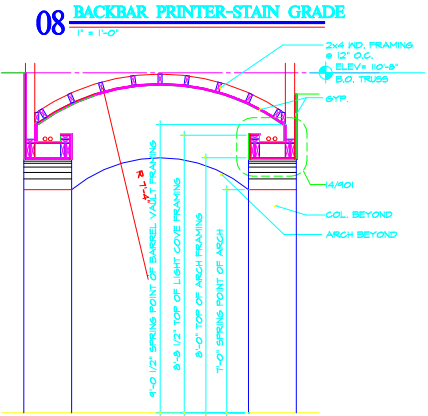
**02 BACKBAR LIQUOR TIER-STAIN GRADE**  
1" = 1'-0"



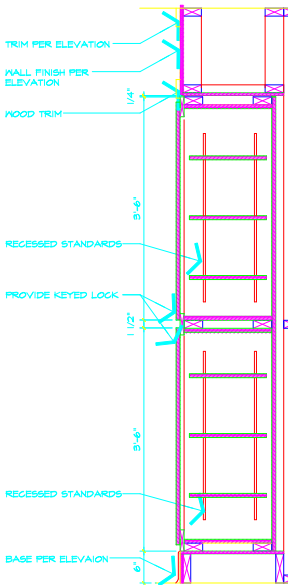
**01 ENLARGED BAR**  
1/2" = 1'-0"



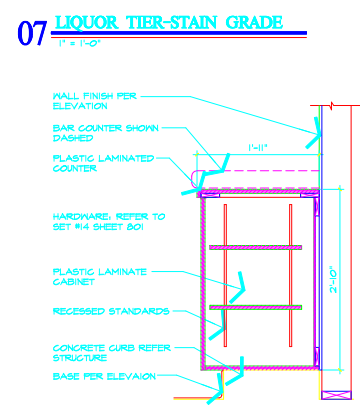
**14 LIGHT COVER**  
1/2" = 1'-0"



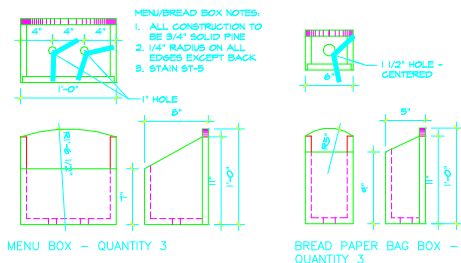
**13 BARRELL VAULT**  
1/2" = 1'-0"



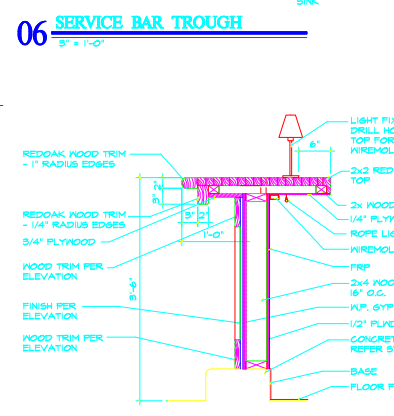
**18 TO-GO CABINET**  
1" = 1'-0"



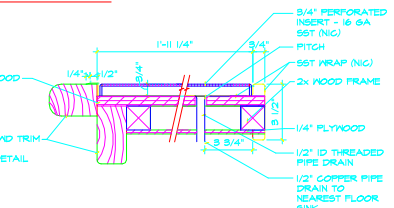
**12 BACK BAR LOWER CABINET-PLASTIC LAMINATE**  
1" = 1'-0"



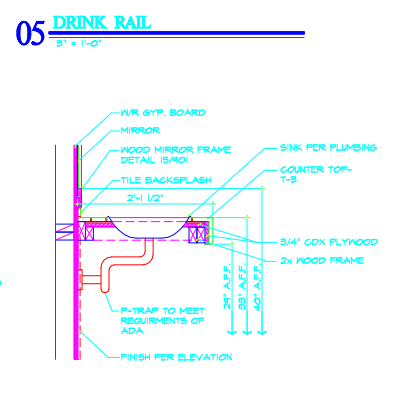
**17 MENU/BREAD BOXES**  
1/2" = 1'-0"



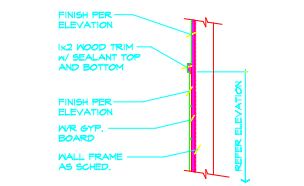
**11 BAR SECTION**  
1" = 1'-0"



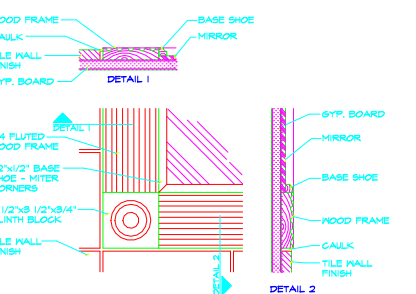
**06 SERVICE BAR TROUGH**  
3" = 1'-0"



**10 TOILET ROOM COUNTER**  
1" = 1'-0"



**16 TILE WAINGSCOT CAP**  
1" = 1'-0"



**15 MIRROR TRIM**  
3" = 1'-0"