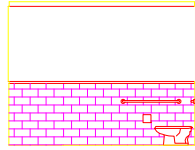
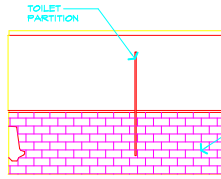


04 TO-GO
1/4"=1'-0"

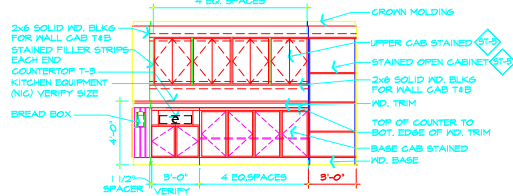


09 RESTROOM WOMEN
1/4"=1'-0"

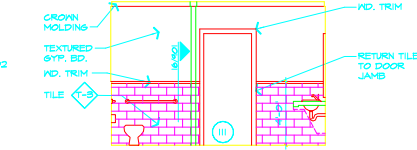
03 TO-GO
1/4"=1'-0"



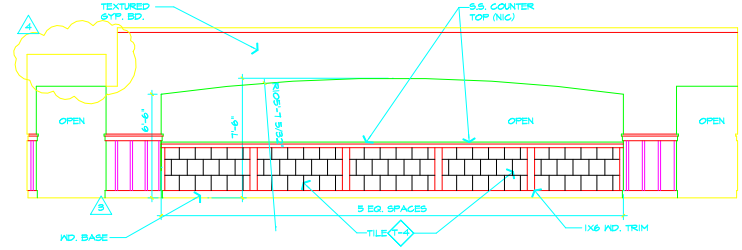
08 RESTROOM MEN
1/4"=1'-0"



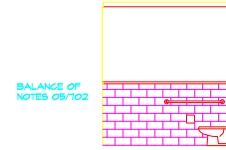
02 TO-GO
1/4"=1'-0"



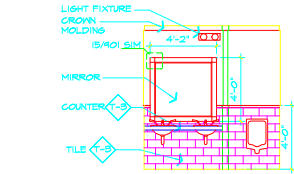
07 RESTROOM MEN
1/4"=1'-0"



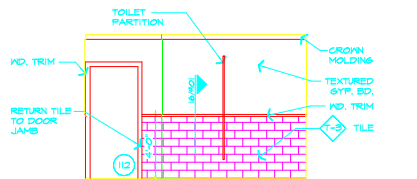
01 EXPO BAR
1/4"=1'-0"



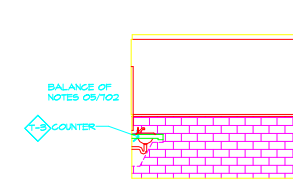
06 RESTROOM MEN
1/4"=1'-0"



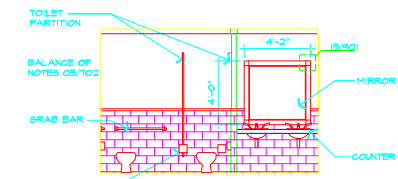
05 RESTROOM MEN
1/4"=1'-0"



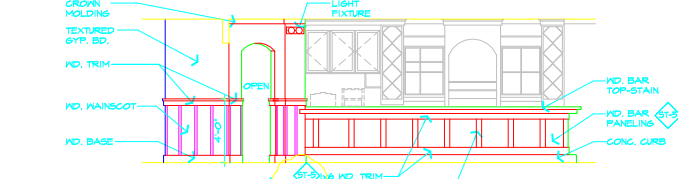
12 RESTROOM WOMEN
1/4"=1'-0"



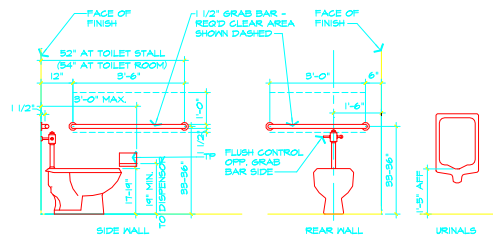
11 RESTROOM WOMEN
1/4"=1'-0"



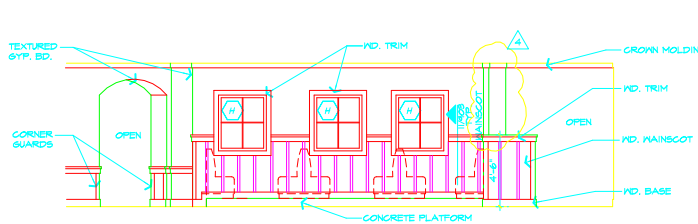
10 RESTROOM WOMEN
1/4"=1'-0"



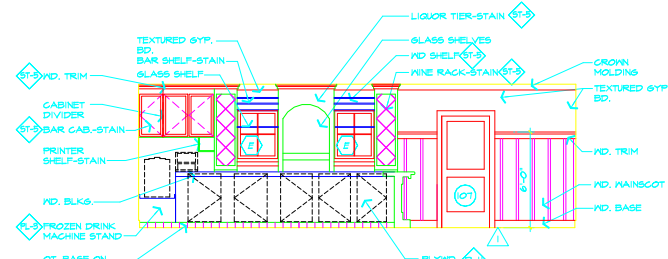
13 BAR DINING 107
1/4"=1'-0"



ADA REFERENCE DETAILS
1/2"=1'-0"



15 DINING 106
1/4"=1'-0"



14 BACK BAR
1/4"=1'-0"

TYPICAL COLORS UNLESS NOTED OTHERWISE

P-5
 TEXTURED GYP. BD.
 MD. MAINSCOT/PANELING
 MD. TRIM/BASE/CROWN HOLDING
 WINDOW INTERIOR
 WINDOW INTERIOR TRIM
 BAR TOP
 BAR FRONT
 BAR DOORS
 EXTERIOR MD. DOORS
 INTERIOR MD. DOORS
 ALL CABINETS/FIREPLACE MANTEL

GENERAL NOTES

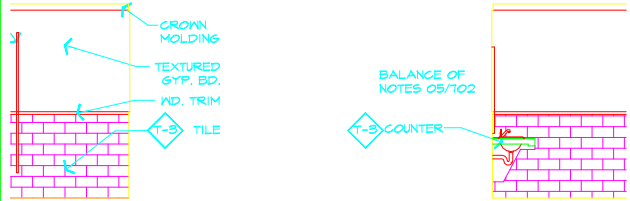
- WHERE POSSIBLE START ALL BATTEN SPACING AT OUTSIDE CORNER
- ALL CROWN MOLDING TO BE 1x4 MD. TRIM UNLESS NOTED OTHERWISE
- ALL MD. BASE TO BE 1x6 MD. TRIM UNLESS NOTED OTHERWISE
- MD. MAINSCOT REFER TO DTL. 11403
- ALL TEXTURED GYP. BD. OUTSIDE CORNERS TO BE BULLNOSE

28 OCT. 2009
 ADDENDUM #1
 16 DEC. 2009
 CITY COMMENTS
 28 JAN. 2004
 OWNER COMMENTS

AREA OF BUILDING:	JOB NO.	DATE:	C.D. REF:	C.L. REF:
	0103			
PROJECT:	SCALE:			SHEET:
CARINO'S PROTO				
8.0 - UPDATE				

1FN

RESTROOM WOMEN



OMEN

11

RESTROOM WOMEN

1/4"=1'-0"

