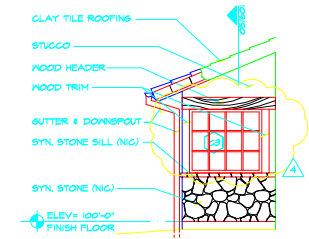
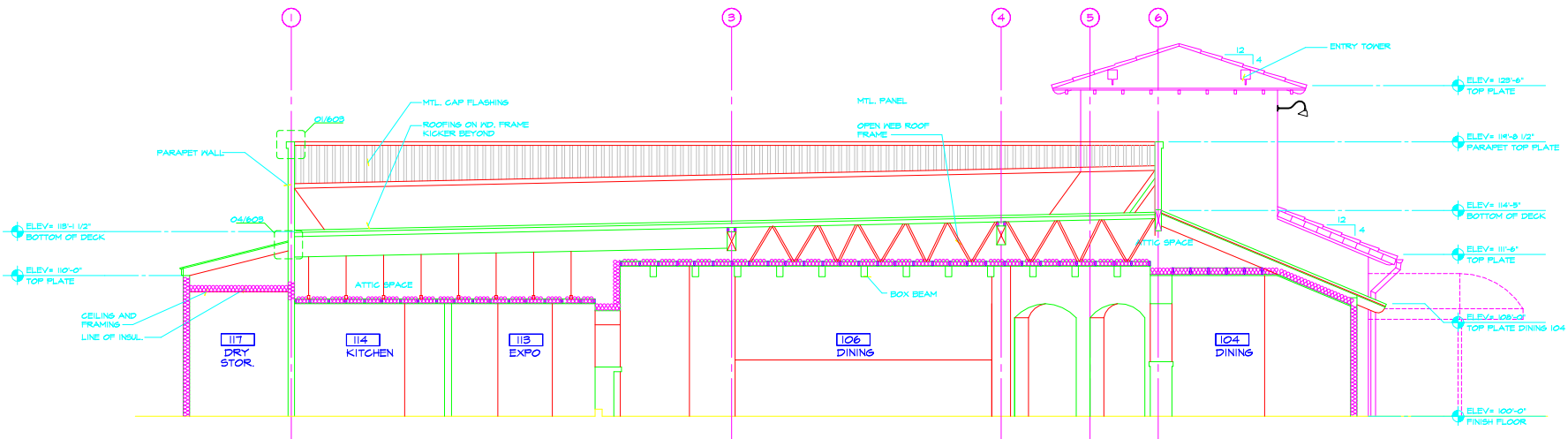


02 TOWER BACKSIDE ELEVATION
1/4"=1'-0"

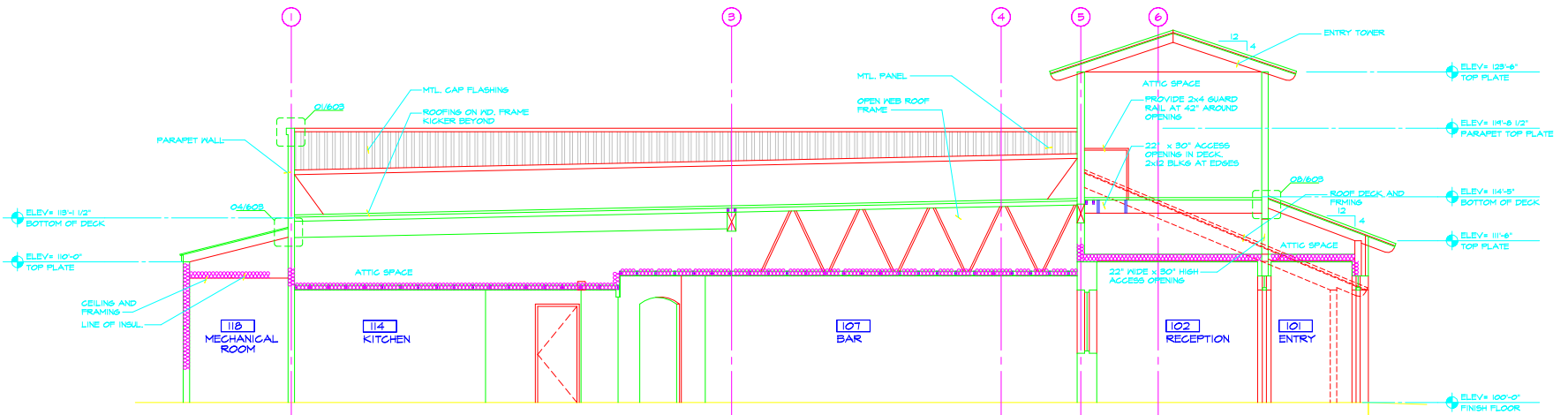


01 PARTIAL ELEVATION
1/4"=1'-0"

12 NOV. 2003
CITY COMMENTS
28 NOV. 2004
OWNER COMMENTS



03 BUILDING SECTION
1/4"=1'-0"



04 BUILDING SECTION
1/4"=1'-0"