

31'-3 3/4"

19'-2"

6'-4" 4'-10" 8'-0 1/2"

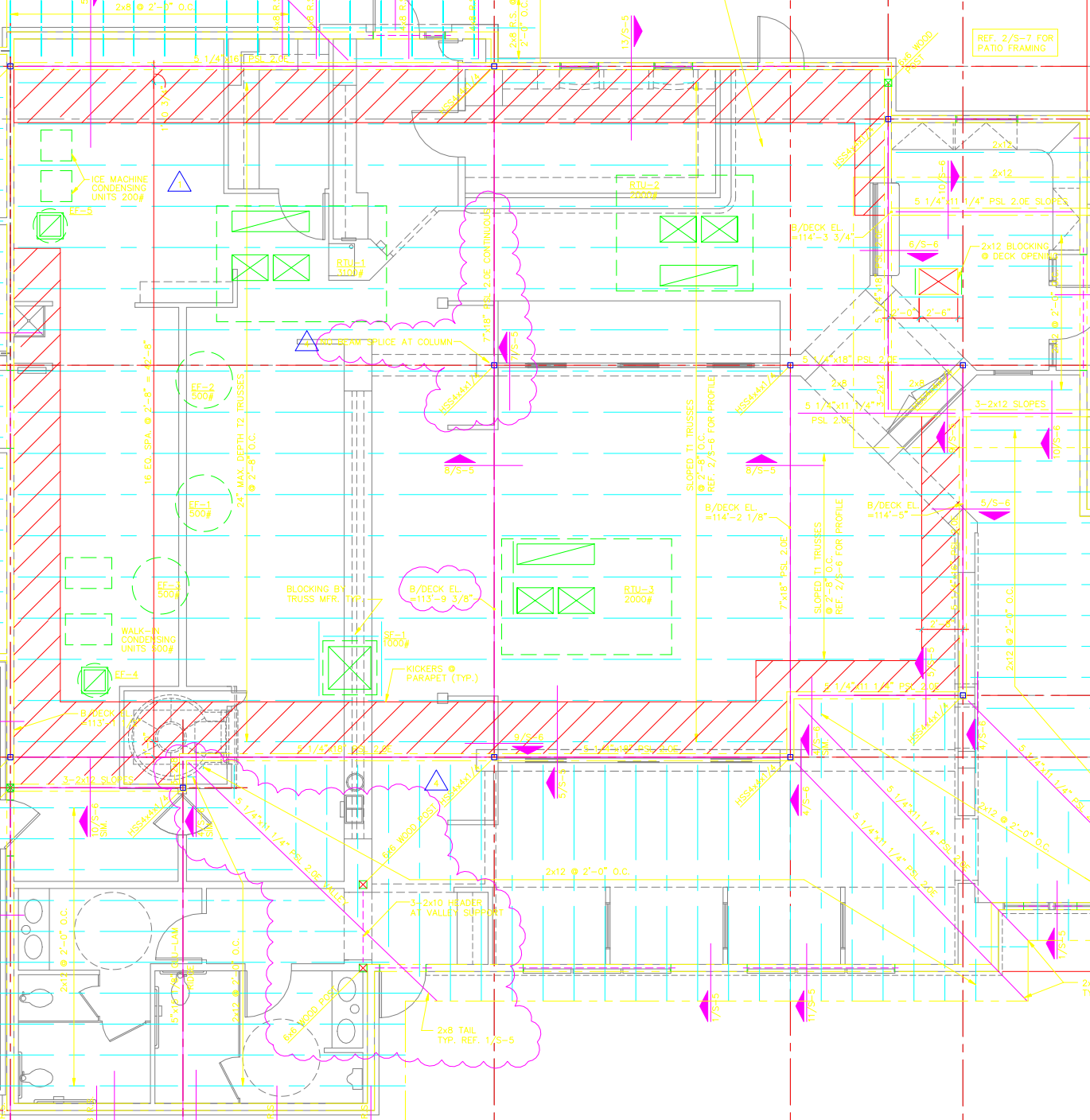
19'-4 1/4"

25'-4 1/2"

1'-11 3/4"

20'-10 3/4"

11'-2"



REF. 2/S-7 FOR PATIO FRAMING

REF. 3/S-6 FOR PARTIAL PLAN @ HIGH ROOF FRAMING

SLOPED T1 TRUSSES @ 2'-8" O.C. REF. 2/S-6 FOR PROFILE

SLOPED T1 TRUSSES @ 2'-6" O.C. REF. 2/S-6 FOR PROFILE

B/DECK EL. = 113'-9 3/8"

B/DECK EL. = 114'-2 1/8"

B/DECK EL. = 114'-5"

CONTINUOUS 3-2x8 HEADER

3-2x10 HEADER AT VALLEY SUPPORT

3-2x10 HEADER

20'-1 3/4"

19'-2"

11'-2"

13'-10 5/8"

