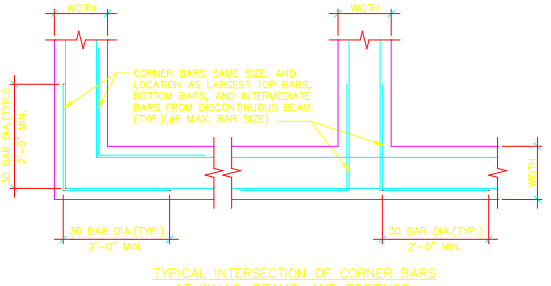
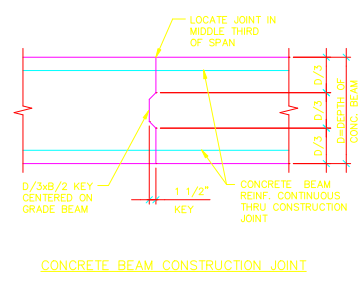


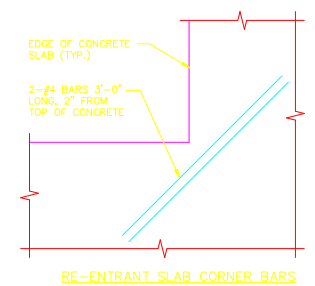
**1 TYPICAL SECTION**  
SCALE: NO SCALE



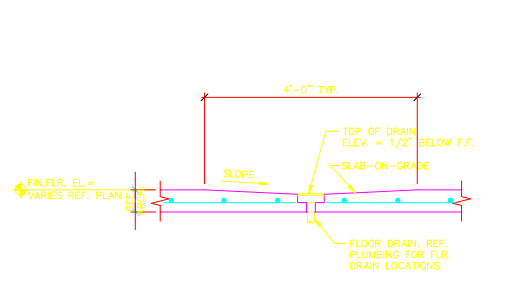
**2 TYPICAL DETAIL**  
SCALE: NO SCALE



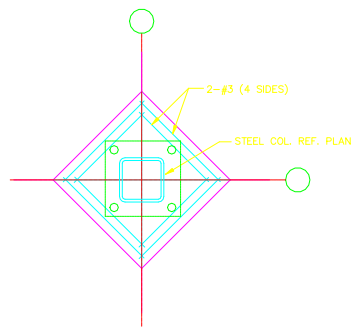
**3 TYPICAL SECTION**  
SCALE: NO SCALE



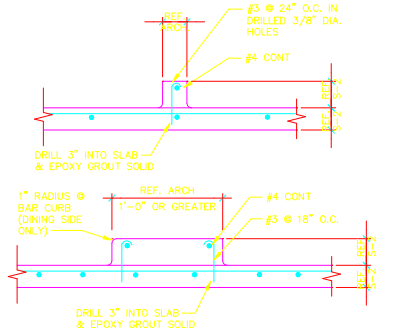
**4 TYPICAL DETAIL**  
SCALE: NO SCALE



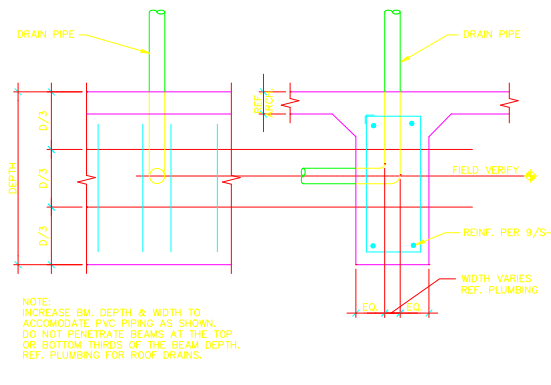
**5 TYPICAL DRAIN DETAIL**  
SCALE: NO SCALE



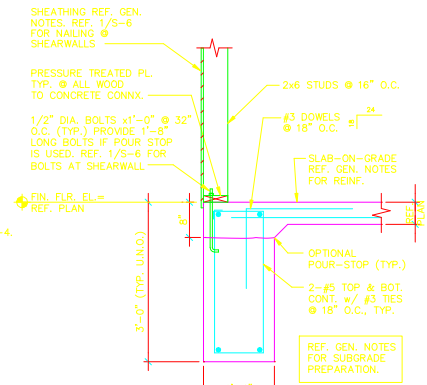
**6 TYP. SLAB LEAVE-OUT AT INTERIOR COLUMN**  
SCALE: NO SCALE



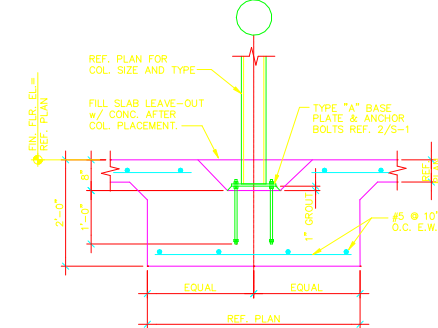
**7 TYPICAL CURB DETAIL**  
SCALE: NO SCALE



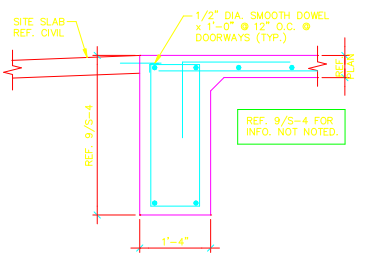
**8 TYP. GRADE BM. PENETRATION**  
SCALE: NO SCALE



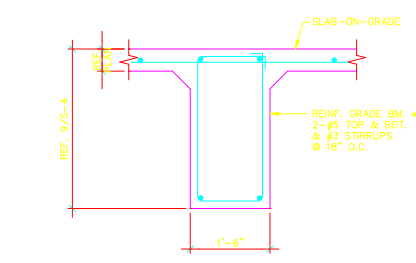
**9 SECTION**  
SCALE: 3/4"=1'-0"



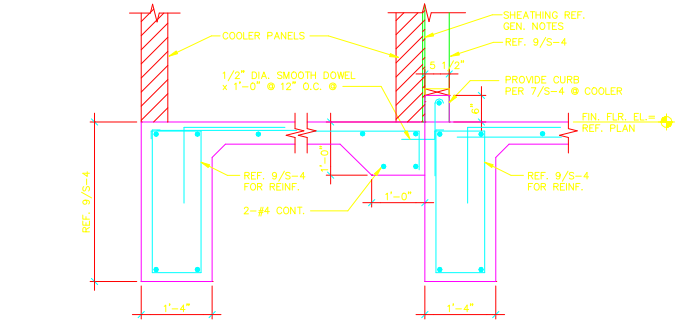
**10 SECTION**  
SCALE: 3/4"=1'-0"



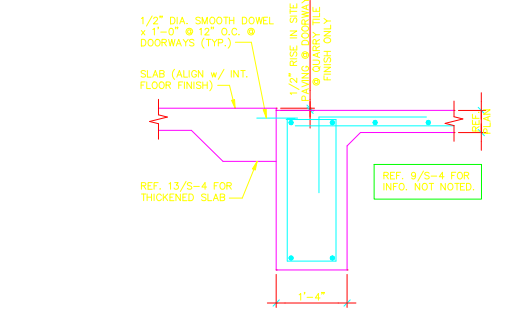
**11 SECTION**  
SCALE: 3/4"=1'-0"



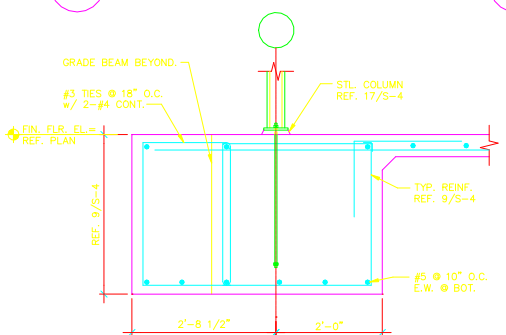
**12 SECTION**  
SCALE: 3/4"=1'-0"



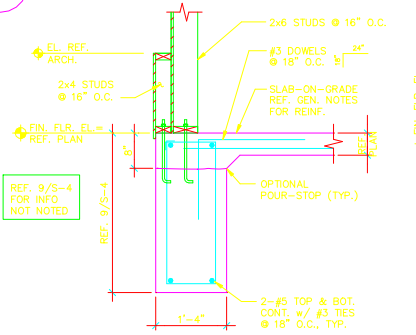
**13 SECTION**  
SCALE: 3/4"=1'-0"



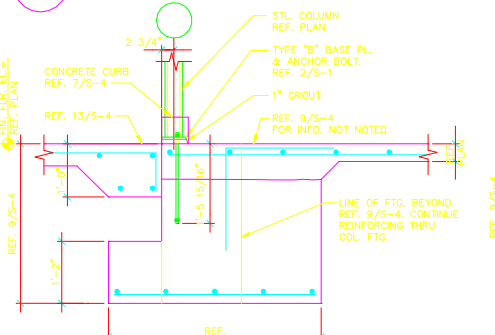
**14 SECTION**  
SCALE: 3/4"=1'-0"



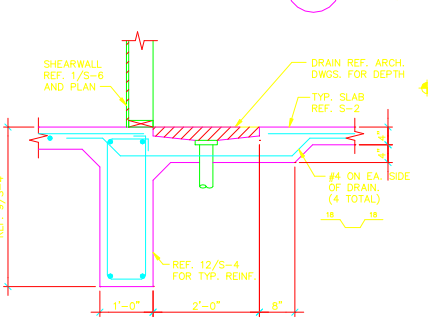
**15 SECTION**  
SCALE: 3/4"=1'-0"



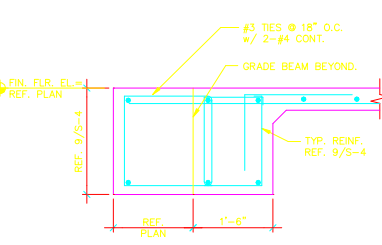
**16 SECTION**  
SCALE: 3/4"=1'-0"



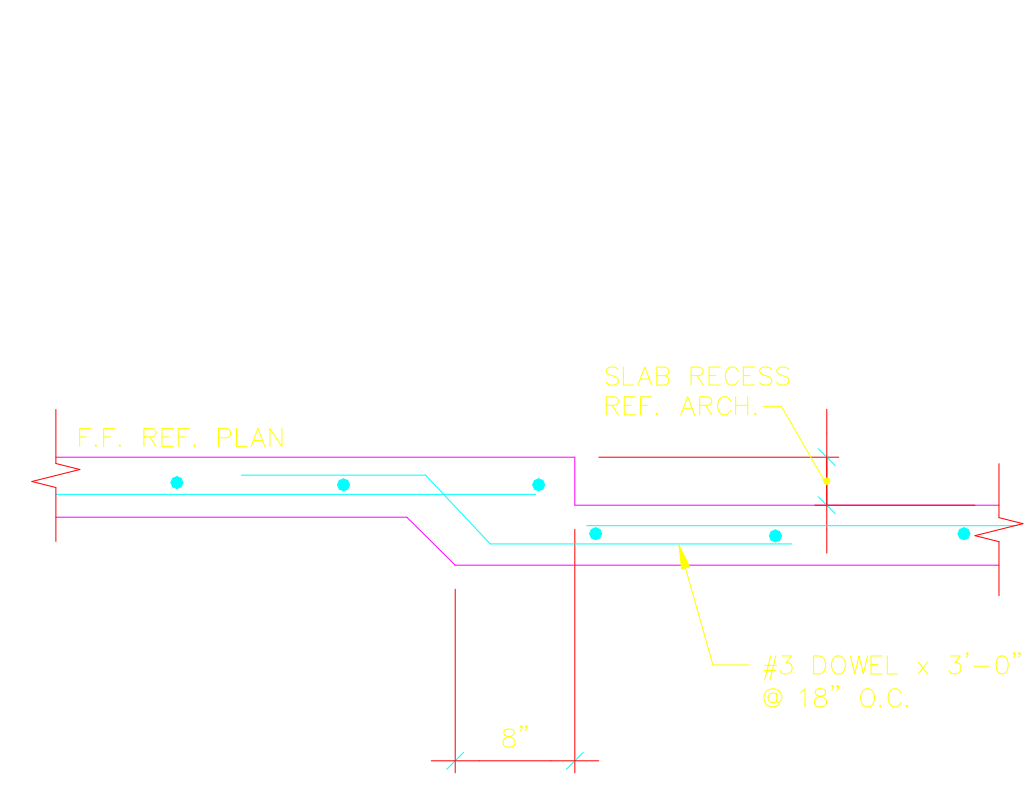
**17 SECTION**  
SCALE: 3/4"=1'-0"



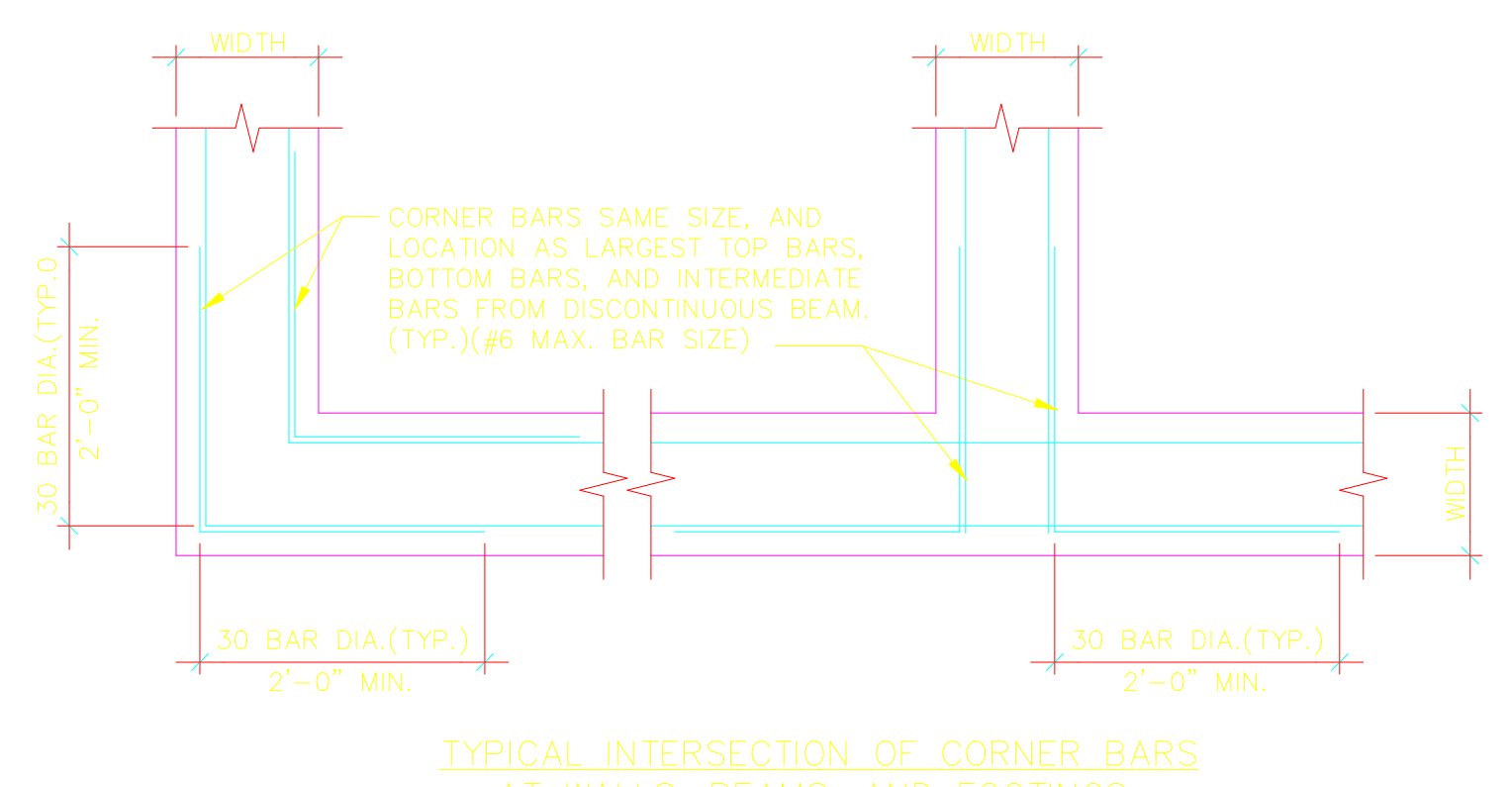
**18 RECESS AT MOP SINK**  
SCALE: 3/4"=1'-0"



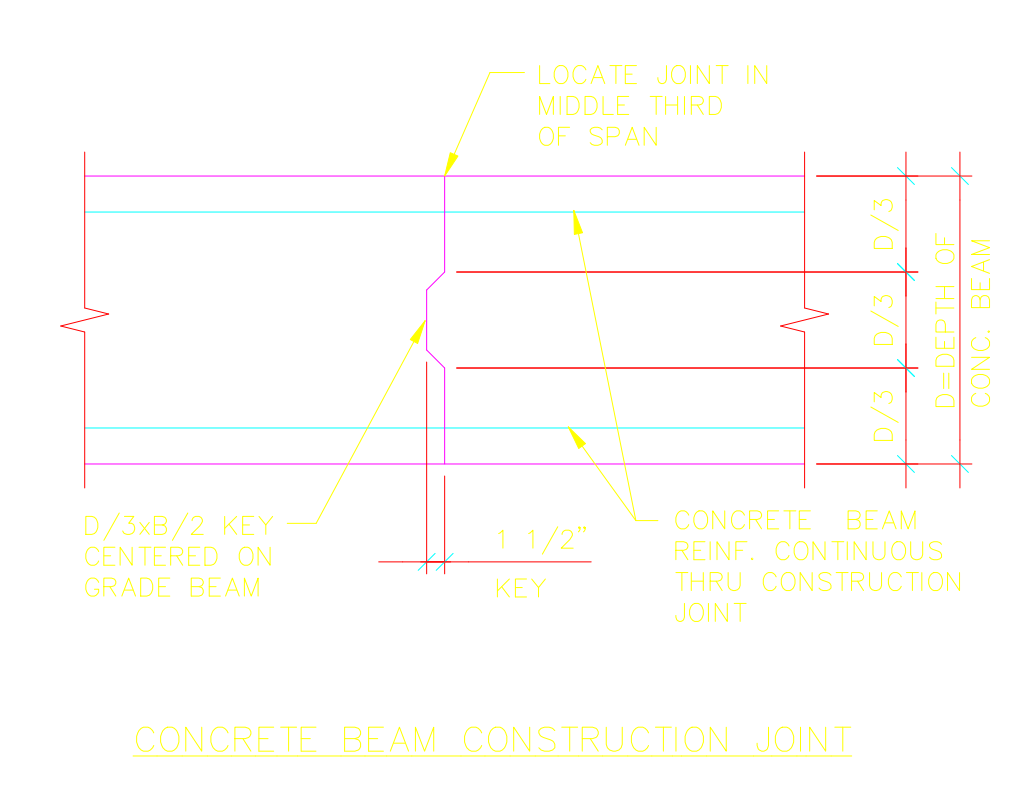
**19 SECTION**  
SCALE: 3/4"=1'-0"



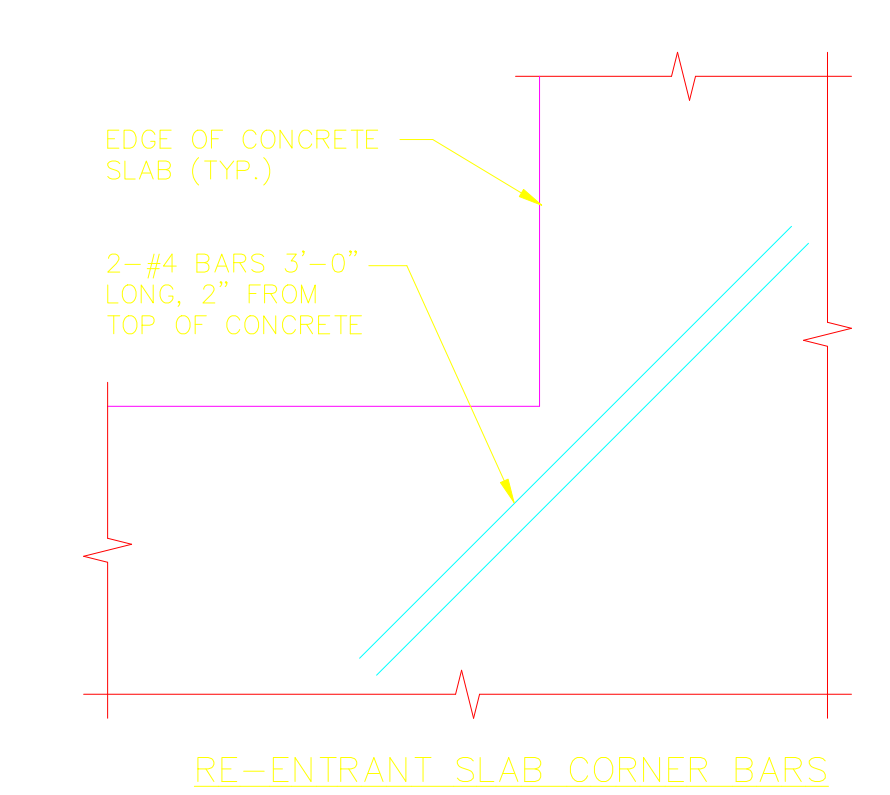
**1 TYPICAL SECTION**  
SCALE: NO SCALE



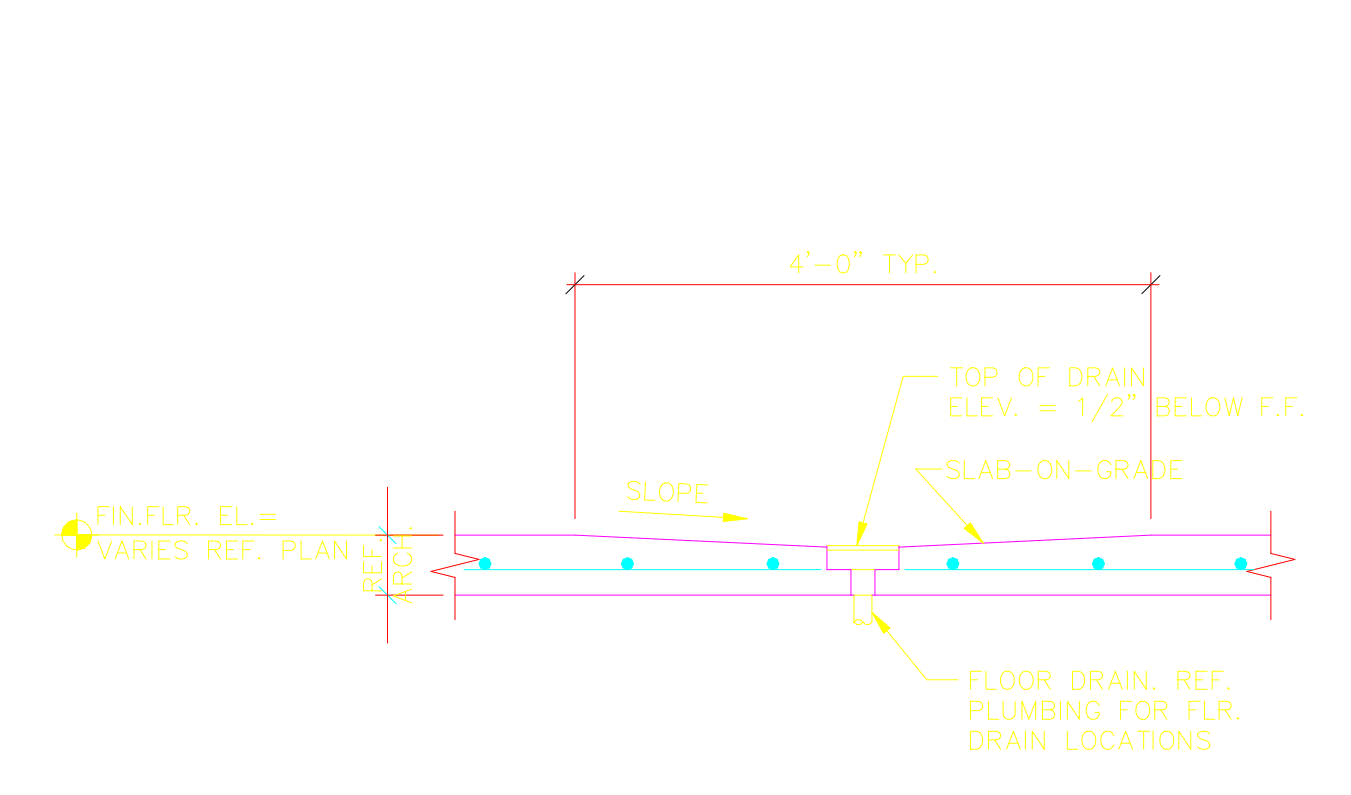
**2 TYPICAL DETAIL**  
SCALE: NO SCALE



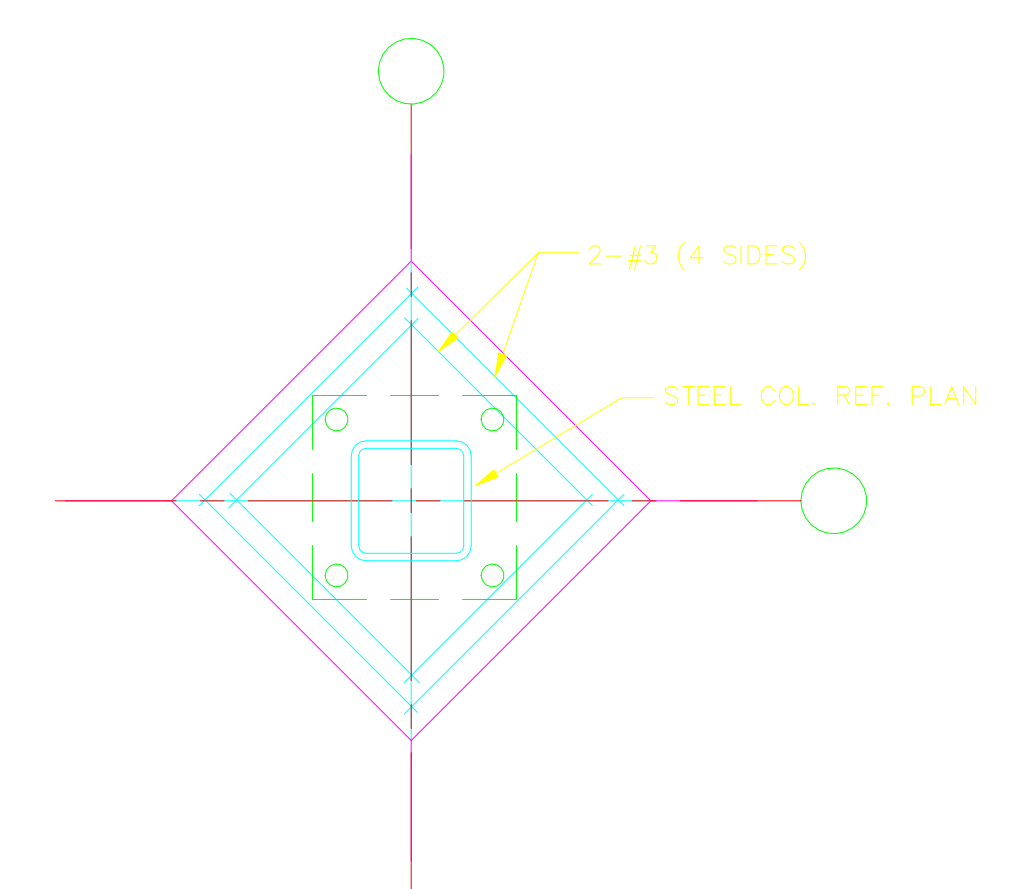
**3 TYPICAL SECTION**  
SCALE: NO SCALE



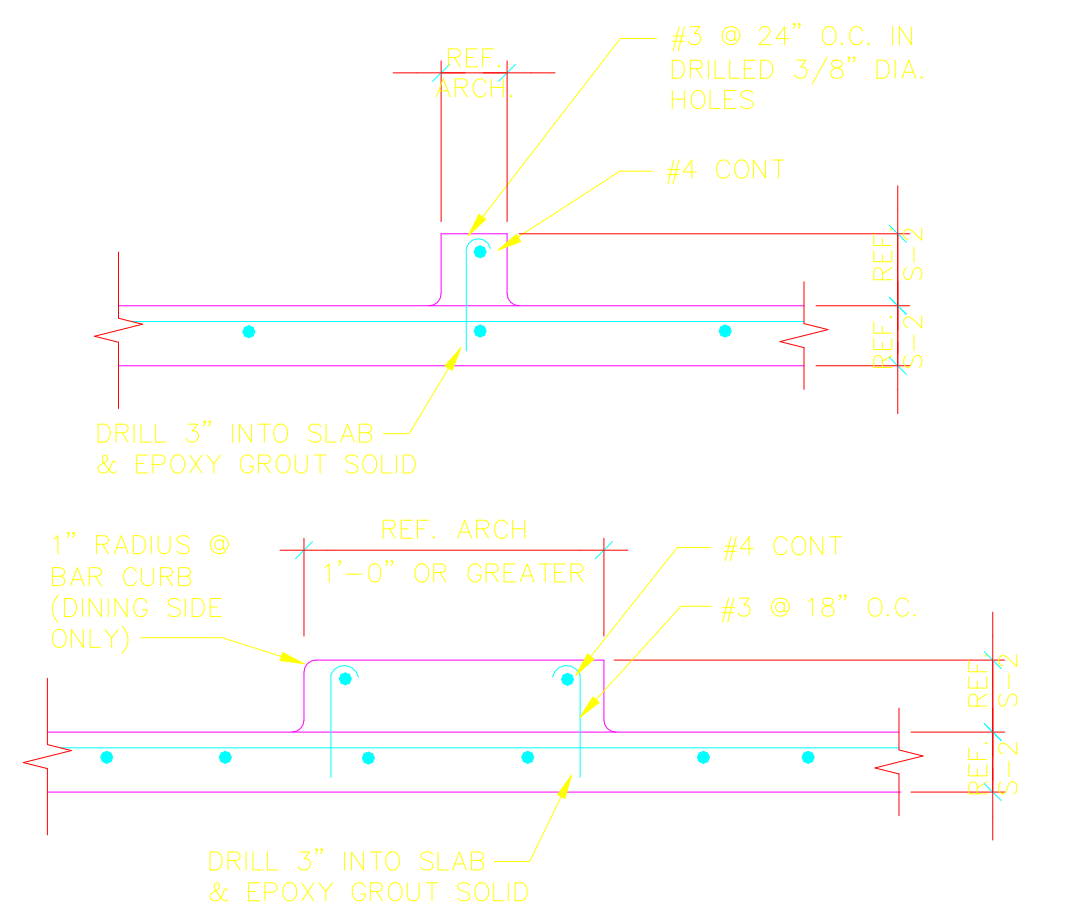
**4 TYPICAL DETAIL**  
SCALE: NO SCALE



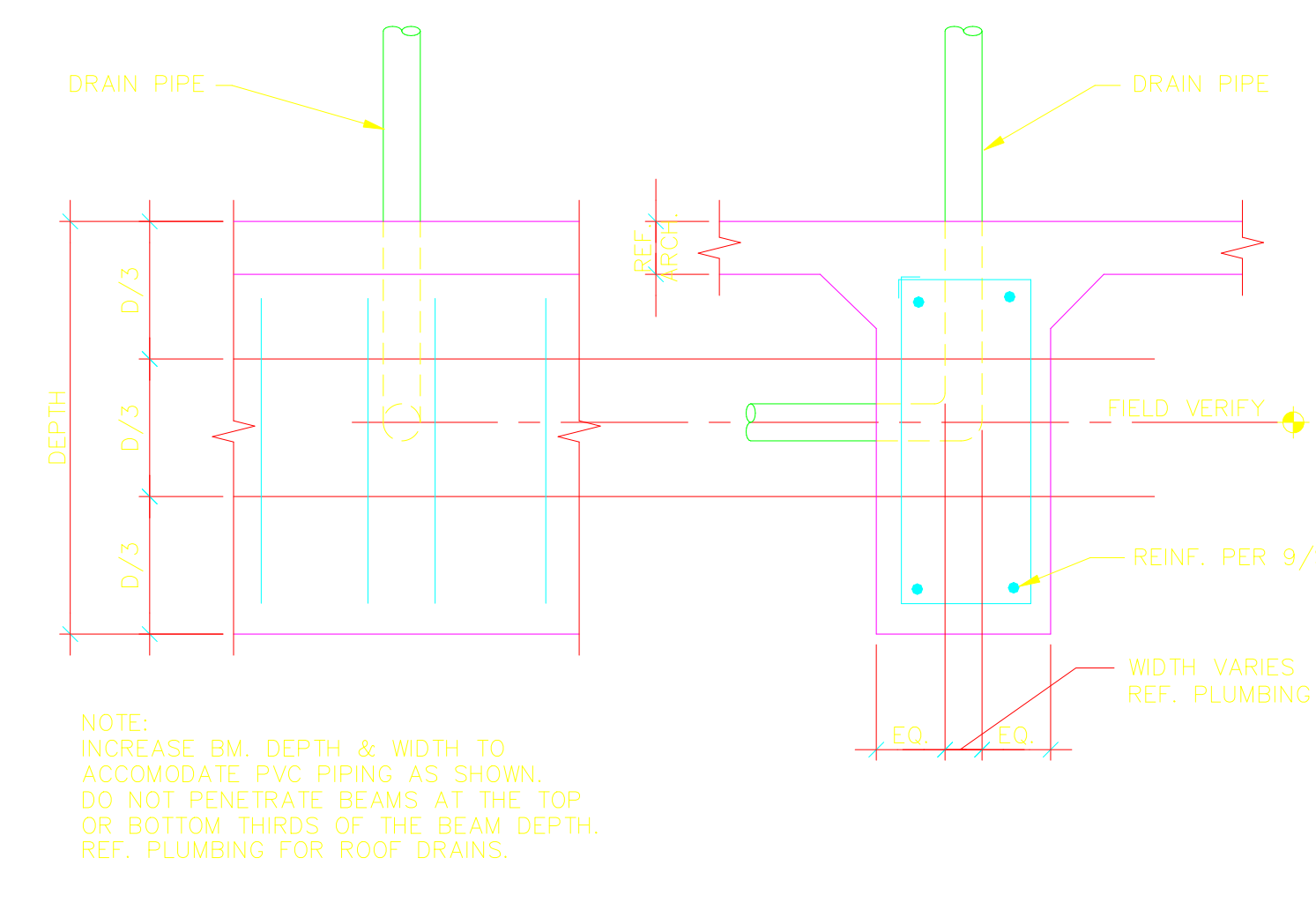
**5 TYPICAL DRAIN DETAIL**  
SCALE: NO SCALE



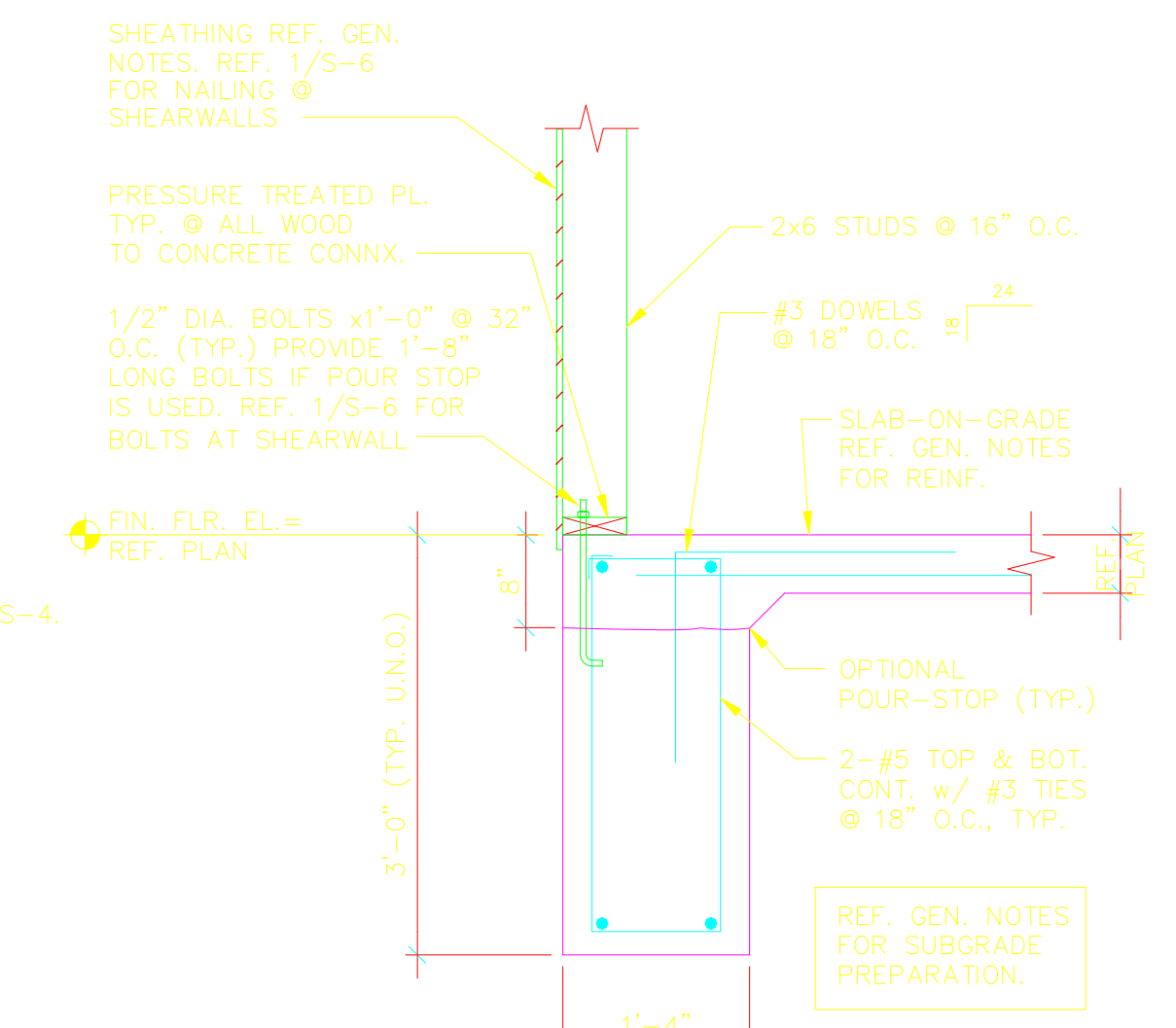
**6 TYP. SLAB LEAVE-OUT AT INTERIOR COLUMN**  
SCALE: NO SCALE



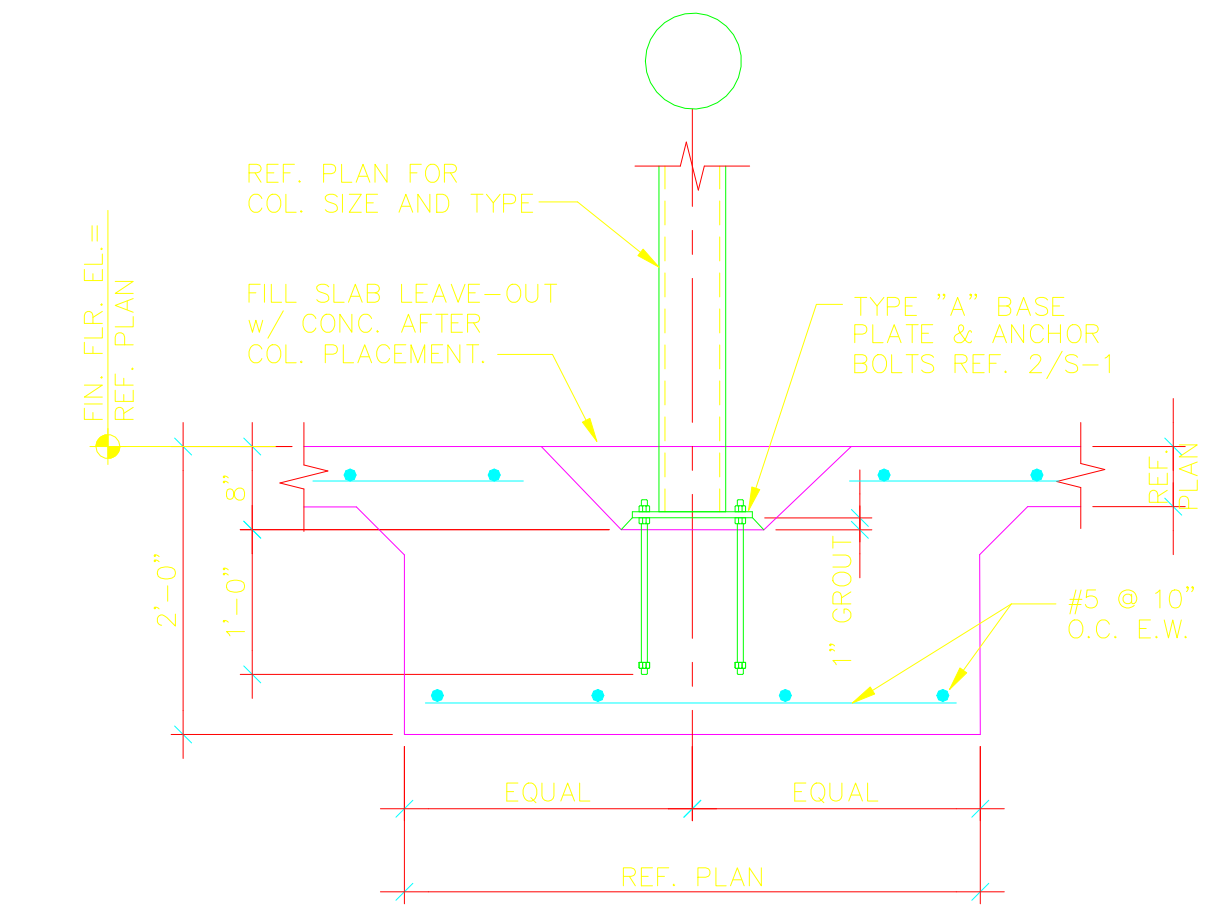
**7 TYPICAL CURB DETAIL**  
SCALE: NO SCALE



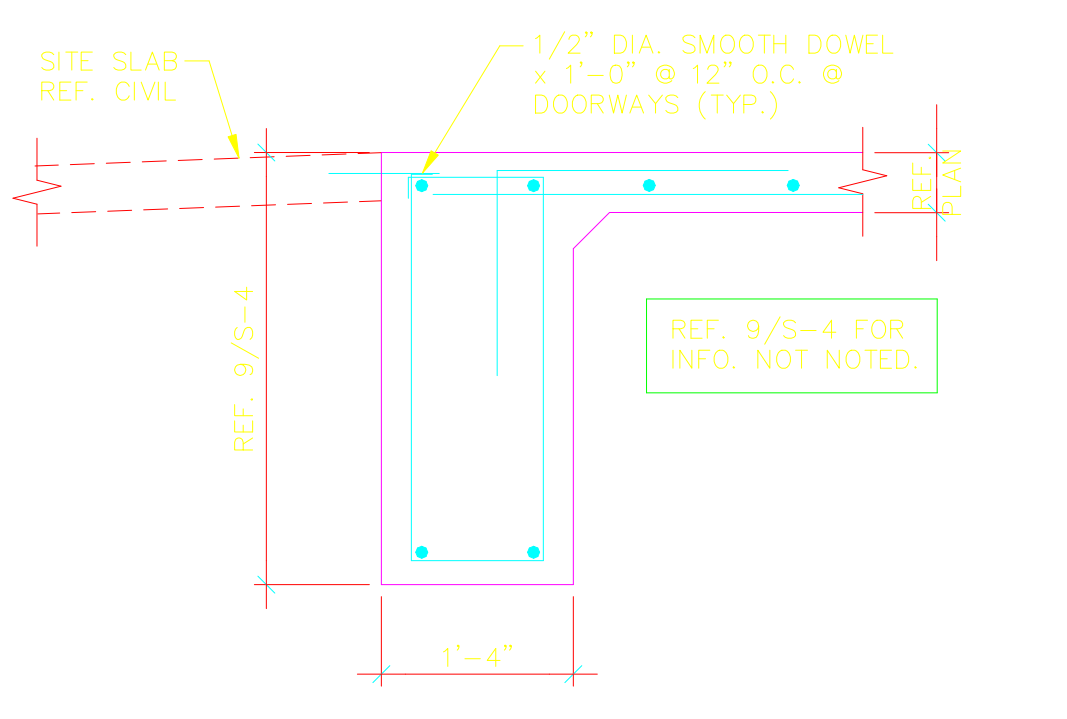
**8 TYP. GRADE BM. PENETRATION**  
SCALE: NO SCALE



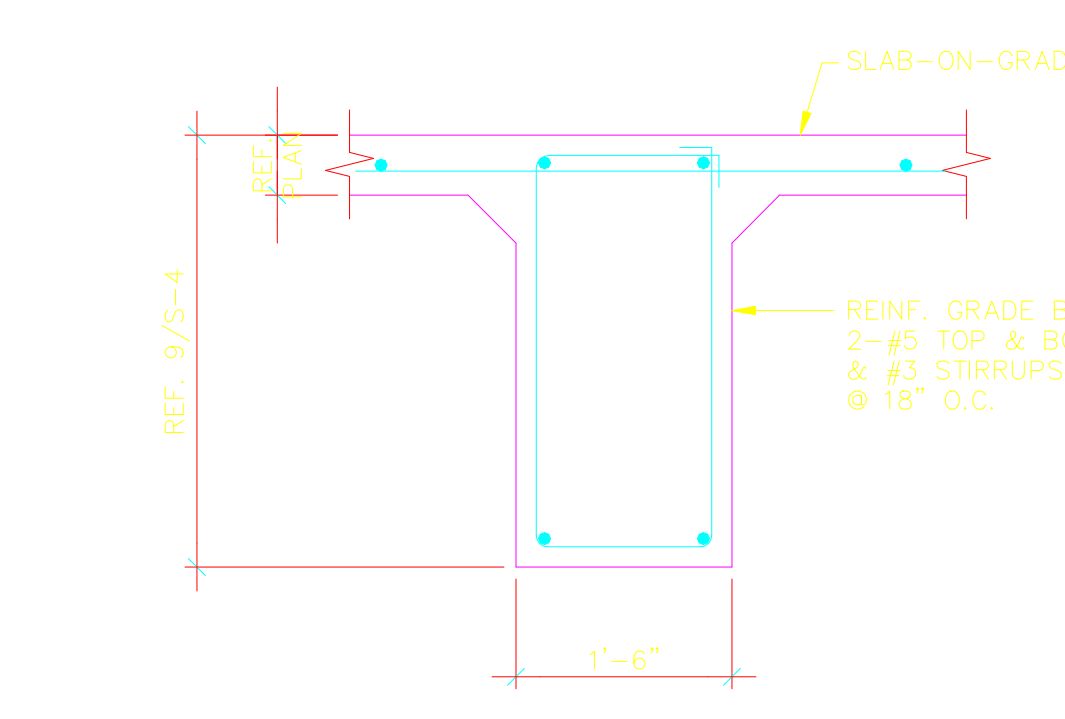
**9 SECTION**  
SCALE: 3/4"=1'-0"



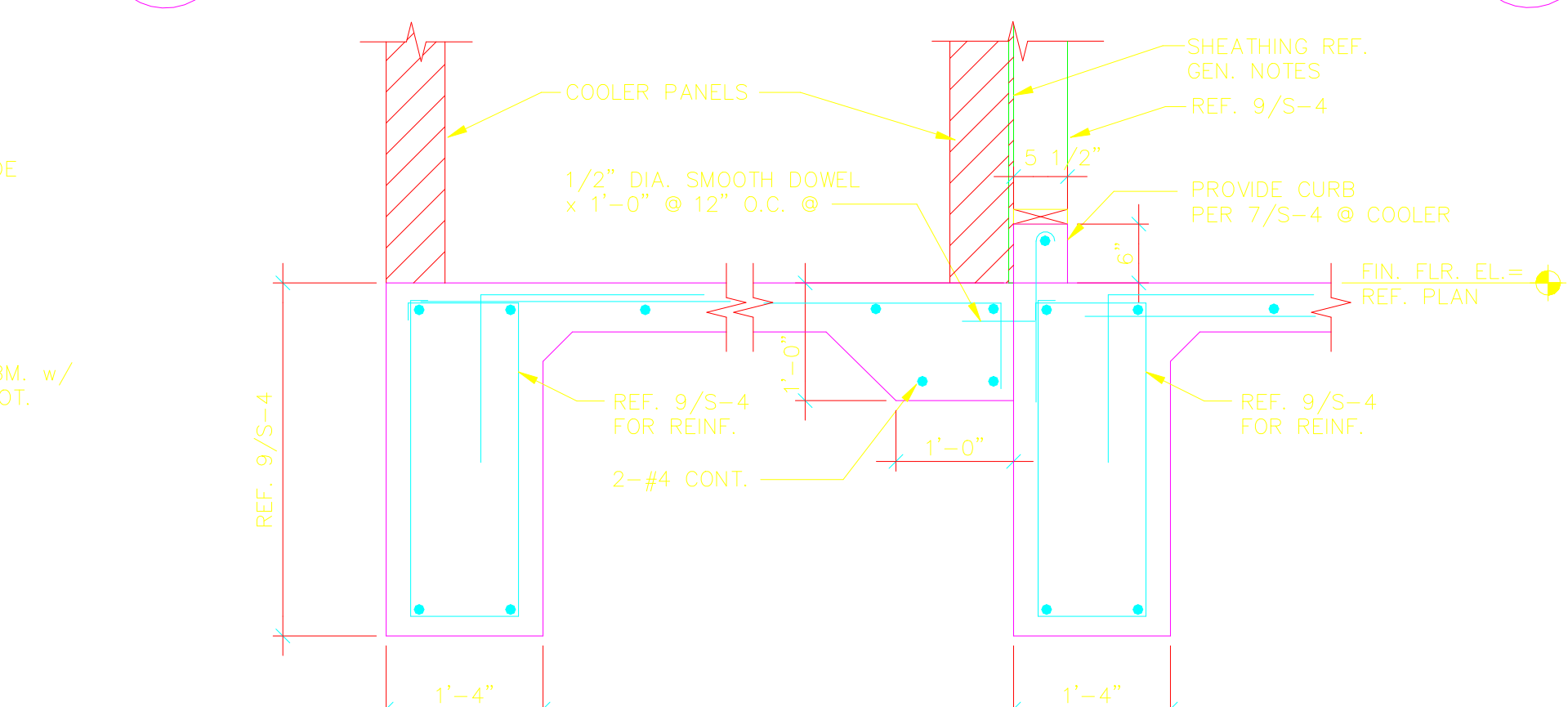
**10 SECTION**  
SCALE: 3/4"=1'-0"



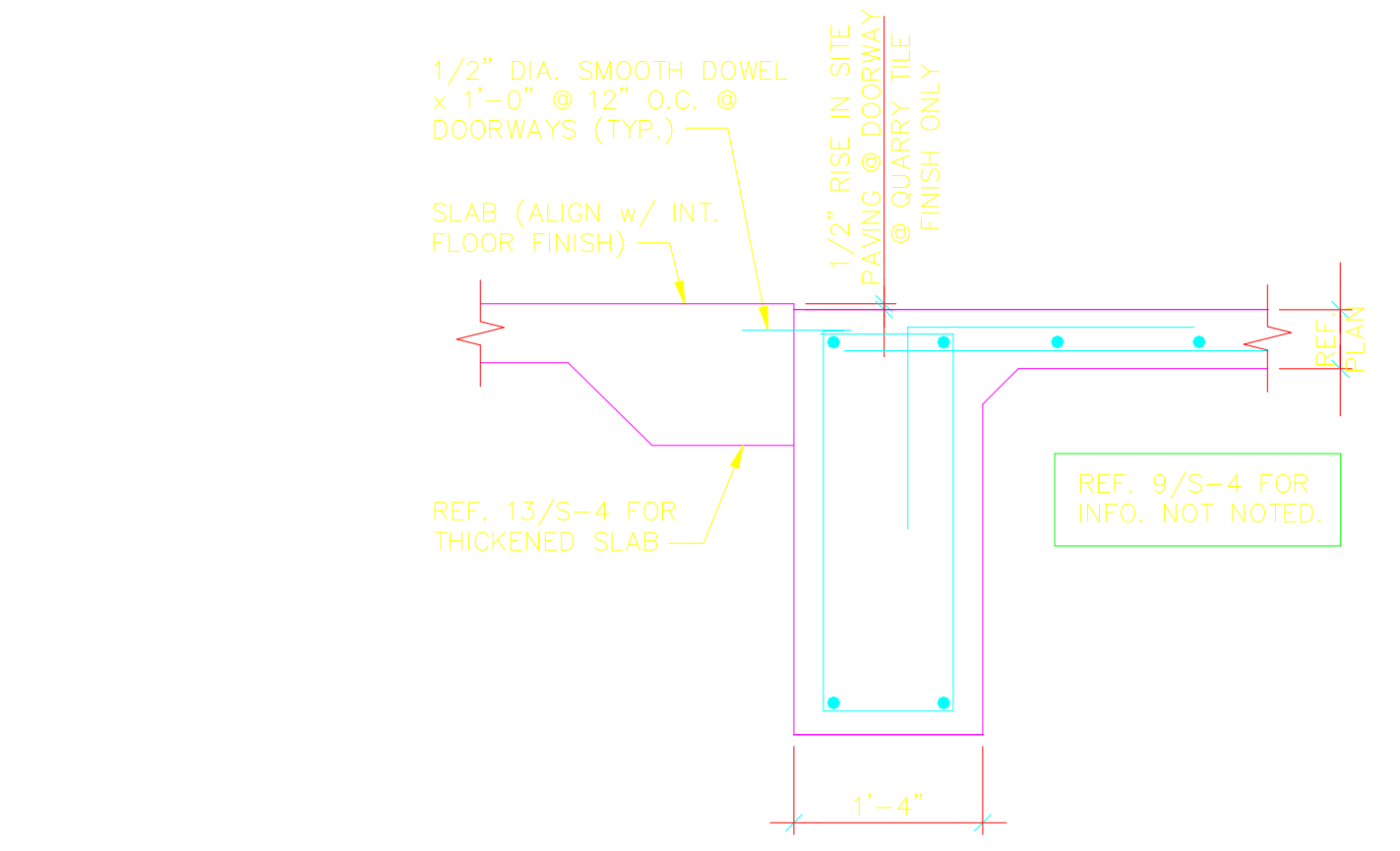
**11 SECTION**  
SCALE: 3/4"=1'-0"



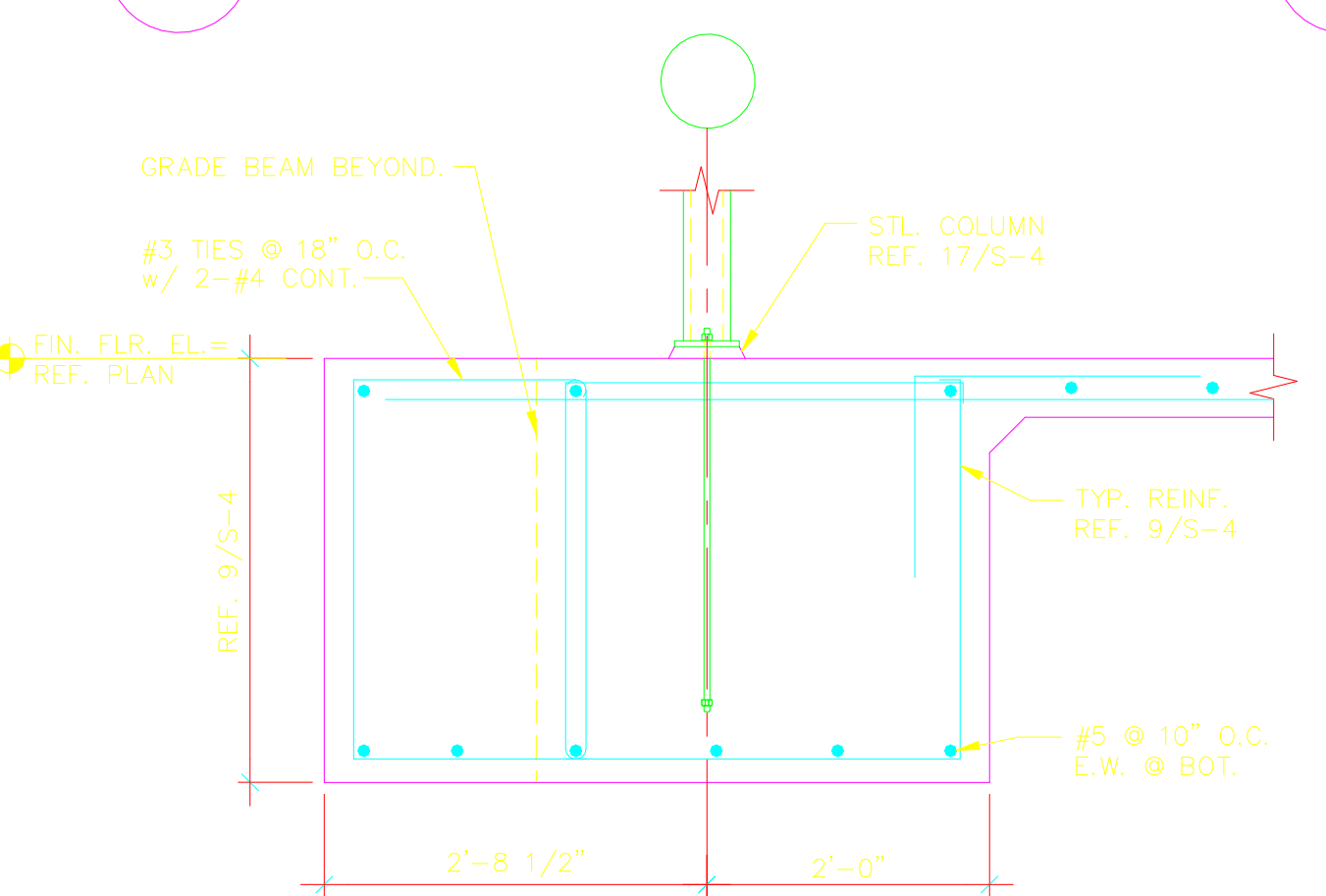
**12 SECTION**  
SCALE: 3/4"=1'-0"



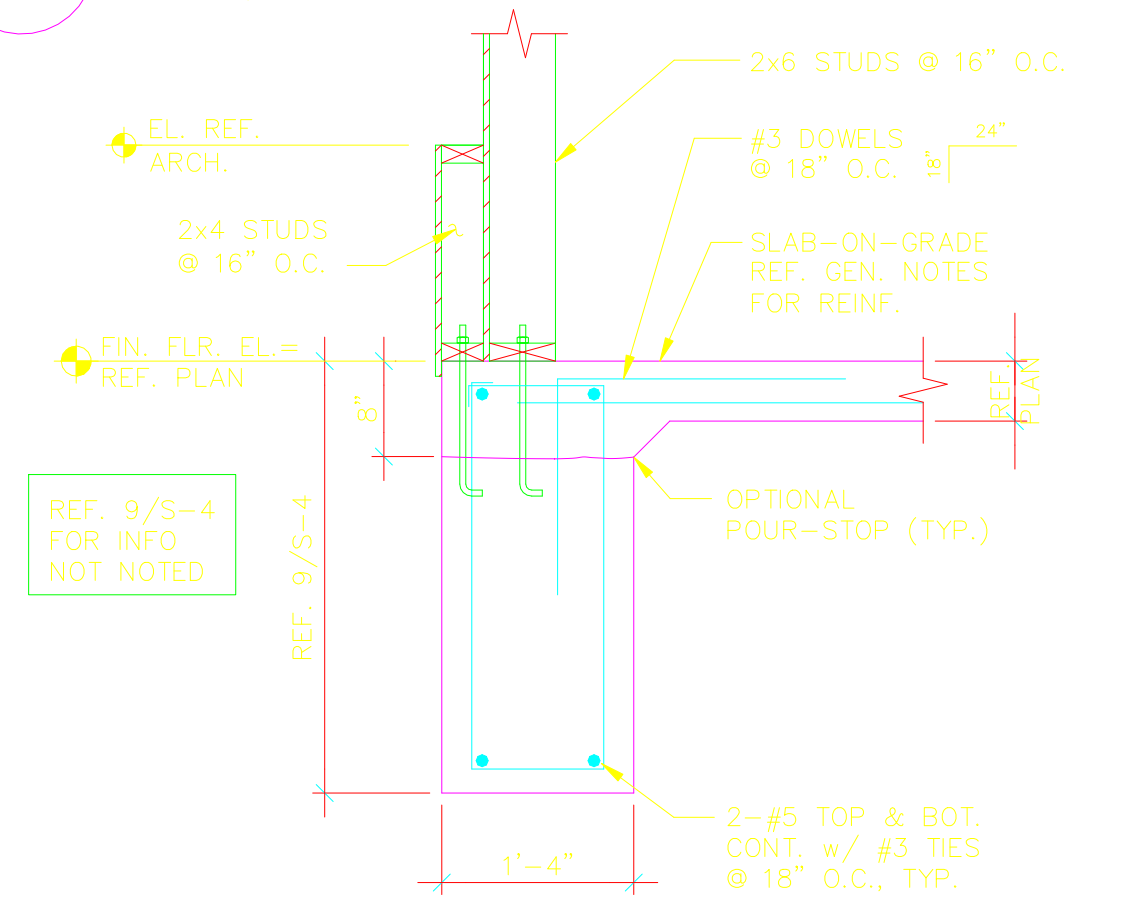
**13 SECTION**  
SCALE: 3/4"=1'-0"



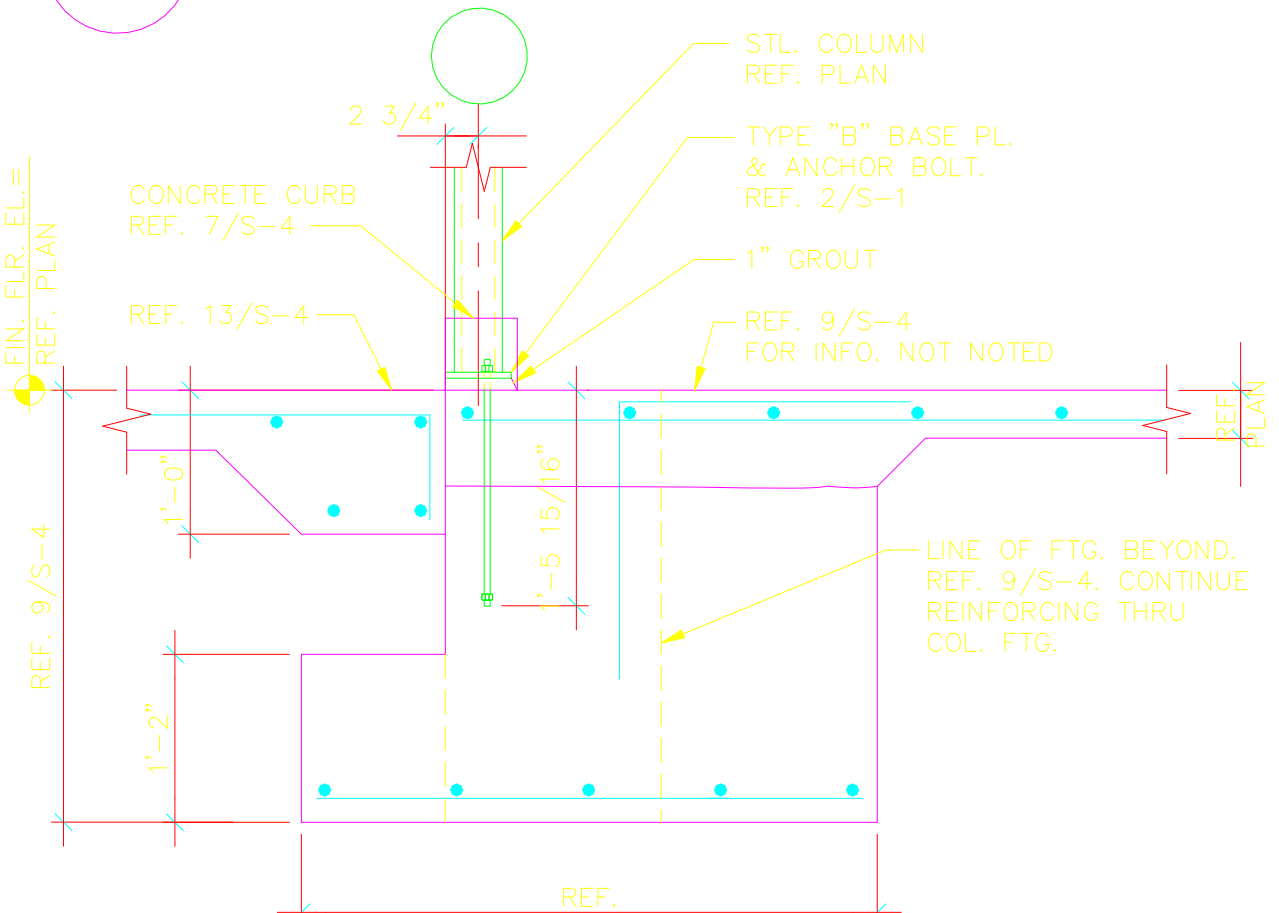
**14 SECTION**  
SCALE: 3/4"=1'-0"



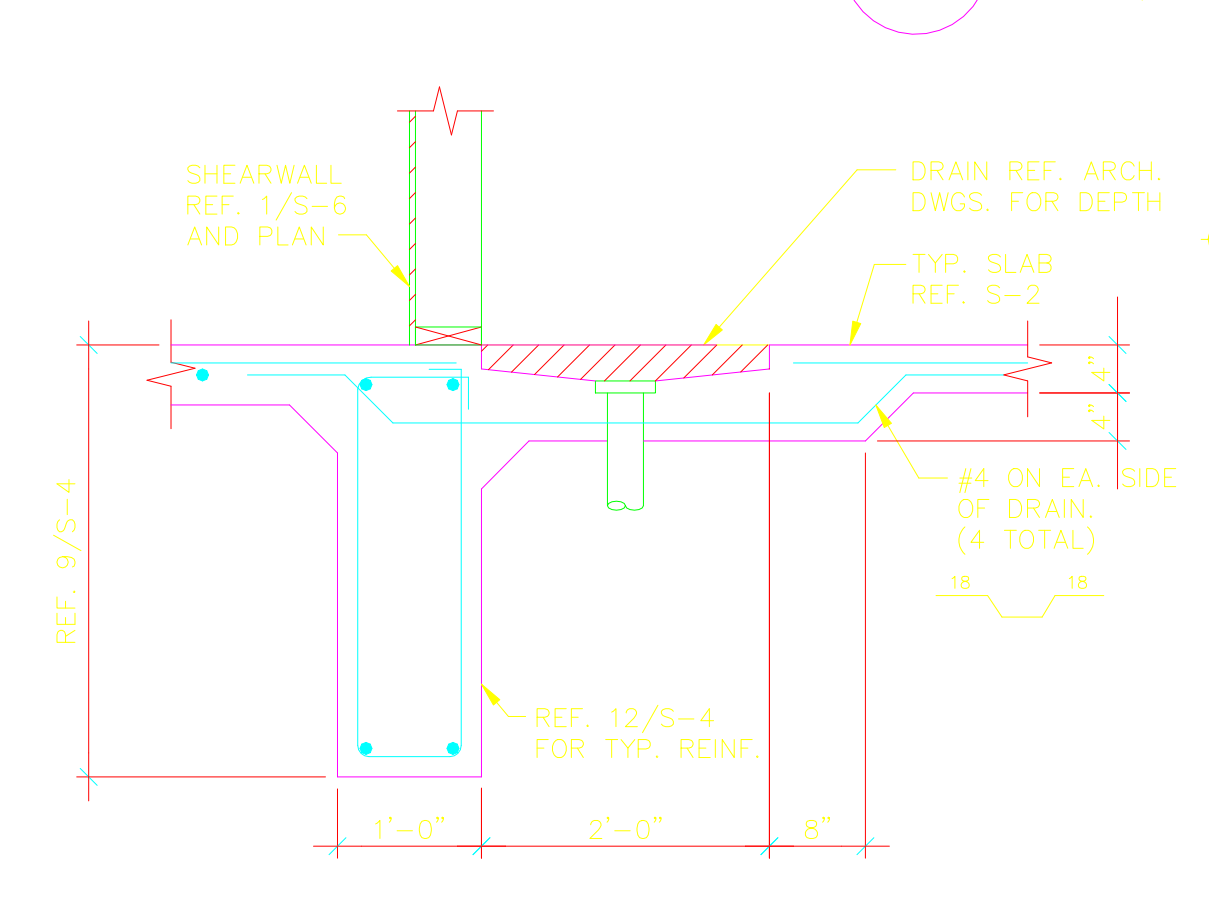
**15 SECTION**  
SCALE: 3/4"=1'-0"



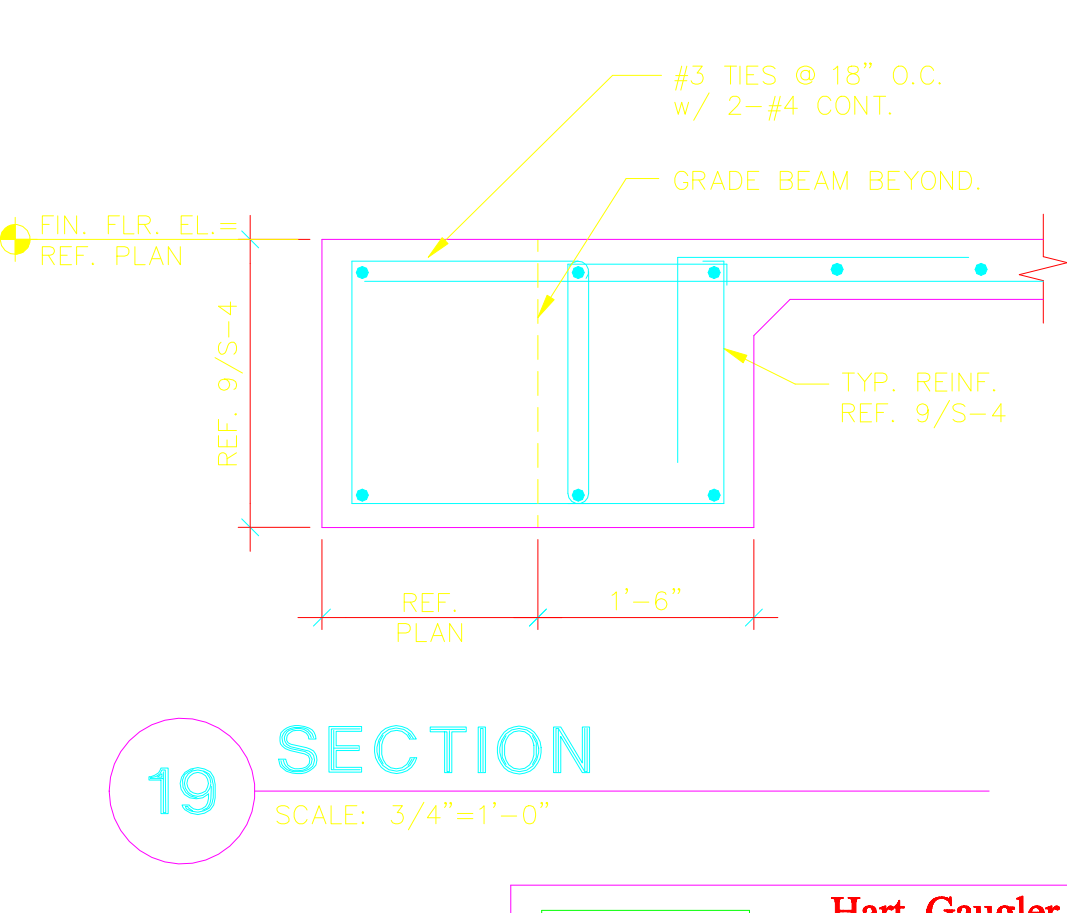
**16 SECTION**  
SCALE: 3/4"=1'-0"



**17 SECTION**  
SCALE: 3/4"=1'-0"



**18 RECESS AT MOP SINK**  
SCALE: 3/4"=1'-0"



**19 SECTION**  
SCALE: 3/4"=1'-0"

**HGA** Hart, Gauger & Associates, Inc.  
Structural Engineering Services  
12801 N. Central Expressway, #1400  
Dallas, TX 75243  
972-239-5111 / 972-239-5055 (Fax)

PERMIT ISSUE:

22 SEPT. 2003

REVISIONS:

28 OCT. 2003	ADDENDUM #1
12 NOV. 2003	CITY COMMENTS
18 DEC. 2003	CITY COMMENTS
28 JAN. 2004	OWNER COMMENTS

PROTO 90  
HWY 287 AT PEARL RD.  
CASA GRANDE, AZ



nca Architecture  
6500 Greenville Ave  
Suite 307  
Dallas, TX 75206  
214.361.9901  
Fax 361.9906

SHEET NO: S-4