

1 TRASH ENCLOSURE
SCALE: 1/4" = 1'-0"

3 DTLS @ CURB/SIDE WALK
SCALE: 1" = 1'-0"

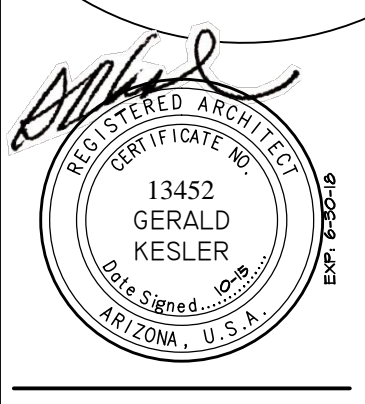
10 TYP. SCREEN WALL
SCALE: 3/4" = 1'-0"

12 JOINT DTLS
SCALE: 1 1/2" = 1'-0"

13 DECORATIVE COLORED CONG. CROSSWALK
SCALE: 1 1/2" = 1'-0"

COLOR/MATERIAL SCHEDULE	
MATERIAL FINISH KEY	COLOR KEY
1. 8x8x16 SMOOTH FACE CMU	A. TERRA BROWN "SUPERLITE"
2. 4x4x8 SMOOTH FACE	B. COGO BROWN "SUPERLITE"
3. 8x4x16 SMOOTH FACE "TRENDSONE"	C. PEBBLE BEACH "TRENDSONE"

GERALD R. KESLER, INC.
ARCHITECTS
13452 E. DRAFFT LANE
PHOENIX, AZ 85026
PHONE: 602-725-1000
FAX: 602-606-2100
EMAIL: GKESLER@GRI.COM

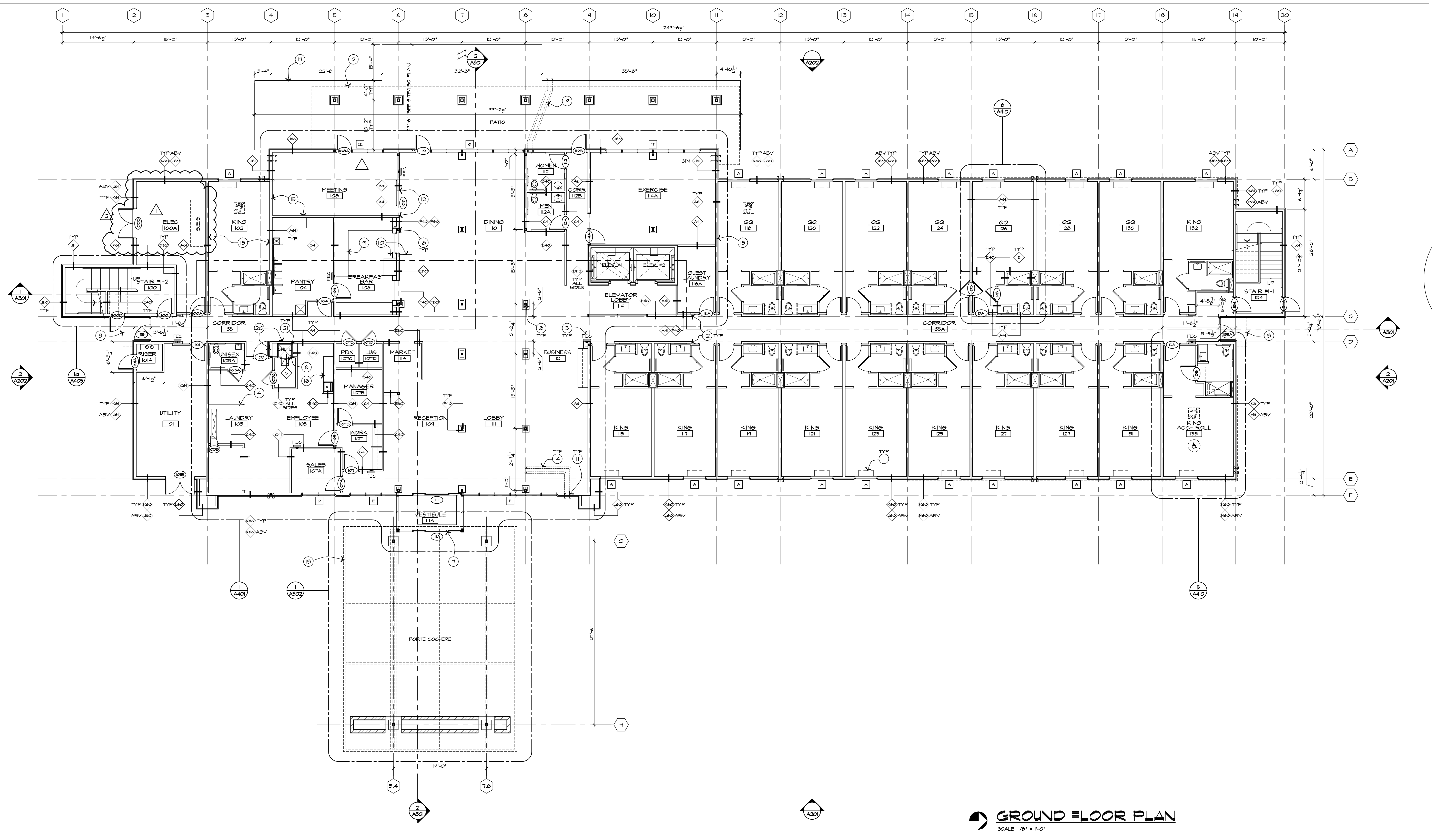


INN CODE # 16711-PHACT
1110 S. Arizona Ave.
Chandler, Arizona, 85226



JOB NUMBER
1401
DATE
07-24-2015
REVISION
1st City Comments
09-11-2015

SHEET TITLE
TYPICAL SITE DETAILS
SHEET NUMBER
SD501



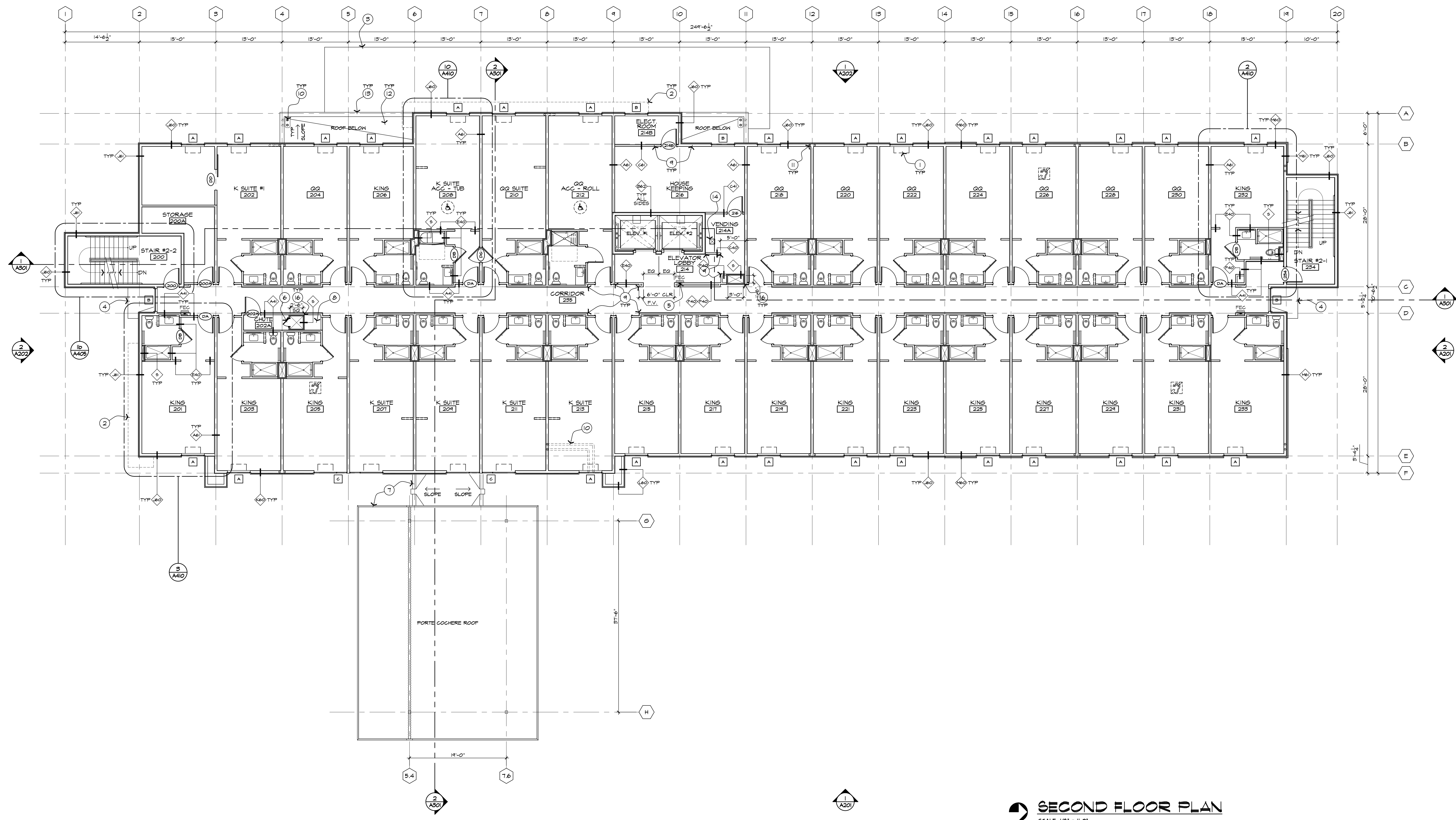
GROUND FLOOR PLAN
 SCALE: 1/8" = 1'-0"

GENERAL NOTES

- A. GRIDS & DIMENSING WALLS ARE TO THE CENTERLINE OF 2x6 STUDS (LOAD BEARING WALLS), UNO. GRIDS & EXTERIOR PERIMETER WALLS ARE TO THE OUTSIDE FACE OF 2x6 STUDS, UNO.
- B. DIMENSIONS ARE TO THE FACE OF STUDS, UNO.
- C. EDGE OF CONG. SLAB AT EXTERIOR WALL SHALL BE EXTENDED BEYOND FACE OF STUDS & COMPENSATED FOR THE THICKNESS OF EXTERIOR SHEATHING MATERIAL. SEE WALL SECTIONS, GSN & STRUCT. DWGS.
- D. GRIDS & DIMENSIONS ARE TO CENTERLINE OF STL. COLUMN, UNO.
- E. SEE ENLARGED PLANS FOR ADDITIONAL INFORMATION NOT SHOWN HERE.
- F. SEE SHEET 6002 FOR GUEST ROOMS MATRIX, SYMBOLS & ABBREVIATIONS.
- G. SEE SHEET 6003 FOR PROJECT DATA, CODE INFORMATION & FIRE RATED CONSTRUCTIONS INFORMATION.
- H. SEE SHEET 6011 TO 6014 FOR GENERAL ACCESSIBLE REQUIREMENTS.
- J. SEE SHEET A501 FOR WALL TYPES & SHEET A502 TO A504 FOR FIRE RATED ASSEMBLY DETAILS.
- K. PROVIDE 8" LONG CORNER GUARDS @ ALL OUTSIDE CORNER WALL CONDITIONS. VERIFY COLOR W/ INTERIOR DESIGNER.

KEYNOTES

- 1. PFC UNIT (TYP).
- 2. LINE OF PATIO COVER ABOVE.
- 3. LINE OF SANITARY ABOVE.
- 4. RAISED CONG. FLOOR W/ TRENCH DRAIN TO ACCOMMODATE FOR THREE DRYERS (1 FUTURE) & TWO WASHERS.
- 5. RECESSED PORTABLE FIRE EXTINGUISHER CABINET (TYP). SEE SPECS. ADDITIONAL FIRE EXTINGUISHERS MAY BE REQUIRED BY FIRE MARSHALL.
- 6. LAUNDRY CHUTE PER NFPA 62.
- 7. GLASS AUTOMATIC SLIDING MAIN ENTRANCE DOORS.
- 8. STL. COL. PER STRUCT. DWGS.
- 9. BREAKFAST BAR, PER BRAND STANDARDS.
- 10. COFFEE/CONDIMENTS BAR, PER BRAND STANDARDS.
- 11. ROOF DRAIN & OVERFLOW DRAIN LEADERS, CONCEALED IN WALL & DAYLIGHT AT GRADE. PROVIDE SPLASH BLOCKS AS REQUIRED.
- 12. ALIGN FACE OF GYP BD/WALLS - ADD EXTRA LAYER(S) OF GYP BD AS REQUIRED.
- 13. PORTE COCHERE ABOVE, SEE SHEET A502.
- 14. TURN DRAIN PIPES ABOVE THE CEILING INTO HALL CAVITY AS REQUIRED.
- 15. ADD EXTRA ONE LAYER OF 5/8" THK GYP BD ON BOTH SIDES OF THIS WALL FOR HIGHER STC RATING.
- 16. CABINET W/ COUNTERTOP & UPPER CABINET.
- 17. EDGE OF PATIO AS OCCURS.
- 18. ALIGN FACE OF FIRE RATED ASSEMBLY @ STL. COLUMN W/ FACE OF STUD - TYP.
- 19. RUN ROOF DRAIN & OVERFLOW DRAIN UNDER PATIO, SEE CIVIL DWGS.
- 20. CONT. RESILIENT CHANNEL TO THE ENTIRE HALL LENGTH.
- 21. HOLD FACE OF GYP BD TIGHT AGAINST WALL STUD FRAMING.



SECOND FLOOR PLAN
SCALE: 1/8" = 1'-0"

GENERAL NOTES

- A. GRIDS & DIMENSING WALLS ARE TO THE CENTERLINE OF 2x6 STUDS (LOAD BEARING WALLS), UNO. GRIDS & EXTERIOR PERIMETER WALLS ARE TO THE OUTSIDE FACE OF 2x6 STUDS, UNO.
- B. DIMENSIONS ARE TO THE FACE OF STUDS, UNO.
- C. EDGE OF CONC SLAB AT EXTERIOR WALL SHALL BE EXTENDED BEYOND FACE OF STUDS & COMPENSATED FOR THE THICKNESS OF EXTERIOR SHEATHING MATERIAL. SEE WALL SECTIONS, GSN & STRUCT DWGS.
- D. GRIDS & DIMENSIONS ARE TO CENTERLINE OF STL COLUMN, UNO.
- E. SEE ENLARGED PLANS FOR ADDITIONAL INFORMATION NOT SHOWN HERE.
- F. SEE SHEET 6002 FOR GUEST ROOMS MATRIX, SYMBOLS & ABBREVIATIONS.
- G. SEE SHEET 6003 FOR PROJECT DATA, CODE INFORMATION & FIRE RATED CONSTRUCTIONS INFORMATION.
- H. SEE SHEET 6011 TO 6014 FOR GENERAL ACCESSIBLE REQUIREMENTS.
- J. SEE SHEET A501 FOR WALL TYPES & SHEET A502 TO A504 FOR FIRE RATED ASSEMBLY DETAILS.
- K. PROVIDE 8" LONG CORNER GUARDS @ ALL OUTSIDE CORNER WALL CONDITIONS. VERIFY COLOR W/ INTERIOR DESIGNER.

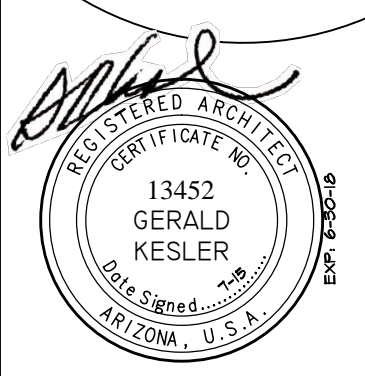
GENERAL NOTES @ ROOF

- a. TYPICAL ROOF SLOPES TO BE @ 1/2" PER FT MIN. THROUGHOUT.
- b. CRICKET DIMENSIONS SHOWN HERE ARE MINIMUM. ADJUST CRICKET SIZES AS APPROPRIATE TO MAINTAIN ALL CRICKET SLOPES @ 1/2" PER FT. MIN.
- c. MAINTAIN ALL CROSS SLOPES @ 1/8" PER FT. MIN.
- d. SEE GENERAL NOTES G, H & J ON SHEET A111-4 FOR R.D. & O.D. PIPES CONCEALMENTS.

KEYNOTES

1. PFC UNIT (TYP).
2. LINE OF MTL OVERHANG ABOVE.
3. LINE OF PATIO COVER BELOW.
4. LINE OF CANOPY BELOW - SLOPED ROOF TOWARD THE EAST TO DRAIN W/ CRICKET AS NECESSARY.
5. RECESSED PORTABLE FIRE EXTINGUISHER CABINET (TYP), SEE SPECS. ADDITIONAL FIRE EXTINGUISHERS MAY BE REQUIRED BY FIRE MARSHALL.
6. LAUNDRY CHUTE PER NFPA 82.
7. PORTE COCHERE & VESTIBULE ROOF BELOW, SEE SHEET A302.
8. ENCLOSED, NO ACCESS SPACE.
9. ALIGN FACE OF GYP SD WALLS - ADD EXTRA LAYER(S) OF GYP SD AS REQUIRED.
10. TURN DRAIN PIPES BELOW THE CEILING INTO WALL CAVITY BELOW AS REQUIRED.
11. ROOF DRAIN & OVERFLOW DRAIN LEADERS, CONCEALED IN WALL.
12. SPRAYED P.U. FOAM ROOF - CONTINUE FOAM UP TO THE BACK SIDE OF PARAPET WALL TO U/S OF FLASHING AT EIFS PARAPET CAP.
13. EIFS PARAPET CAP.
14. FLOOR SINK, SEE PLUMB DWGS.
15. CONT. RESILIENT CHANNEL TO THE ENTIRE WALL LENGTH.
16. HOLD FACE OF GYP SD TIGHT AGAINST WALL STUD FRAMING - TYP @ ALL FLOORS.

GERALD R. KESLER, INC.
ARCHITECTS
1823 E. DRAWT LANE
PHOENIX, AZ 85024
PHONE: 602-721-1083
FAX: 602-606-2100
EMAIL: GK@GKARCH.COM

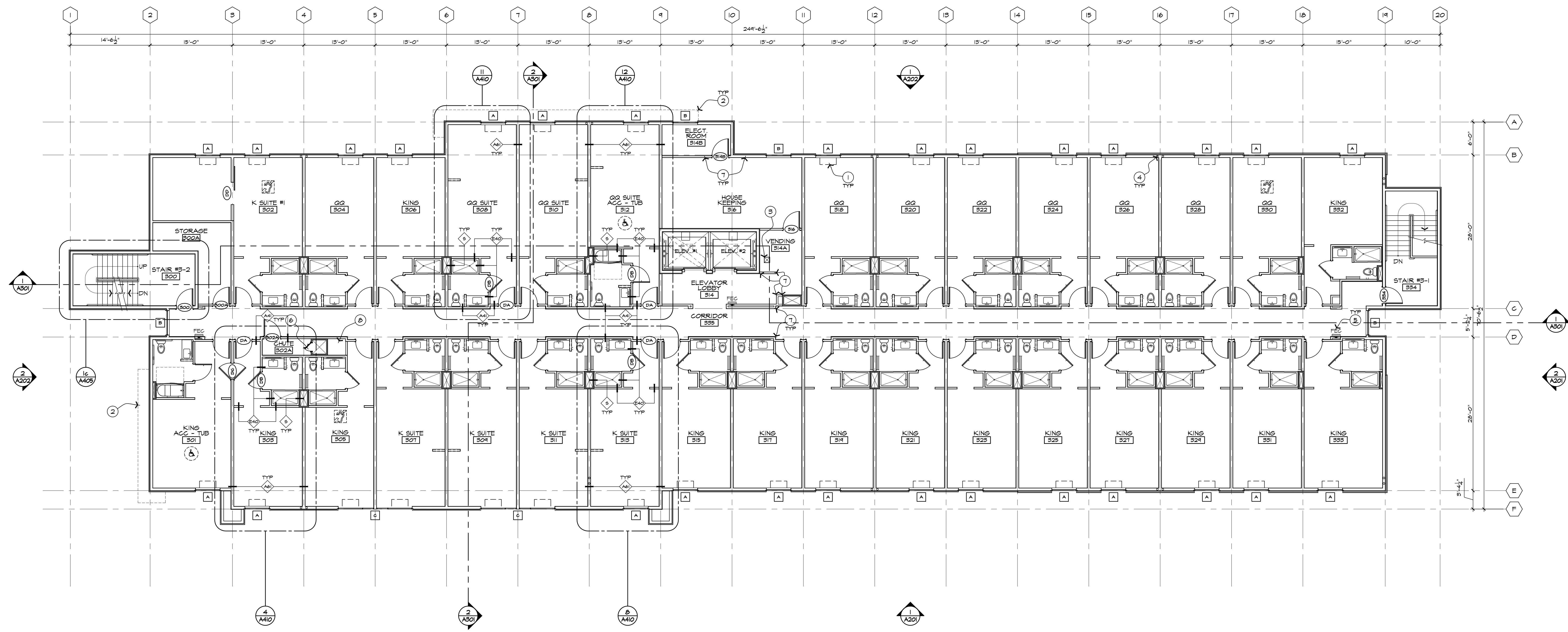


INN CODE # 16111-PHACT
1170 S. ARIZONA AVE.
CHANDLER, ARIZONA, 85226



JOB NUMBER
1401
DATE
07-24-2015
REVISION

SHEET TITLE
SECOND FLOOR PLAN
SHEET NUMBER
A102



THIRD FLOOR PLAN
SCALE: 1/8" = 1'-0"

GENERAL NOTES

- A. GRIDS # DIMENSING WALLS ARE TO THE CENTERLINE OF 2x6 STUDS (LOAD BEARING WALLS), UNO. GRIDS # EXTERIOR PERIMETER WALLS ARE TO THE OUTSIDE FACE OF 2x6 STUDS, UNO.
- B. DIMENSIONS ARE TO THE FACE OF STUDS, UNO.
- C. EDGE OF CONG SLAB AT EXTERIOR WALL SHALL BE EXTENDED BEYOND FACE OF STUDS # COMPENSATED FOR THE THICKNESS OF EXTERIOR SHEATHING MATERIAL. SEE WALL SECTIONS, GSN # STRUCT DINGS.
- D. GRIDS # DIMENSIONS ARE TO CENTERLINE OF STL COLUMN, UNO.
- E. SEE ENLARGED PLANS FOR ADDITIONAL INFORMATION NOT SHOWN HERE.
- F. SEE SHEET 0002 FOR GUEST ROOMS MATRIX, SYMBOLS # ABBREVIATIONS.
- G. SEE SHEET 0003 FOR PROJECT DATA, CODE INFORMATION # FIRE RATED CONSTRUCTIONS INFORMATION.
- H. SEE SHEET 601 TO 604 FOR GENERAL ACCESSIBLE REQUIREMENTS.
- J. SEE SHEET A501 FOR WALL TYPES # SHEET A502 TO A504 FOR FIRE RATED ASSEMBLY DETAILS.
- K. PROVIDE 8" LONG CORNER GUARDS # ALL OUTSIDE CORNER WALL CONDITIONS, VERIFY COLOR W/ INTERIOR DESIGNER.

KEYNOTES

- 1. PTAC UNIT (TYP).
- 2. LINE OF MTL OVERHANG ABOVE.
- 3. FLOOR SINK, SEE PLUMB DWGS.
- 4. ROOF DRAIN # OVERFLOH DRAIN LEADERS, CONCEALED IN WALL.
- 5. RECESSED PORTABLE FIRE EXTINGUISHER CABINET (TYP), SEE SPECS. ADDITIONAL FIRE EXTINGUISHERS MAY BE REQUIRED BY FIRE MARSHALL.
- 6. LAUNDRY CHUTE PER NFPA 62.
- 7. ALIGN FACE OF GYP BD/HALLS - ADD EXTRA LAYER(S) OF GYP BD AS REQUIRED.
- 8. ENCLOSED, NO ACCESS SPACE.

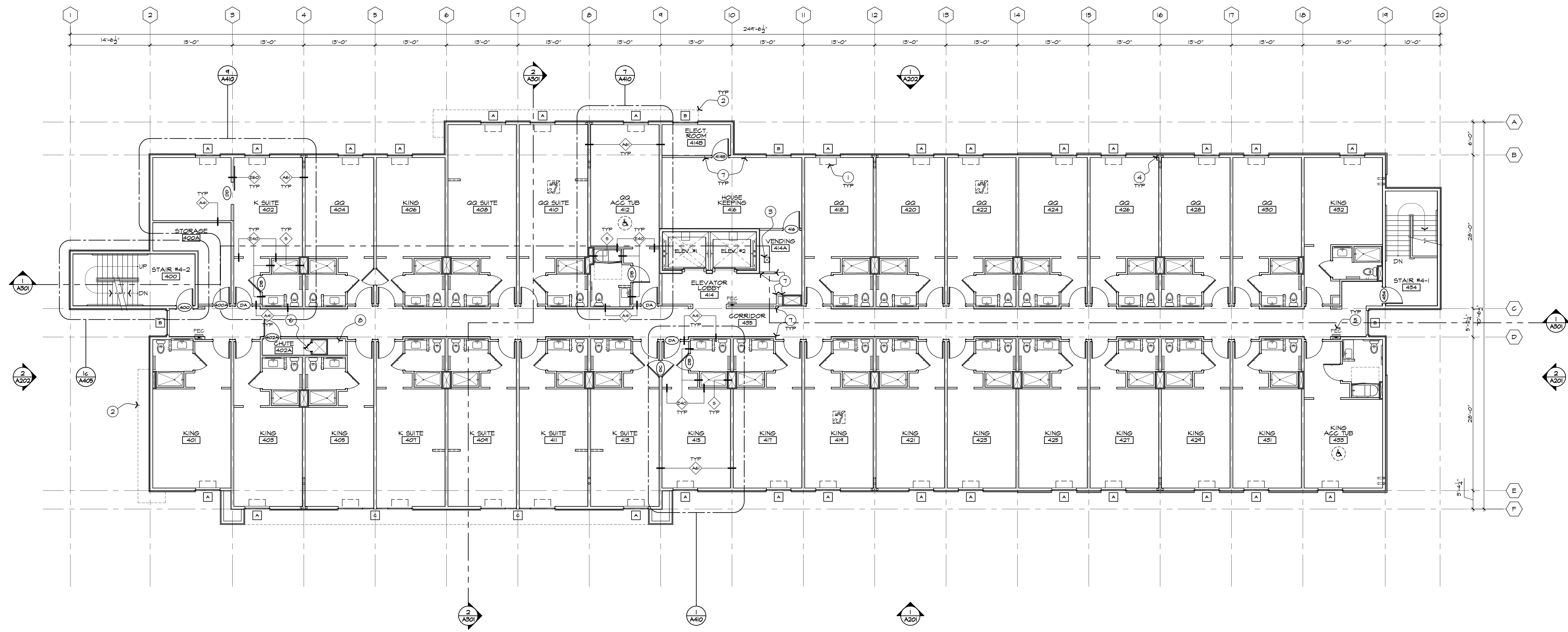
GERALD R. KESLER, INC.
 ARCHITECTS
 1823 E. DRAVET LANE
 PHOENIX, AZ 85024
 PHONE: 602-721-1083
 FAX: 602-955-1100
 EMAIL: GK@GKRI.COM

INN CODE # 16111-PHACT
 1110 S. ARIZONA AVE.
 CHANDLER, ARIZONA, 85226



JOB NUMBER
 1401
 DATE
 07-24-2015
 REVISION

SHEET TITLE
 THIRD FLOOR PLAN
 SHEET NUMBER
A103



FOURTH FLOOR PLAN
SCALE: 1/8" = 1'-0"

GENERAL NOTES

- A. GRIDS # DENISING WALLS ARE TO THE CENTERLINE OF 2x6 STUDS (LOAD BEARING WALLS), UNO. GRIDS # EXTERIOR PERIMETER WALLS ARE TO THE OUTSIDE FACE OF 2x6 STUDS, UNO.
- B. DIMENSIONS ARE TO THE FACE OF STUDS, UNO.
- C. EDGE OF CONC SLAB AT EXTERIOR WALL SHALL BE EXTENDED BEYOND FACE OF STUDS # COMPENSATED FOR THE THICKNESS OF EXTERIOR SHEATHING MATERIAL. SEE WALL SECTIONS, GSN # STRUCT DINGS.
- D. GRIDS # DIMENSIONS ARE TO CENTERLINE OF STL COLUMN, UNO.
- E. SEE ENLARGED PLANS FOR ADDITIONAL INFORMATION NOT SHOWN HERE.
- F. SEE SHEET 6002 FOR GUEST ROOMS MATRIX, SYMBOLS # ABBREVIATIONS.
- G. SEE SHEET 6003 FOR PROJECT DATA, CODE INFORMATION # FIRE RATED CONSTRUCTIONS INFORMATION.
- H. SEE SHEET 6011 TO 6014 FOR GENERAL ACCESSIBLE REQUIREMENTS.
- J. SEE SHEET A501 FOR WALL TYPES # SHEET A502 TO A504 FOR FIRE RATED ASSEMBLY DETAILS.
- K. PROVIDE # LONG CORNER GUARDS # ALL OUTSIDE CORNER WALL CONDITIONS, VERIFY COLOR W/ INTERIOR DESIGNER.

KEYNOTES

- 1. PTAC UNIT (TYP).
- 2. LINE OF MTL OVERHANG ABOVE.
- 3. FLOOR SINK, SEE PLUMB 2465.
- 4. ROOF DRAIN # OVERFLOH DRAIN LEADERS, CONCEALED IN WALL.
- 5. RECESSED PORTABLE FIRE EXTINGUISHER CABINET (TYP), SEE SPECS. ADDITIONAL FIRE EXTINGUISHERS MAY BE REQUIRED BY FIRE MARSHALL.
- 6. LAUNDRY CHUTE PER NFPA 62.
- 7. ALIGN FACE OF GYP BD/HALLS - ADD EXTRA LAYER(S) OF GYP BD AS REQUIRED.
- 8. ENCLOSED, NO ACCESS SPACE.

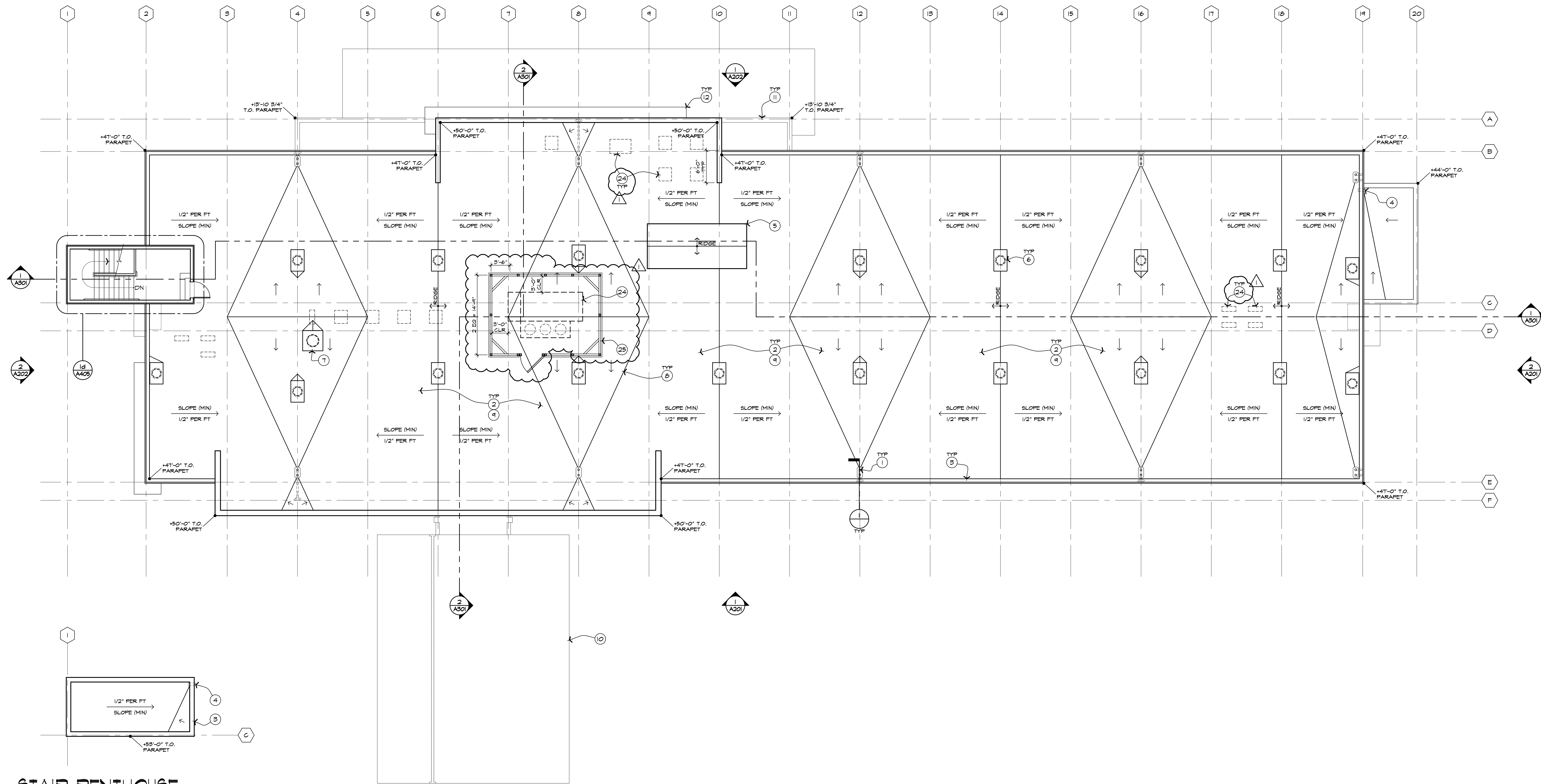
GERALD R. KESLER, INC.
 ARCHITECTS
 1823 E. DRAVET LANE
 PHOENIX, AZ 85042
 PHONE: 602-721-1083
 FAX: 602-955-1100
 EMAIL: GK@GKRI.COM

INN CODE # 16111-PHXCT
 1110 S. ARIZONA AVE.
 CHANDLER, ARIZONA, 85226

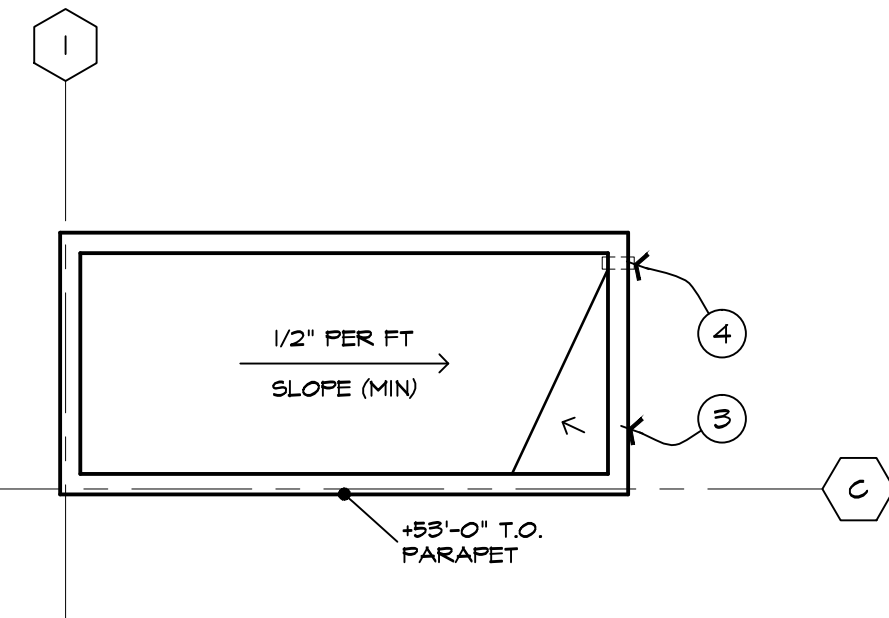


JOB NUMBER	1401
DATE	07-24-2015
REVISION	

SHEET TITLE
 FOURTH FLOOR PLAN
 SHEET NUMBER
A104



**STAIR PENTHOUSE
ROOF PLAN**



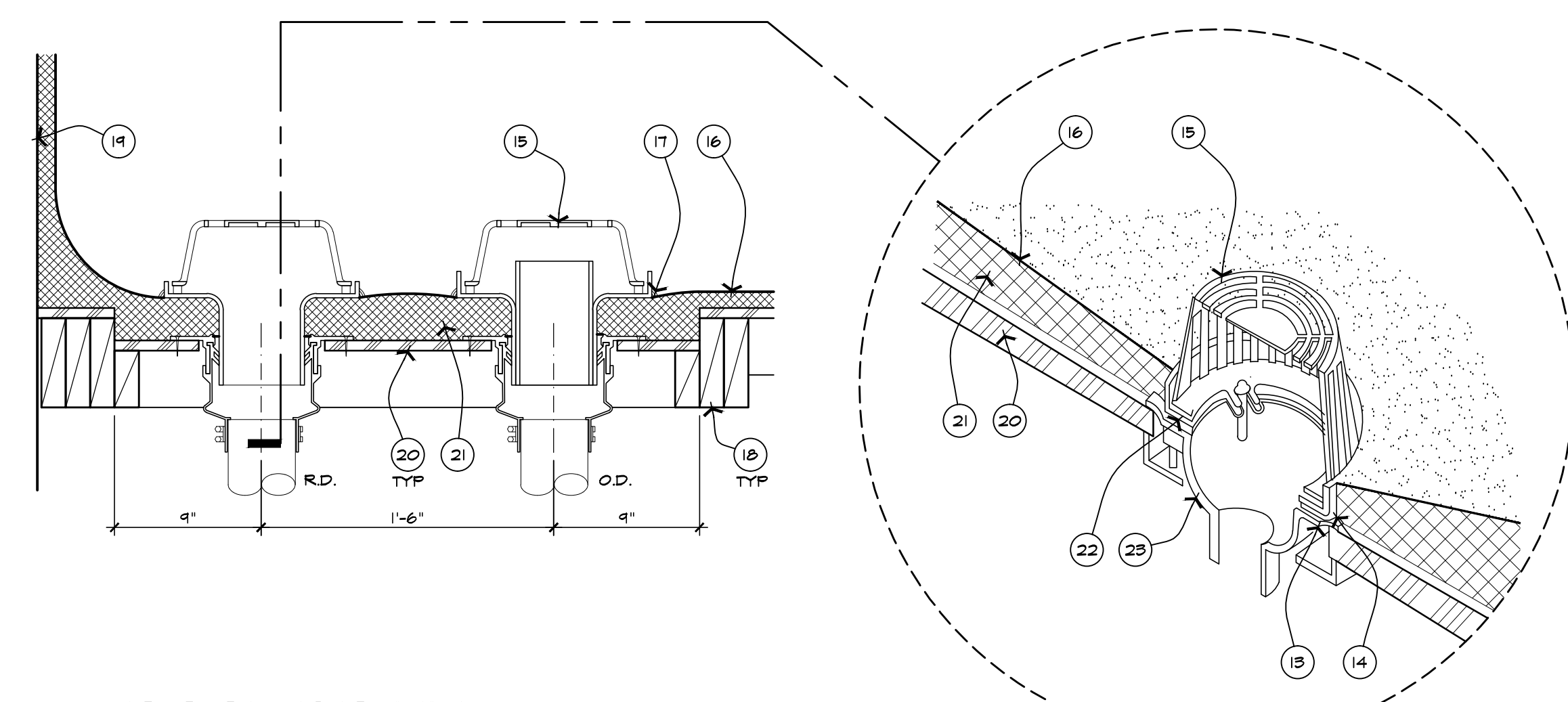
ROOF PLAN
SCALE: 1/8" = 1'-0"

GENERAL NOTES

- A. TYPICAL ROOF SLOPES TO BE @ 1/2" PER FT MIN. THROUGHOUT.
- B. CRICKET DIMENSIONS SHOWN HERE ARE MINIMUM. ADJUST CRICKET SIZES AS APPROPRIATE TO MAINTAIN ALL CRICKET SLOPES @ 1/2" PER FT. MIN.
- C. MAINTAIN ALL CROSS SLOPES @ 1/2" PER FT. MIN.
- D. DIMENSIONS AT PARAPET KING WALLS ARE FROM TO EIFS WALL FINISH FACES, U.N.O.
- E. SEE MECH. DWGS FOR ALL MECHANICAL PLANS, LAYOUTS & OTHER RELATED INFORMATION.
- F. GUARDS SHALL BE PROVIDED WHERE APPLIANCES, EQUIPMENT, FANS, OR OTHER COMPONENTS THAT REQUIRE SERVICE ARE LOCATED WITHIN 10 FT. OF A ROOF EDGE OR OPEN SIDE OF A WALKING SURFACE AND SUCH EDGE OR OPEN SIDE IS LOCATED MORE THAN 30" ABOVE THE FLOOR, ROOF OR GRADE BELOW. THE GUARD SHALL EXTEND NOT LESS THAN 30" BEYOND EACH END OF SUCH OBJECTS AND THE TOP OF THE GUARD SHALL BE LOCATED NOT LESS THAN 42" ABOVE THE ELEVATED SURFACE ADJACENT TO THE GUARD. THE GUARD SHALL BE CONSTRUCTED SO AS TO PREVENT THE PASSAGE OF A 2" DIA SPHERE AND SHALL COMPLY W/ THE REQUIREMENTS OF THE IBC. SEE GENERAL NOTES G, H & I ON SHEET A111-4 FOR R.D. & O.D. PIPE CONCEALMENTS.
- G. MECHANICAL EQUIPMENT:
 - 1. ALL ROOF MOUNTED MECHANICAL EQUIPMENT SHALL BE FULLY SCREENED BY PARAPET WALLS EQUAL TO, OR GREATER THAN, THE HIGHEST POINT ON THE MECHANICAL EQUIPMENT.
 - 2. ALL GROUND MOUNTED MECHANICAL EQUIPMENT SHALL BE SCREENED BY SOLID MASONRY WALLS AND GATES EQUAL TO, OR GREATER THAN, THE HIGHEST POINT ON THE MECHANICAL EQUIPMENT.
 - 3. SIGNS REQUIRE SEPARATE PERMIT.

KEYNOTES

- 1. ROOF & OVERFLOW DRAIN W/ STRAINER.
- 2. SPRAYED F.U. FOAM ROOF - CONTINUE FOAM UP TO THE BACK SIDE OF PARAPET WALL TO US OF FLASHING AT EIFS PARAPET GAP.
- 3. EIFS PARAPET GAP.
- 4. GALV. MTL. SCUPPER THRU PARAPET WALL W/ CONC. SPLASH BLOCK AS REQUIRED.
- 5. ELEVATOR PENTHOUSE.
- 6. EXHAUST DUCT HOUSING (TYP).
- 7. LAUNDRY CHUTE VENT HOUSING.
- 8. PLYWOOD CRICKET.
- 9. PROVIDE WALKMATS OVER ROOF SYSTEM TO ALL MECH. EQUIPMENT.
- 10. PORTE COCHERE BELOW SEE DETAILS SHEET A502.
- 11. LINE OF ROOF BELOW, SEE SHEET A102.
- 12. LINE OF MTL OVERHANG BELOW.
- 13. INSTALL SEALANT UNDER CLAMPING RING BEFORE SECURING BOWL.
- 14. SPRAYED F.U. FOAM AT CLAMPING RING.
- 15. DRAIN STRAINER, OVERFLOW ROOF DRAIN TO HAVE EXTERIOR WATER DAM.
- 16. ELASTOMERIC COATINGS.
- 17. CONTINUOUS SEALANT ALL AROUND.
- 18. 2X BLOCKING BETWEEN ROOF TRUSSES.
- 19. LINE OF PARAPET.
- 20. ROOF SHEATHING.
- 21. TAPER FOAM TO ROOF/OVERFLOW DRAIN AS REQUIRED.
- 22. CLAMPING RING.
- 23. DRAIN BOWL.
- 24. MECH ROOFTOP UNIT SHOWN HIDDEN.
- 25. MECH SCREENING ENCLOSURE @ THE CSA UNIT - HORIZONTALLY INSTALLED B-DECK O/ STL. POSTS W/ DIAGONALLY BRACED AT TOP & PAINTED TO MATCH ADJACENT COLOR - MAINTAIN 3'-0" CLR FROM THE UNIT @ ALL SIDES. PROVIDE 4'-0" WIDE X FULL HEIGHT B-DECK O/ STL. FRAMING SKING GATE TO MATCH.



**ROOF DRAIN &
OVERFLOW DRAIN DTL.**
SCALE: 1/2" = 1'-0"

PHONE: 480.752.1083
FAX: 480.606.2180
EMAIL: GKR@GKR.COM

GERALD R. KESLER, INC.
ARCHITECTS
1823 E. DUBUQUE LANE
PHOENIX, AZ 85024

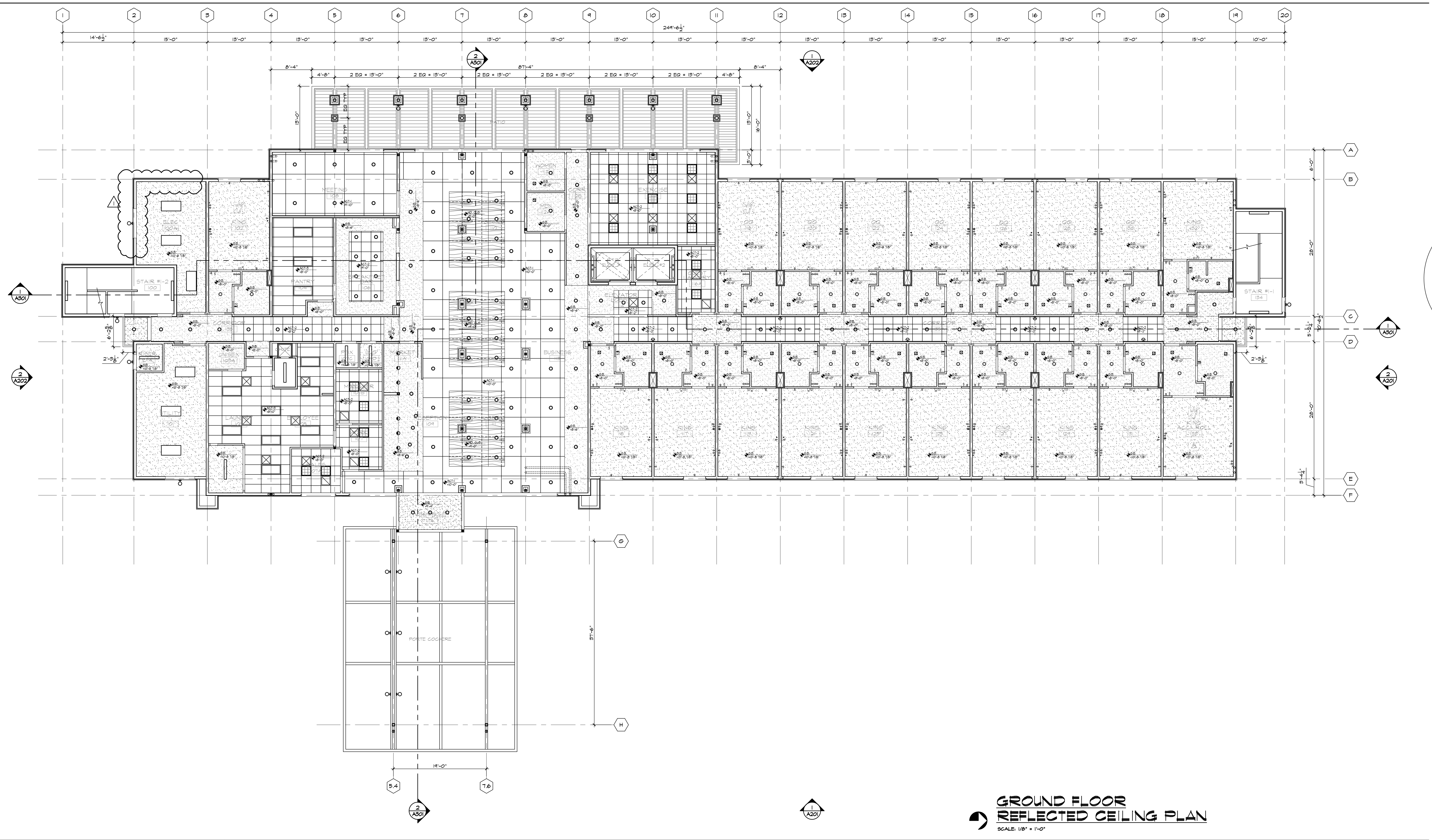
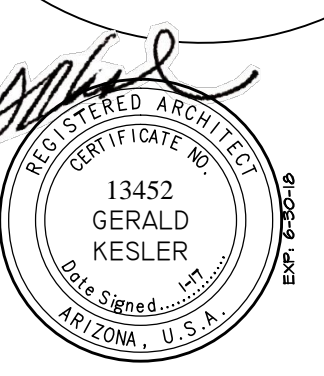


INN CODE # 16111-PHACT
1110 S. ARIZONA AVE.
CHANDLER, ARIZONA, 85226



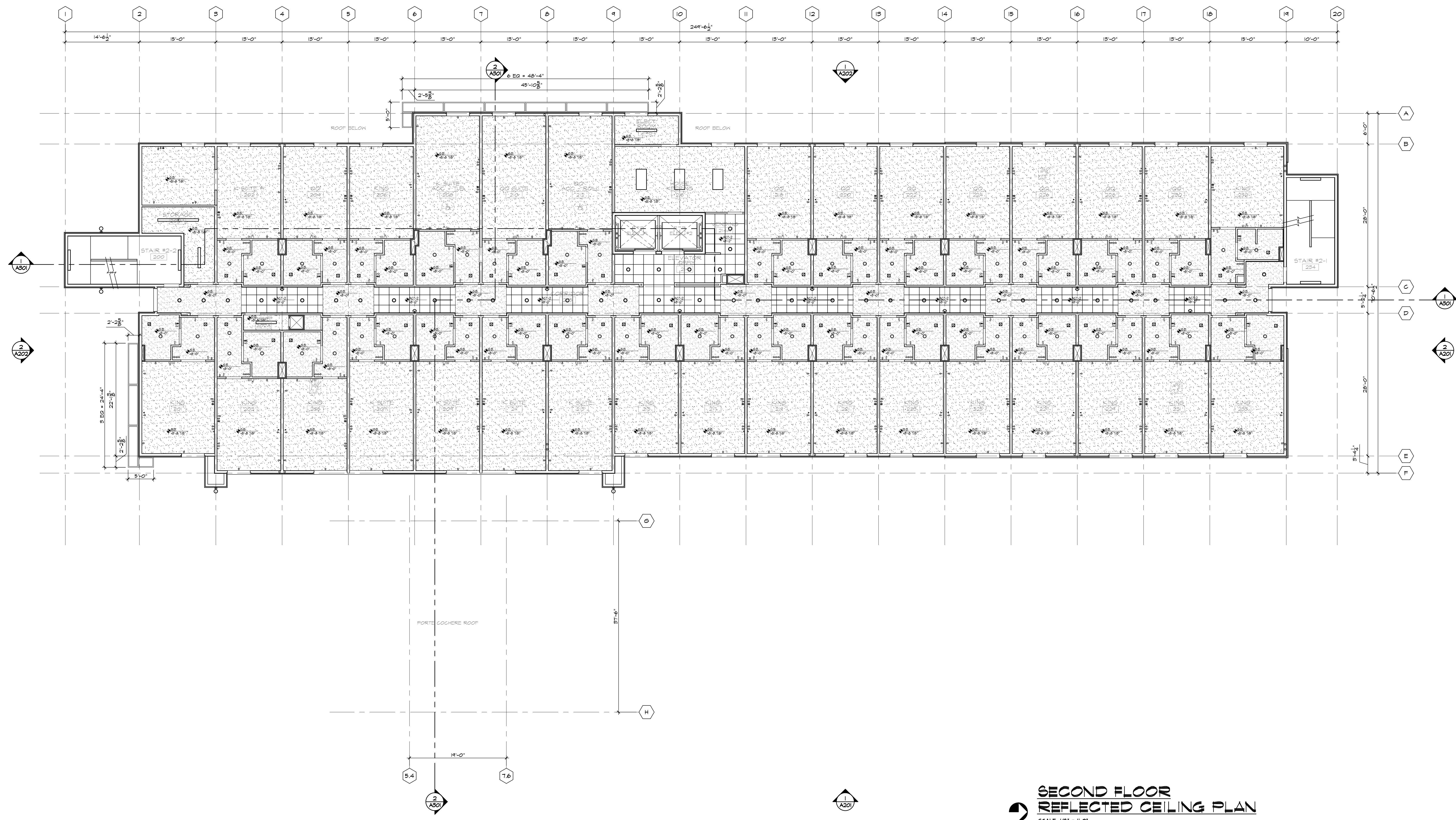
JOB NUMBER
1401
DATE
07-24-2015
REVISION
1st City Comments
09-11-2015

SHEET TITLE
ROOF PLAN
SHEET NUMBER
A105



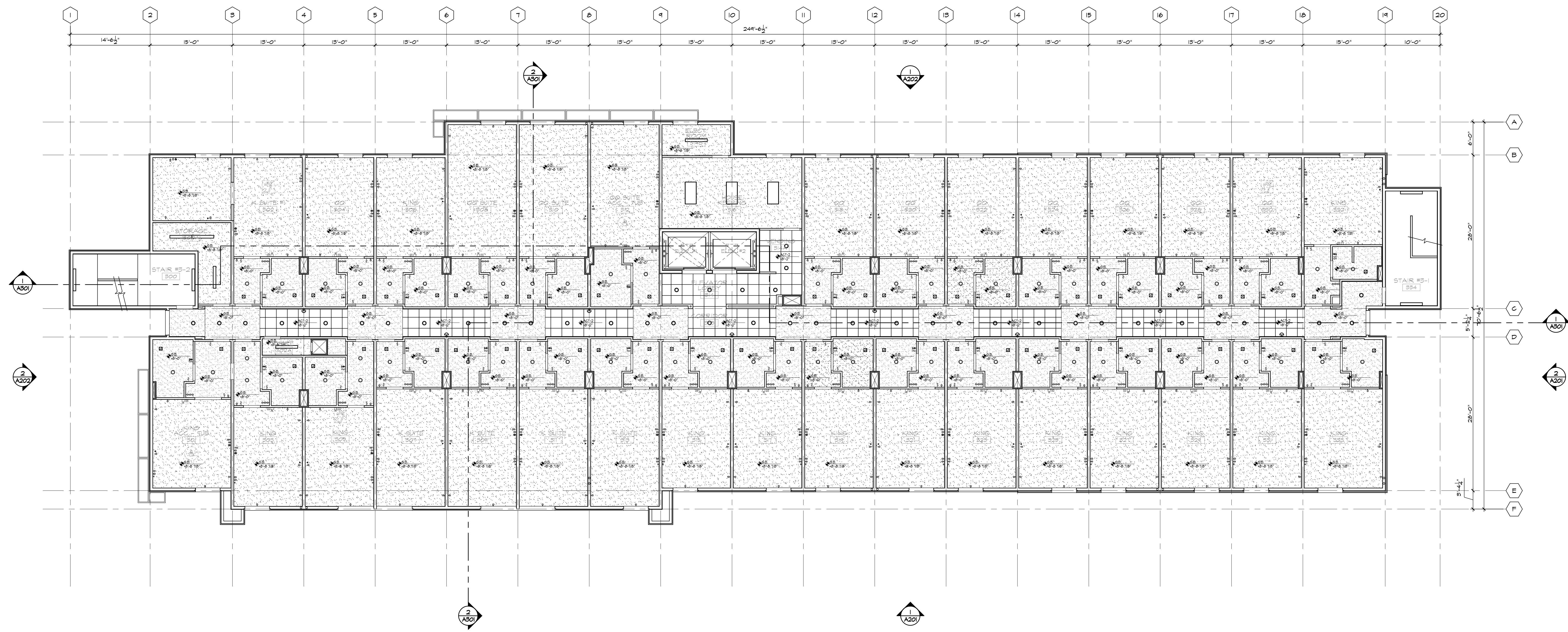
GROUND FLOOR REFLECTED CEILING PLAN
 SCALE: 1/8" = 1'-0"

LEGEND	CEILING LEGEND	GENERAL NOTES
<ul style="list-style-type: none"> STEPS IN SOFFIT/CEILING RECESSED DOWNLIGHT 2' x 2' PARABOLIC FLUORESCENT LIGHT FIXTURE IN 2' x 2' SUSPENDED CEILING GRID SYSTEM 2' x 4' FLUORESCENT LIGHT FIXTURE IN 2' x 4' SUSPENDED CEILING GRID SYSTEM 2' x 4' SURFACED MOUNTED FLUORESCENT LIGHT FIXTURE 1' x 4' SURFACED MOUNTED FLUORESCENT LIGHT FIXTURE INTERIOR SCONCE LIGHT FIXTURE WALL WASHER GROUND MOUNTED UP-LIGHTING FIXTURE EXTERIOR UP AND/OR DOWN-LIGHTING FIXTURE SUPPLY AIR GRILLE, SEE MECH. DWGS. RETURN AIR GRILLE, SEE MECH. DWGS. SUPPLY AIR GRILLE @ GUEST ROOMS, SEE MECH. DWGS. EXHAUST FAN, SEE MECH. DWGS. 	<ul style="list-style-type: none"> SUSPENDED HOOD PANEL CEILING, HEIGHT AS INDICATED 4' x 4' ACOUSTICAL CEILING TILES, HEIGHT AS INDICATED 2' x 2' ACOUSTICAL CEILING TILES, HEIGHT AS INDICATED 2' x 4' ACOUSTICAL CEILING TILES, HEIGHT AS INDICATED 2' x 2' SUSPENDED CEILING GRID SYSTEM 2' x 4' SUSPENDED CEILING GRID SYSTEM 4' x 4' SUSPENDED CEILING GRID SYSTEM 	<p>A. PROVIDE EMERGENCY LIGHTING & SMOKE DETECTION SYSTEM IN ALL PUBLIC AREAS, ALL AREAS WHERE STAFF WILL PERFORM A DUTY AND AS REQUIRED BY LOCAL CODE AND LIFE SAFETY STANDARDS.</p> <p>B. DIMENSIONS IN REFL. CLG PLAN ARE FROM / TO THE FINISH SURFACE, U.N.O.</p> <p>C. THE LAYOUT OF ALL SUSPENDED CEILING GRID SYSTEM SHALL BE CENTERED PER PLAN IN EACH ROOM / AREA, U.N.O.</p> <p>D. LIGHT FIXTURE SHALL BE CENTERED IN EACH ROOM / AREA, U.N.O.</p> <p>E. PROVIDE M.R. GYP BD CEILING / SOFFIT AT ALL WET AREAS, GUEST ROOMS BATHROOM, EXTERIOR SOFFIT, U.N.O.</p> <p>F. SEE MECH & ELEC DWGS FOR RELATED INFORMATION.</p> <p>G. RUN & HOLD ALL RD & GD PIPING WITHIN WALL CAVITY & ROOF/CLG/FLOOR ASSEMBLY AS MUCH AS POSSIBLE.</p> <p>H. PROVIDE ADDITIONAL & ADEQUATE GYP BD SOFFIT AS NECESSARY TO CONCEAL THESE PIPES WHERE REQUIRED - MAINTAIN +7-6" MIN CLR HT FROM THE BOTTOM OF THE SOFFIT TO A.P.F. ANY EXPOSED PIPING SHALL NOT BE ALLOWED IN GUEST ROOMS & PUBLIC AREAS.</p> <p>I. VERIFY W/ THE ARCHITECT FOR THE SOFFIT REQUIREMENTS & SIZES AND EXACT LOCATIONS & CLEARANCES OF THE RD & GD PRIOR TO PLACEMENTS & INSTALLATIONS.</p>



**SECOND FLOOR
 REFLECTED CEILING PLAN**
 SCALE: 1/8" = 1'-0"

LEGEND	CEILING LEGEND	GENERAL NOTES
<ul style="list-style-type: none"> RECESSED DOWNLIGHT 2' x 2' PARABOLIC FLUORESCENT LIGHT FIXTURE IN 2' x 2' SUSPENDED CEILING GRID SYSTEM 2' x 4' FLUORESCENT LIGHT FIXTURE IN 2' x 4' SUSPENDED CEILING GRID SYSTEM 2' x 4' SURFACED MOUNTED FLUORESCENT LIGHT FIXTURE 1' x 4' SURFACED MOUNTED FLUORESCENT LIGHT FIXTURE INTERIOR SCONCE LIGHT FIXTURE WALL WASHER GROUND MOUNTED UP-LIGHTING FIXTURE EXTERIOR UP AND/OR DOWN-LIGHTING FIXTURE SUPPLY AIR GRILLE, SEE MECH. DWGS. RETURN AIR GRILLE, SEE MECH. DWGS. SUPPLY AIR GRILLE @ GUEST ROOMS, SEE MECH. DWGS. EXHAUST FAN, SEE MECH. DWGS. 	<ul style="list-style-type: none"> SUSPENDED HOOD PANEL CEILING, HEIGHT AS INDICATED 4' x 4' ACOUSTICAL CEILING TILES, HEIGHT AS INDICATED 2' x 2' ACOUSTICAL CEILING TILES, HEIGHT AS INDICATED 2' x 4' ACOUSTICAL CEILING TILES, HEIGHT AS INDICATED 2' x 2' SUSPENDED CEILING GRID SYSTEM 2' x 4' SUSPENDED CEILING GRID SYSTEM 4' x 4' SUSPENDED CEILING GRID SYSTEM 	<p>A. PROVIDE EMERGENCY LIGHTING & SMOKE DETECTION SYSTEM IN ALL PUBLIC AREAS, ALL AREAS WHERE STAFF WILL PERFORM A DUTY AND AS REQUIRED BY LOCAL CODE AND LIFE SAFETY STANDARDS.</p> <p>B. DIMENSIONS IN REFL. CLG PLAN ARE FROM / TO THE FINISH SURFACE, UNO.</p> <p>C. THE LAYOUT OF ALL SUSPENDED CEILING GRID SYSTEM SHALL BE CENTERED PER PLAN IN EACH ROOM / AREA, UNO.</p> <p>D. LIGHT FIXTURE SHALL BE CENTERED IN EACH ROOM / AREA, UNO.</p> <p>E. PROVIDE M.R. GYP BD CEILING / SOFFIT AT ALL WET AREAS, GUEST ROOMS BATHROOM, EXTERIOR SOFFIT, UNO.</p> <p>F. SEE MECH & ELEC DWGS FOR RELATED INFORMATION.</p> <p>G. RUN & HOLD ALL RD & OD PIPING WITHIN WALL CAVITY & ROOF/CLG/FLOOR ASSEMBLY AS MUCH AS POSSIBLE.</p> <p>H. PROVIDE ADDITIONAL & ADEQUATE GYP BD SOFFIT AS NECESSARY TO CONCEAL THESE PIPES WHERE REQUIRED - MAINTAIN +7'-6" MIN CLR HT FROM THE BOTTOM OF THE SOFFIT TO A.P.F. ANY EXPOSED PIPING SHALL NOT BE ALLOWED IN GUEST ROOMS & PUBLIC AREAS.</p> <p>I. VERIFY W/ THE ARCHITECT FOR THE SOFFIT REQUIREMENTS & SIZES AND EXACT LOCATIONS & CLEARANCES OF THE RD & OD PRIOR TO PLACEMENTS & INSTALLATIONS.</p>



**THIRD FLOOR
 REFLECTED CEILING PLAN**
 SCALE: 1/8" = 1'-0"

LEGEND	CEILING LEGEND	GENERAL NOTES
<ul style="list-style-type: none"> STEPS IN SOFFIT/CEILING RECESSED DOWNLIGHT 2' x 2' PARABOLIC FLUORESCENT LIGHT FIXTURE IN 2' x 2' SUSPENDED CEILING GRID SYSTEM 2' x 4' FLUORESCENT LIGHT FIXTURE IN 2' x 4' SUSPENDED CEILING GRID SYSTEM 2' x 4' SURFACED MOUNTED FLUORESCENT LIGHT FIXTURE 1' x 4' SURFACED MOUNTED FLUORESCENT LIGHT FIXTURE INTERIOR SCONCE LIGHT FIXTURE WALL WASHER GROUND MOUNTED UP-LIGHTING FIXTURE EXTERIOR UP AND/OR DOWN-LIGHTING FIXTURE SUPPLY AIR GRILLE, SEE MECH. DWGS. RETURN AIR GRILLE, SEE MECH. DWGS. SUPPLY AIR GRILLE @ GUEST ROOMS, SEE MECH. DWGS. EXHAUST FAN, SEE MECH. DWGS. 	<ul style="list-style-type: none"> SUSPENDED HOOD PANEL CEILING, HEIGHT AS INDICATED 4' x 4' ACOUSTICAL CEILING TILES, HEIGHT AS INDICATED 2' x 2' ACOUSTICAL CEILING TILES, HEIGHT AS INDICATED 2' x 4' ACOUSTICAL CEILING TILES, HEIGHT AS INDICATED 2' x 2' SUSPENDED CEILING GRID SYSTEM 2' x 4' SUSPENDED CEILING GRID SYSTEM 4' x 4' SUSPENDED CEILING GRID SYSTEM 	<p>A. PROVIDE EMERGENCY LIGHTING & SMOKE DETECTION SYSTEM IN ALL PUBLIC AREAS, ALL AREAS WHERE STAFF WILL PERFORM A DUTY AND AS REQUIRED BY LOCAL CODE AND LIFE SAFETY STANDARDS.</p> <p>B. DIMENSIONS IN REFL. CLG PLAN ARE FROM / TO THE FINISH SURFACE, U.N.O.</p> <p>C. THE LAYOUT OF ALL SUSPENDED CEILING GRID SYSTEM SHALL BE CENTERED PER PLAN IN EACH ROOM / AREA, U.N.O.</p> <p>D. LIGHT FIXTURE SHALL BE CENTERED IN EACH ROOM / AREA, U.N.O.</p> <p>E. PROVIDE M.R. GYP BD CEILING / SOFFIT AT ALL WET AREAS, GUEST ROOMS BATHROOM, EXTERIOR SOFFIT, U.N.O.</p> <p>F. SEE MECH & ELEC DWGS FOR RELATED INFORMATION.</p> <p>G. RUN & HOLD ALL RD & OD PIPING WITHIN WALL CAVITY & ROOF/CLG/FLOOR ASSEMBLY AS MUCH AS POSSIBLE.</p> <p>H. PROVIDE ADDITIONAL & ADEQUATE GYP BD SOFFIT AS NECESSARY TO CONCEAL THESE PIPES WHERE REQUIRED - MAINTAIN +7-6\"/></p> <p>I. VERIFY W/ THE ARCHITECT FOR THE SOFFIT REQUIREMENTS & SIZES AND EXACT LOCATIONS & CLEARANCES OF THE RD & OD PRIOR TO PLACEMENTS & INSTALLATIONS.</p>